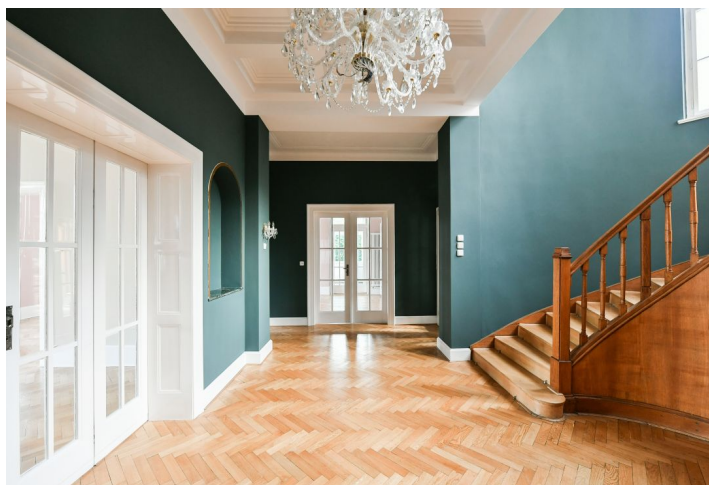




House Nine-bedroom (10+1)

Ask for price

522 m², Prague 6, Dejvice, Na Karlovce





House Nine-bedroom (10+1)

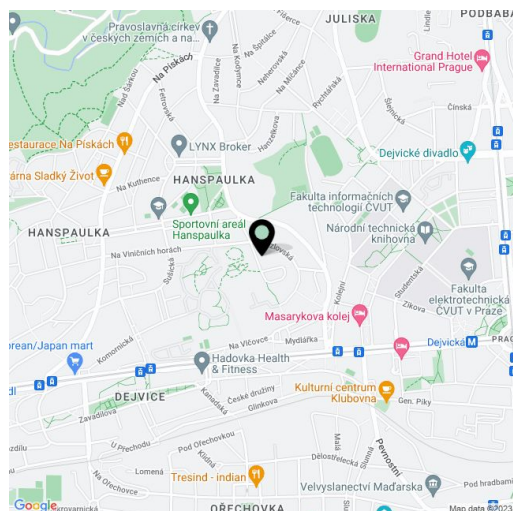
[Ask for price](#)522 m², Prague 6, Dejvice, Na Karlovce

Plot	2 720 m ²
Foot print	263 m ²
Garden	2 457 m ²
Parking	Garage + 4 parking spaces on the plot.
Garage	Yes
Cellar	Yes
Service price	Charges for services and utilities CZK 30,000/month.
PENB	G
Reference number	16817
Available from	Immediately

Amazing villa for rent! This renovated villa with views of Prague Castle, built in 1928, with a garden, is the original family seat of the famous architect Antonin Engel. Situated in the prestigious residential neighborhood of Hanspaulka, with bus, tram, and metro connections.

The ground floor offers an entrance hall with an original wooden staircase and soffit ceiling, 2 living rooms with a fireplace, a kitchen, 2 toilets, and a winter garden with access to the terrace and the outdoor garden. On the first floor is a living room with fully fitted kitchen, 3 bedrooms, 2 bathrooms with a bathtub, toilet, and sink, and a walk-in closet. On the second floor are 2 bedrooms, a kitchen, a bathroom with a bathtub and sink and a separate toilet, and storage space. The basement consists of 4 rooms, a toilet, a small cellar, and a garage.

Preserved original features, wooden staircase, high ceilings, wooden parquet floors and tiles, air-conditioning, satellite, videophone, alarm, camera system, irrigation system in the garden, pergola with outdoor seating. Garden and house maintenance included in the price.

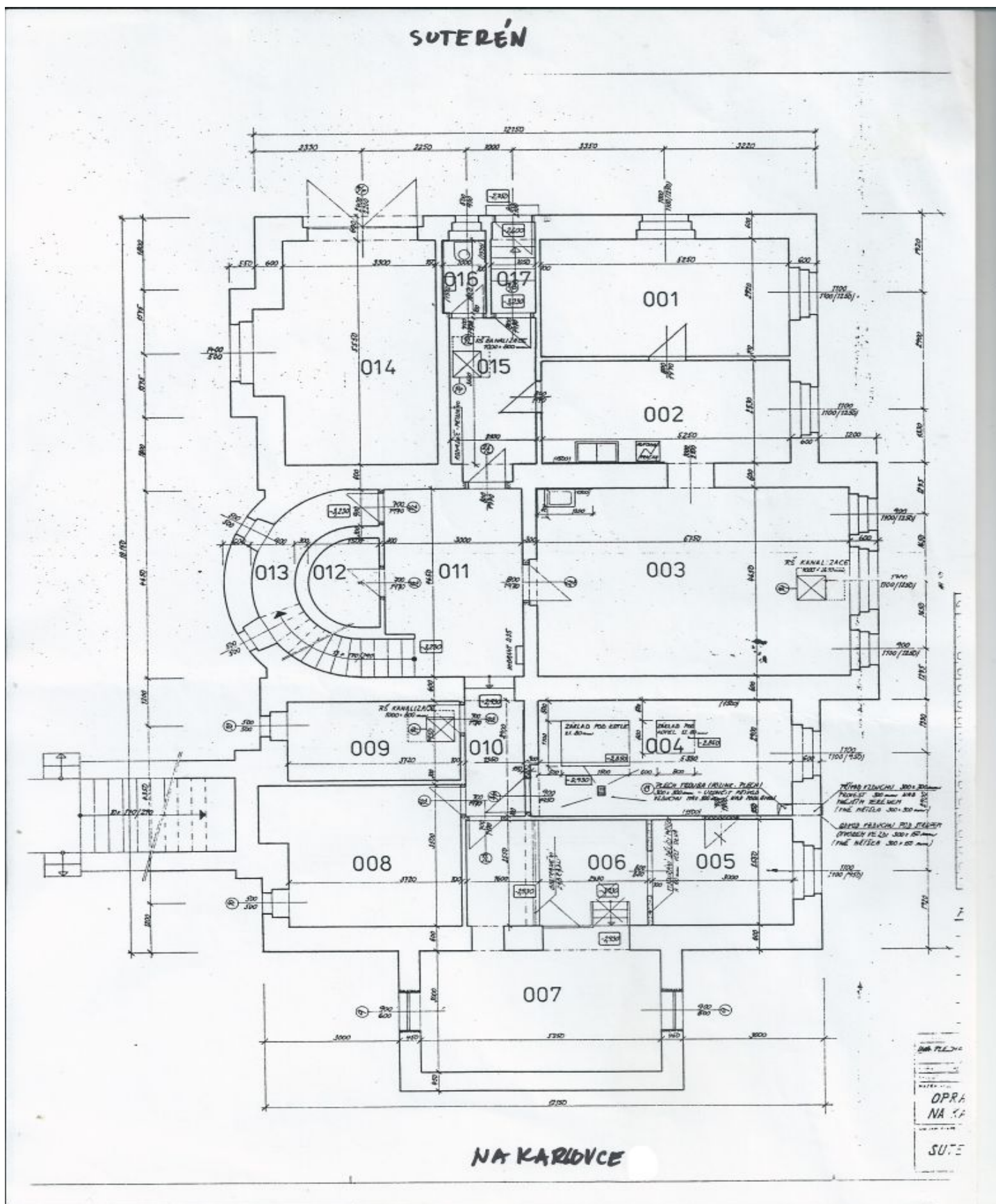




House Nine-bedroom (10+1)

Ask for price

522 m², Prague 6, Dejvice, Na Karlovce

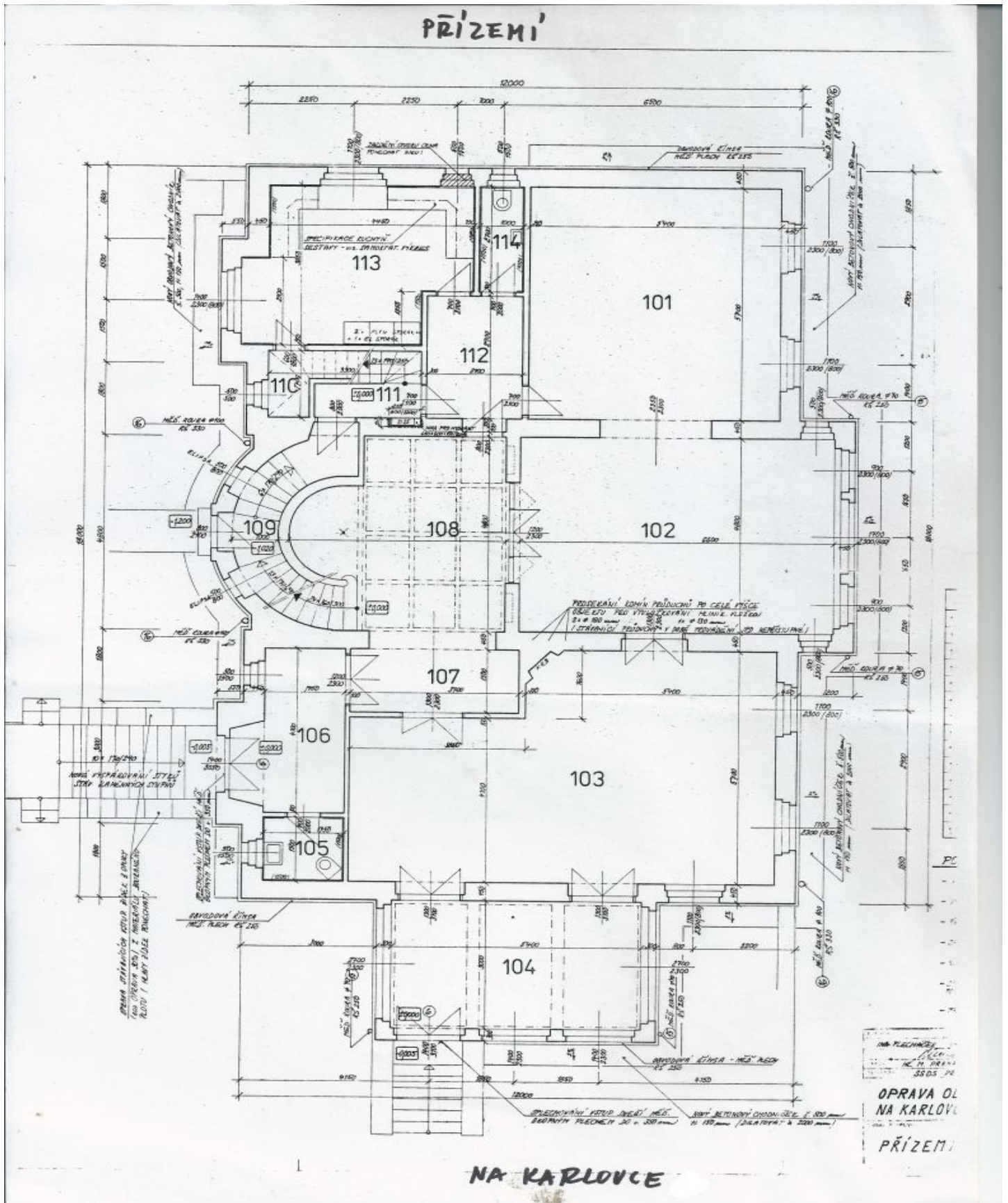




House Nine-bedroom (10+1)

Ask for price

522 m², Prague 6, Dejvice, Na Karlovce

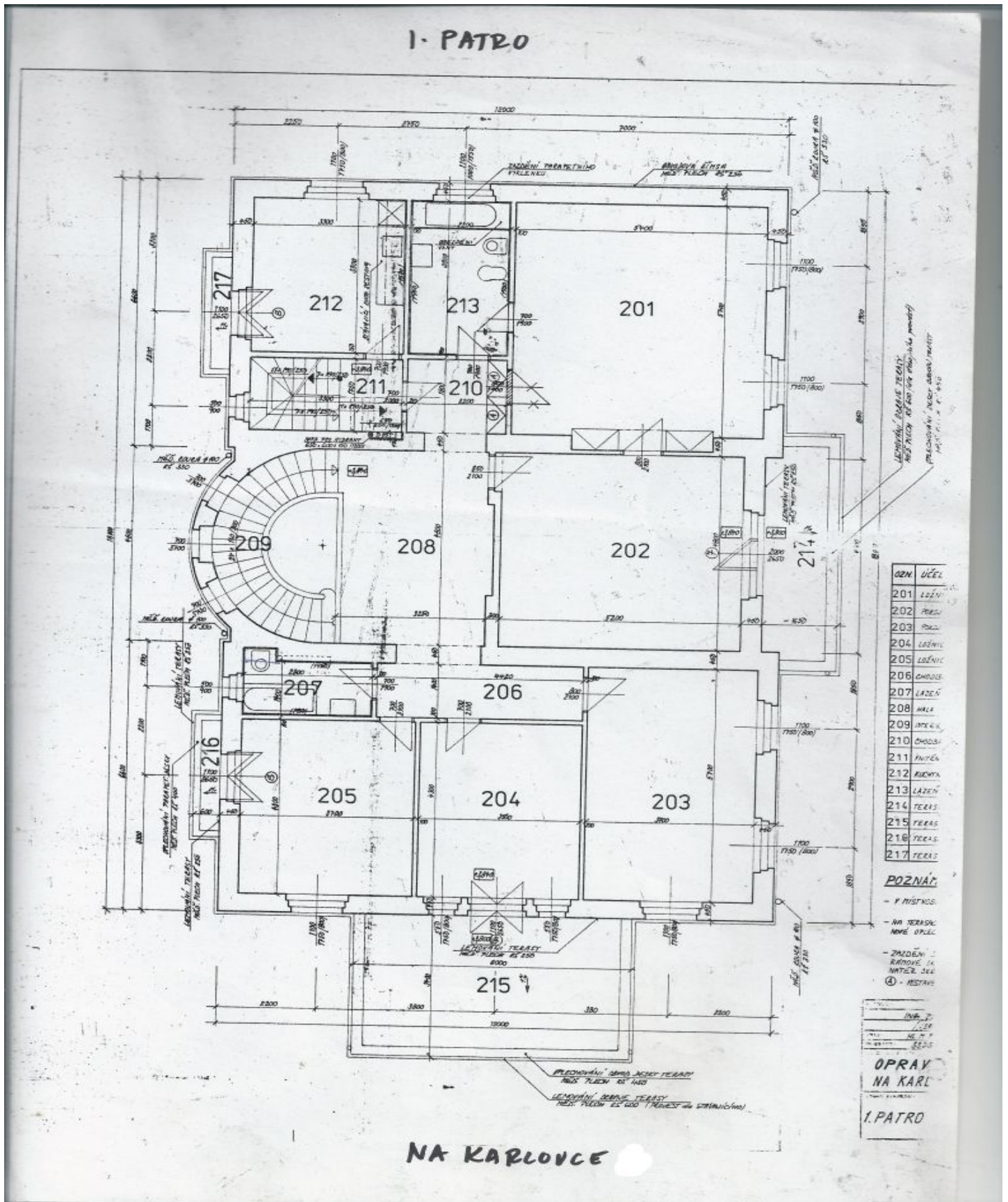




House Nine-bedroom (10+1)

Ask for price

522 m², Prague 6, Dejvice, Na Karlovce





House Nine-bedroom (10+1)

522 m², Prague 6, Dejvice, Na Karlovce

Ask for price

