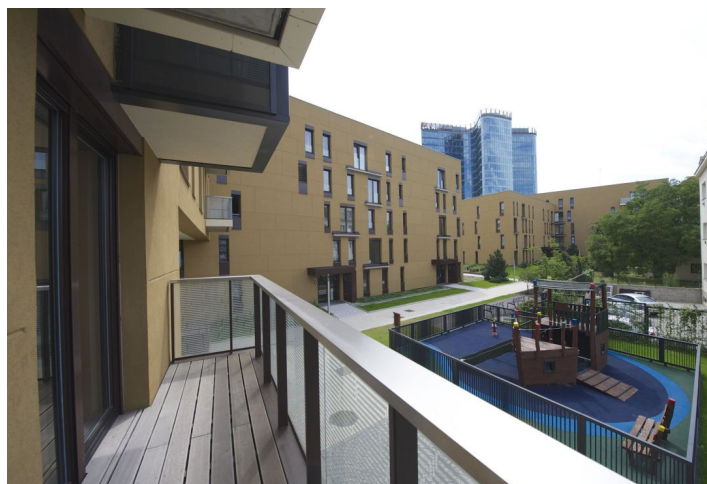




Apartment One-bedroom (2+kk)

€ 999 | CZK 24 690

73 m², Prague 4, Michle, Baarova





Apartment One-bedroom (2+kk)

€ 999 | CZK 24 690

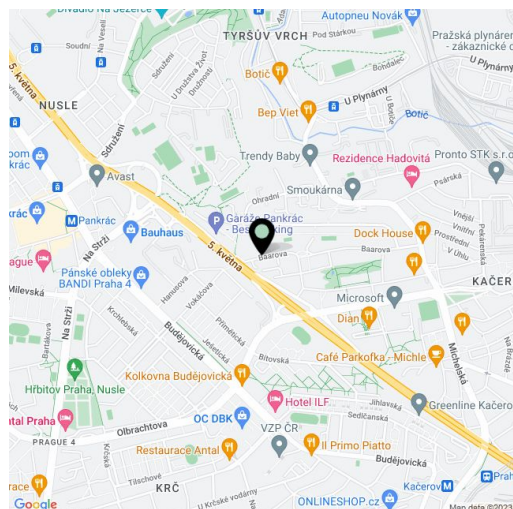
73 m², Prague 4, Michle, Baarova

Total area	82 m²
Floor area*	73 m²
Balcony	9 m²
Parking	Parking available.
Garage	Yes
Cellar	Yes
PENB	G
Reference number	16825
Available from	Immediately

Brand new 1-bedroom flat with 2 balconies situated on the 2nd floor with lift in a new residential development with 24-hour reception, security, new park, children's playground and underground parking. Location with full range of amenities, near the BB Centrum and Brumlovka multipurpose centers, with bus connections to Budějovická and Pankrác metro stations and quick access to the city center.

The interior includes living room with a fully fitted open kitchen, open winter garden and balcony access, one bedroom with a bathroom (bath tub, toilet) and an access to the balcony, guest toilet, laundry room, and entry hall.

Wood floors and tiles, built-in wardrobes, blinds, security door, dishwasher, microwave, audio entry phone. Cellar, chip entry to the building. Parking space available for CZK 2500/month. Monthly deposit for services CZK 6455. Electricity is billed separately. The photos are taken from a similar apartment.



* Area of the unit according to the Civil Code. The area consists of the sum total area of the entire unit bounded by perimeter walls.