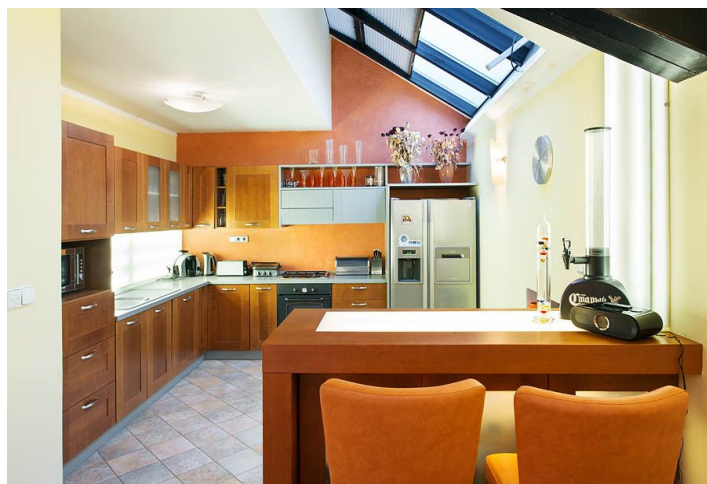
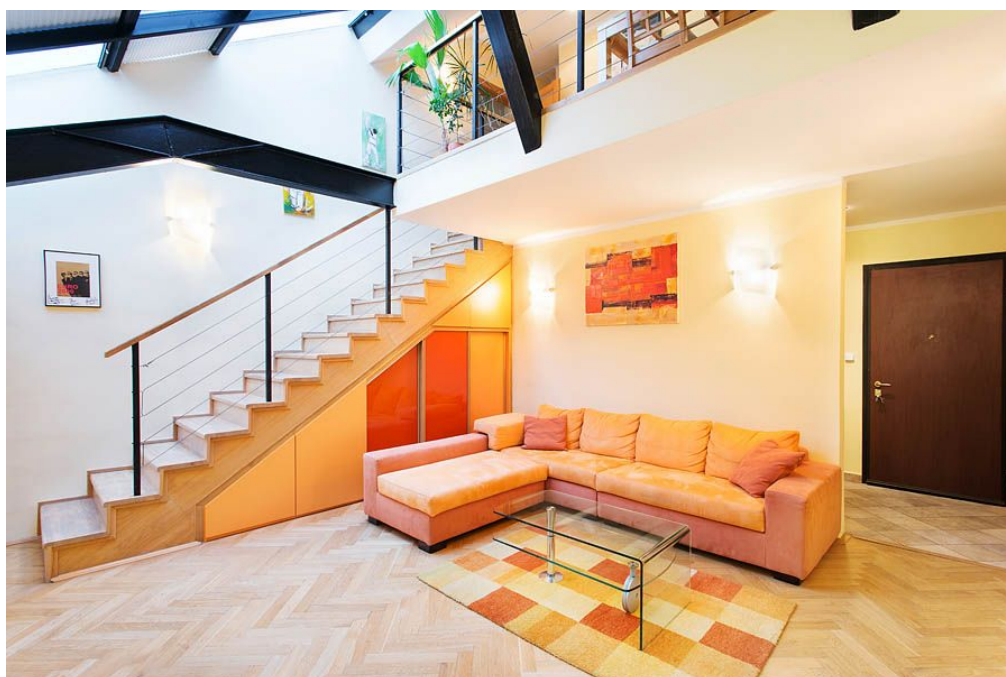




## Apartment Three-bedroom (4+kk)

Sold

119 m<sup>2</sup>, Prague 5, Smíchov, Na Valentince





## Apartment Three-bedroom (4+kk)

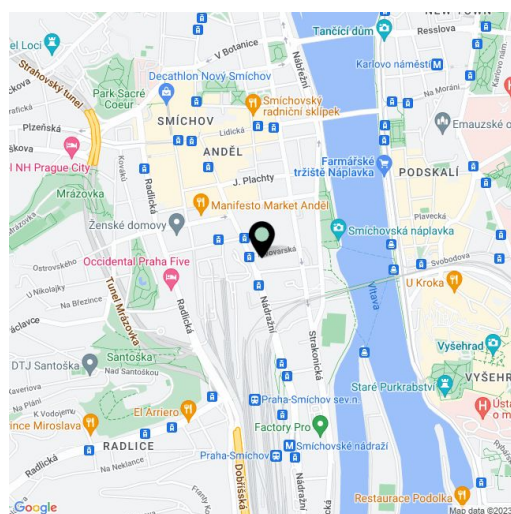
**Sold**119 m<sup>2</sup>, Prague 5, Smíchov, Na Valentince

|                  |  |
|------------------|--|
| Total area       | 119 m <sup>2</sup>                                     |
| Parking          | Garage parking in the courtyard included in the price. |
| Garage           | Yes  |
| Cellar           | -  |
| PENB             | G  |
| Reference number | 16838  |

Light split level apartment built in 2004 on the 4th and 5th floor of a renovated corner building with a lift, located just a short distance from the Vltava River and Anděl commercial and entertainment center, with multiple trams and the B line metro.

The lower floor offers a living room with a double height ceiling and fully fitted open kitchen, guest toilet, and entry hall. The upper floor has a gallery overlooking the living room, 3 bedrooms, and 2 bathrooms (one with a corner bathtub, bidet and toilet, second one with shower and toilet).

Features include 3 air-conditioning units, wooden floors, storage space under the stairs, remote controlled roof windows. Interior 118.8 m<sup>2</sup>.



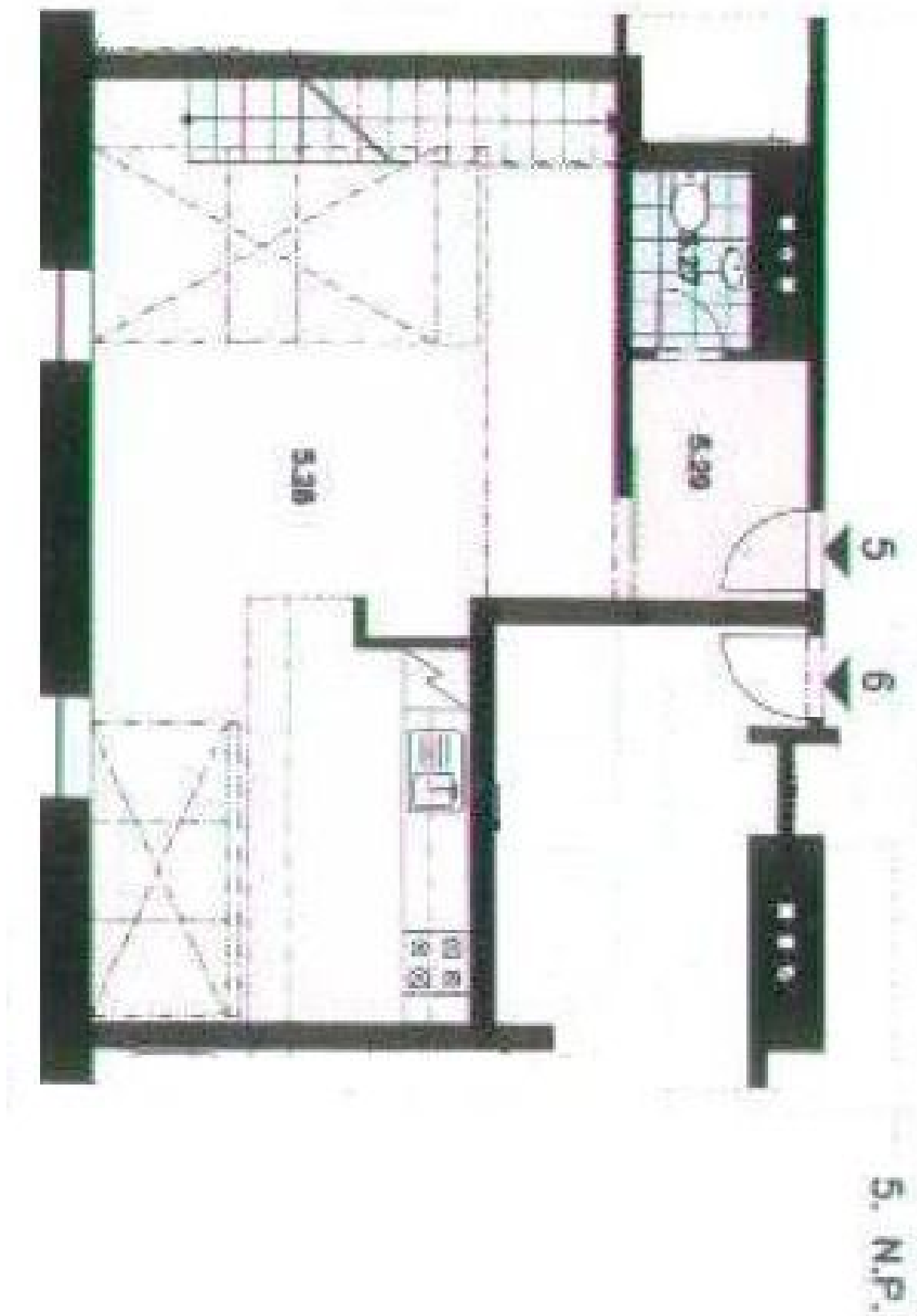
\* Area of the unit according to the Civil Code. The area consists of the sum total area of the entire unit bounded by perimeter walls.



## Apartment Three-bedroom (4+kk)

119 m<sup>2</sup>, Prague 5, Smíchov, Na Valentince

Sold





## Apartment Three-bedroom (4+kk)

119 m<sup>2</sup>, Prague 5, Smíchov, Na Valentince

Sold

