



Farmhouse estate

České Budějovice, Týn nad Vltavou

Sold





Farmhouse estate

České Budějovice, Týn nad Vltavou

Sold

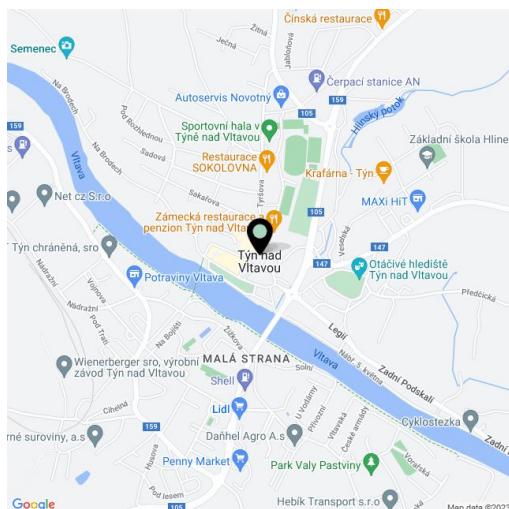
Usable area	1 200 m ²
Foot print	550 m ²
Plot	4 000 m ²
Parking	Yes
PENB	G
Reference number	16888

Historic villa built in 1864 for countess Terezie Wratislavová - Kocová of Dobrš situated in Koloděje nad Lužnicí right next to Týn nad Vltavou on extensive grounds on the banks of the Lužnice river overlooking a castle.

The villa is suitable for reconstruction, part of the repair work were already undertaken, all utilities are available on the plot, except for gas. Possible use as a **mooring, navigable from the Orlík dam**. Well documented history, including original photographs.

Recreation area, suitable for tourist infrastructure, guest house, hotel, restaurant, apartments, selfcatering studios, relax, wellness, gallery, training and cultural center, apartment building, etc. Opportunities for fishing, biking, summer camping, hiking in the romantic Lužnice valley. This area is a frequent destination for Dutch tourists, fishermen or cyclists.

Built-up area 550 m², total floor area of 1200 m², brick vaulted cellars 250 m², plot 4000 m².





Farmhouse estate

České Budějovice, Týn nad Vltavou

Sold

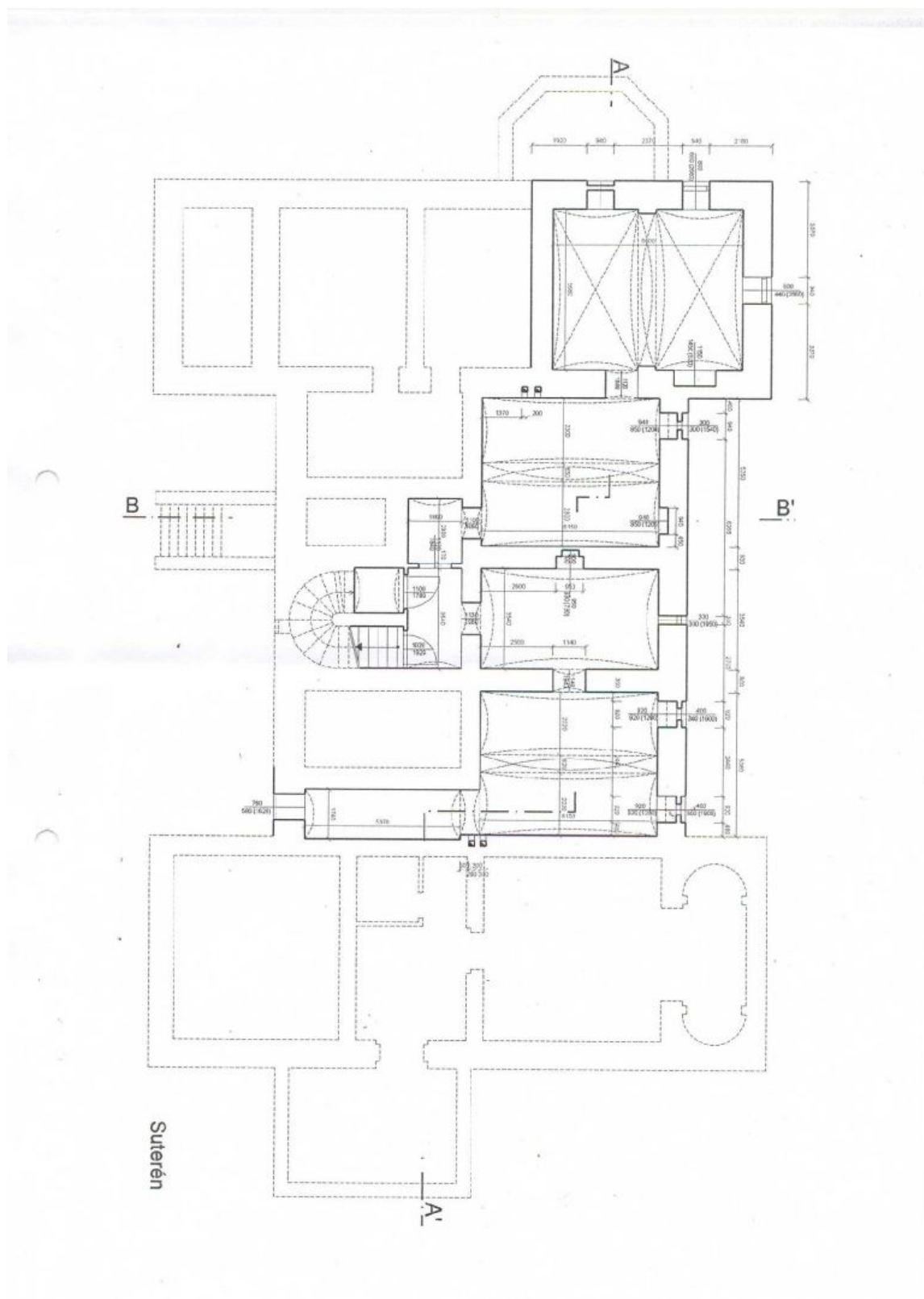




Farmhouse estate

České Budějovice, Týn nad Vltavou

Sold

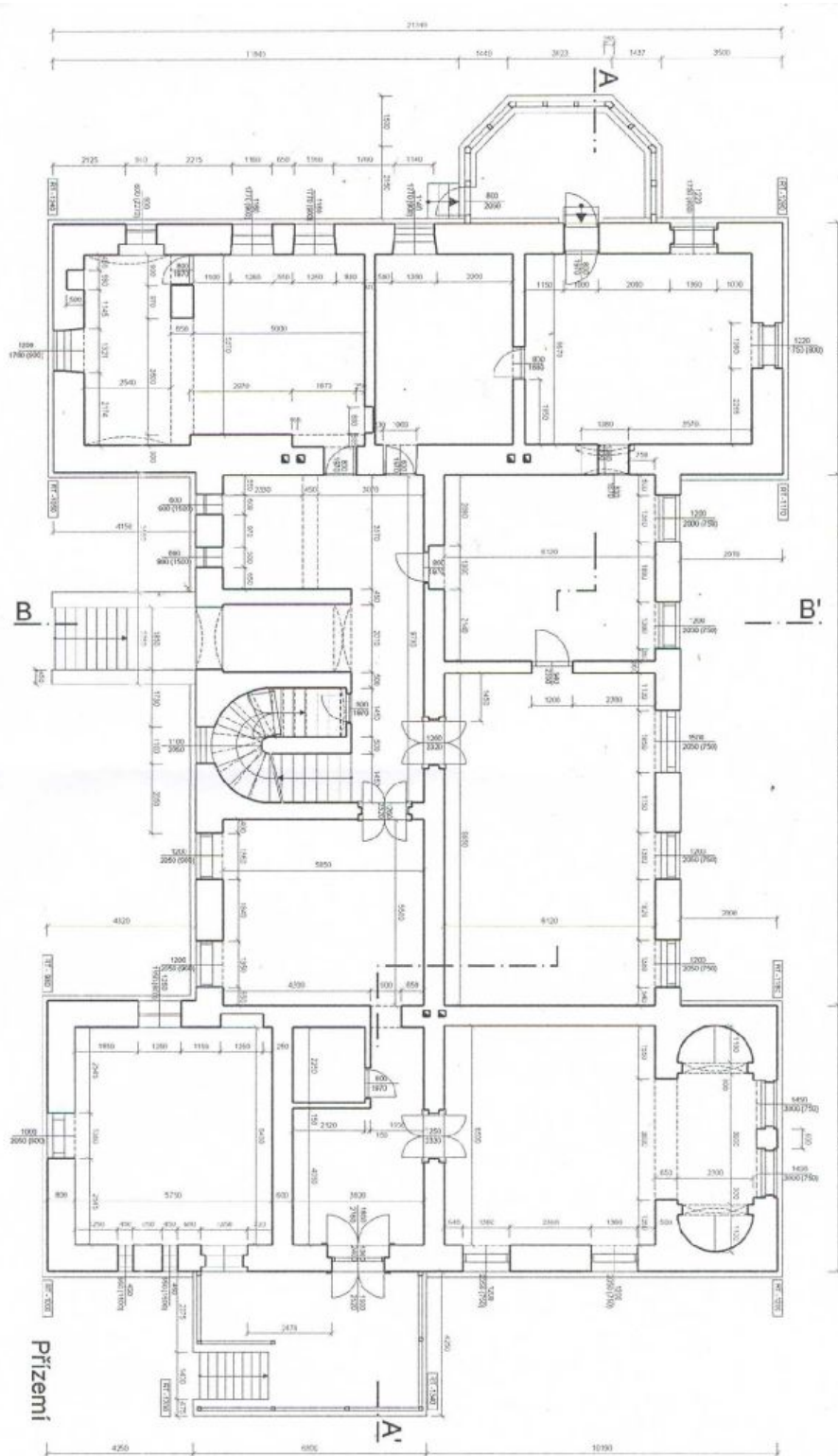




Farmhouse estate

České Budějovice, Týn nad Vltavou

Sold

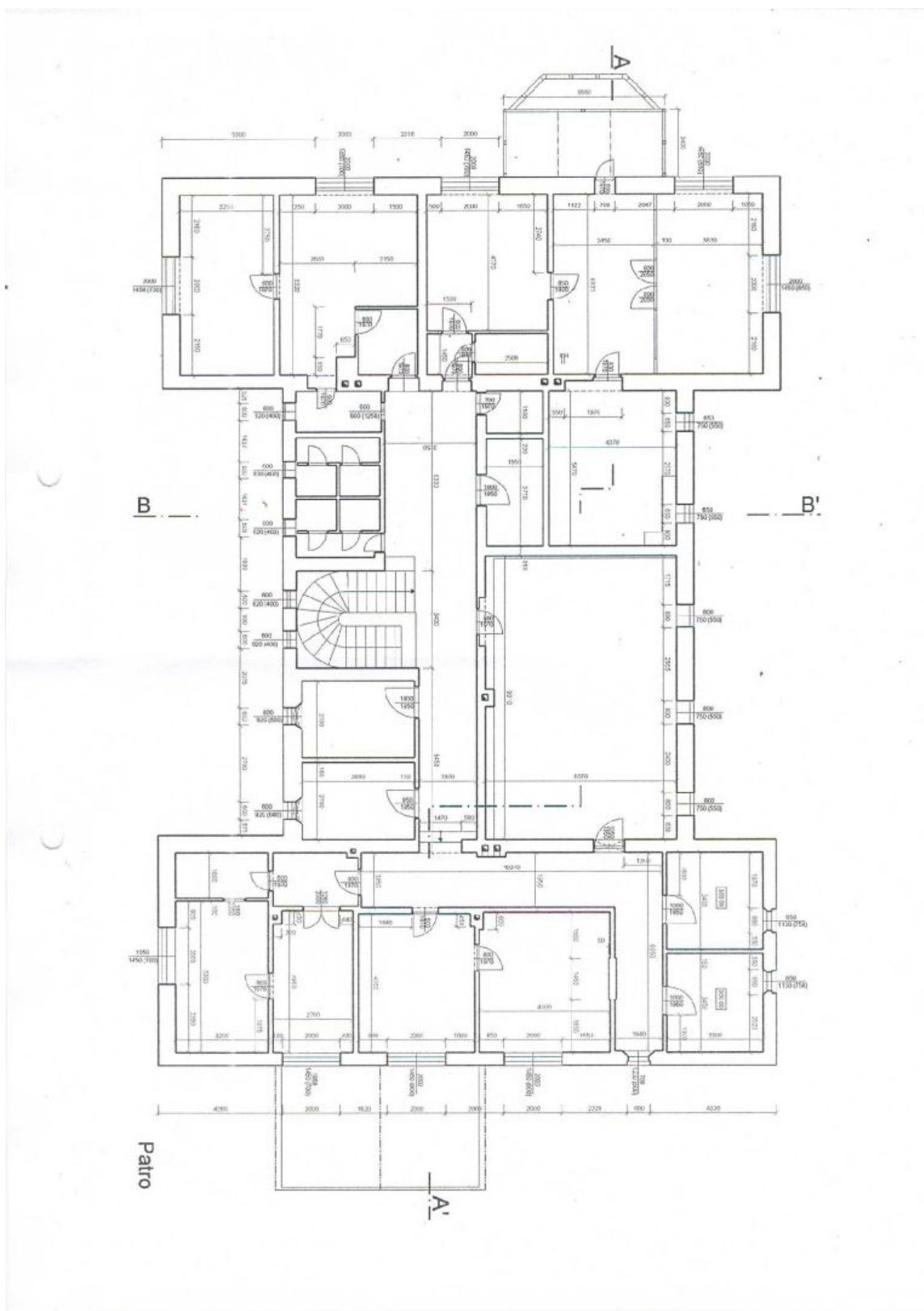




Farmhouse estate

České Budějovice, Týn nad Vltavou

Sold





Farmhouse estate

České Budějovice, Týn nad Vltavou

Sold

