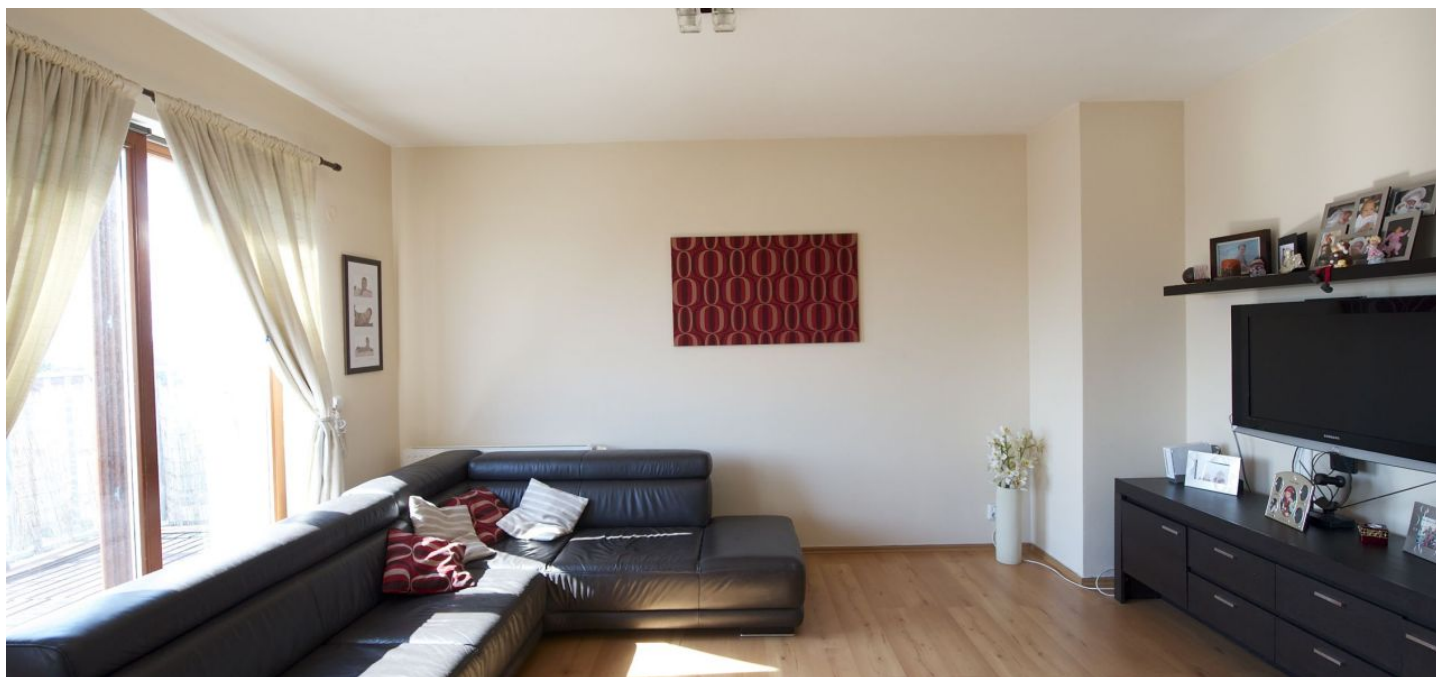




## Apartment Three-bedroom (4+kk)

Sold

106 m<sup>2</sup>, Prague 8, Kobylišy, Ke Stírce





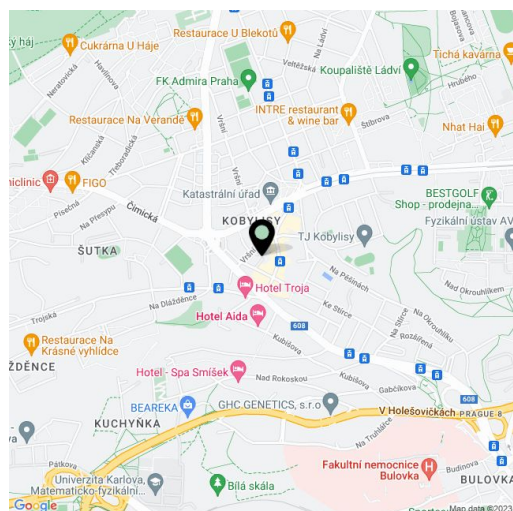
## Apartment Three-bedroom (4+kk)

**Sold**106 m<sup>2</sup>, Prague 8, Kobylisy, Ke Stírce

|                  |   |
|------------------|---|
| Total area       | 162 m <sup>2</sup>                                  |
| Floor area*      | 106 m <sup>2</sup>                                  |
| Terrace          | 56 m <sup>2</sup>                                   |
| Parking          | one parking space is included in the purchase price |
| Garage           | Yes   |
| Cellar           | Yes   |
| PENB             | G   |
| Reference number | 16908   |

**Modern duplex apartment with 2 terraces offering panoramic views of the city, situated on the 4th floor of a new building, just a 3 minute walk from Kobylisy metro station.**

The first floor offers a living room with a fully equipped kitchen and access to the first terrace, master bedroom, bathroom and storage room. Upstairs there are 2 bedrooms, a large bathroom, storage/dressing room and second terrace. Nice location with full public amenities and excellent transport links to the city center. **The purchase price includes a cellar and one garage parking space.** Interior 106.2 m<sup>2</sup>, 56.3 m<sup>2</sup> terrace.



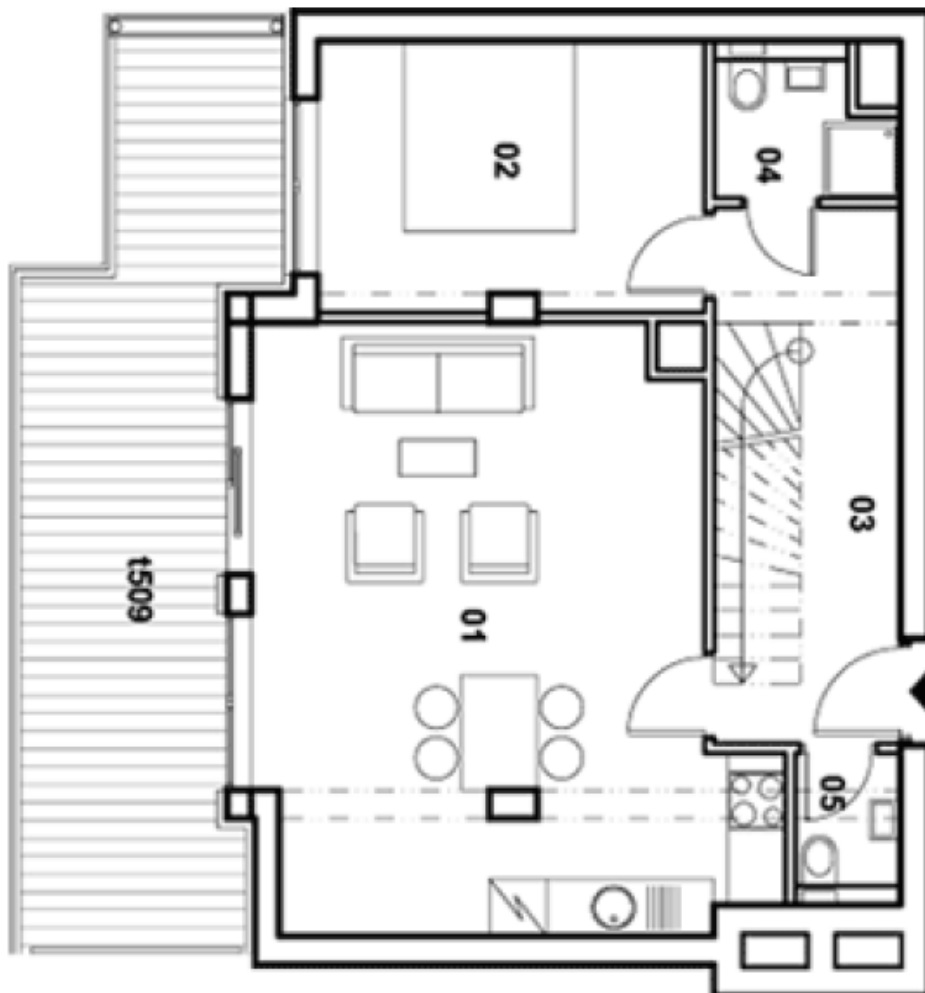
\* Area of the unit according to the Civil Code. The area consists of the sum total area of the entire unit bounded by perimeter walls.



## Apartment Three-bedroom (4+kk)

Sold

106 m<sup>2</sup>, Prague 8, Kobylisy, Ke Stírce





## Apartment Three-bedroom (4+kk)

Sold

106 m<sup>2</sup>, Prague 8, Kobylisy, Ke Stírce

