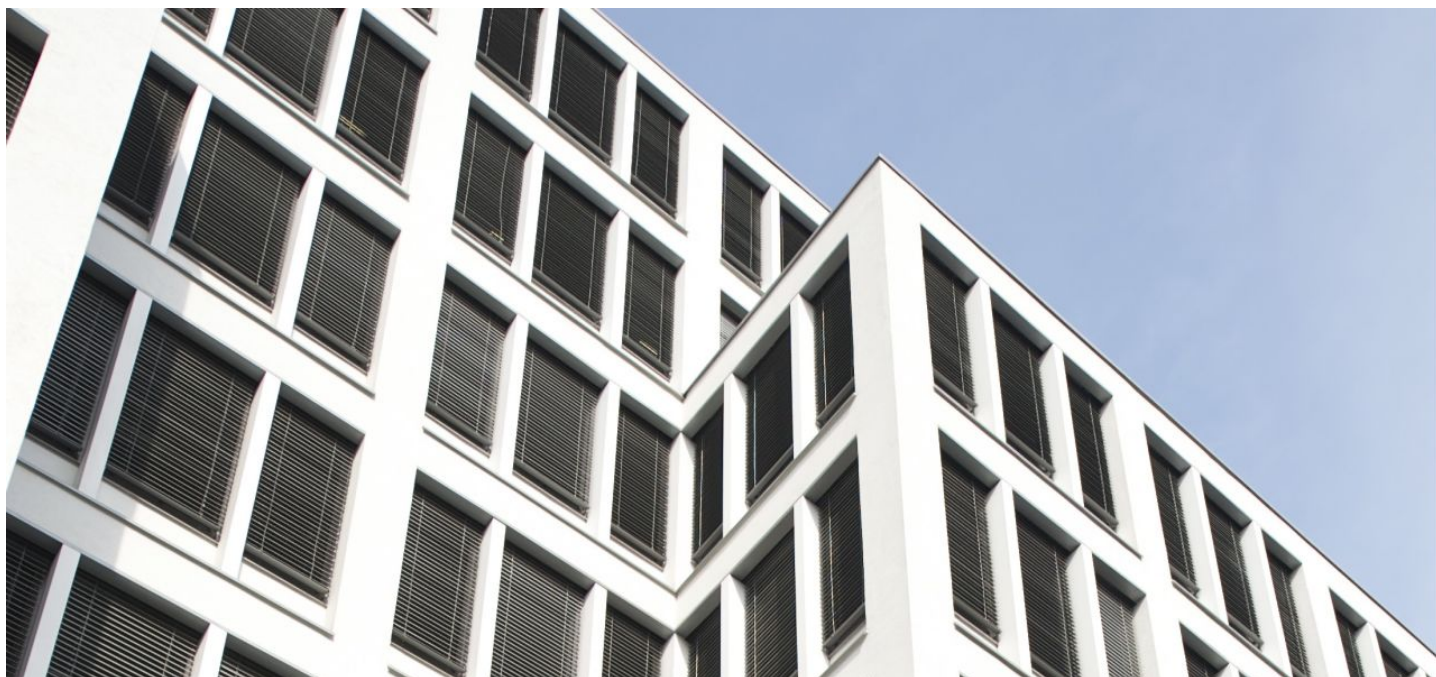




## Office space

Prague 8, Karlín, Rohanské nábřeží

€ 17.80 / m<sup>2</sup> | CZK 447 / m<sup>2</sup>





## Office space

Prague 8, Karlín, Rohanské nábřeží

€ 17.80 / m<sup>2</sup> | CZK 447 / m<sup>2</sup>

Service price	115 CZK monthly per m <sup>2</sup>
Available area	370 m <sup>2</sup>
Cellar	-
Parking	125 115 / pp / month
PENB	A
Reference number	16922

Offices in A-Class building meets the highest international quality standards. The typical floor of 8 story building is 1.260 sq m and offers maximum comfort for its occupiers. The building was designed with the prospect of coming requirements for space efficiency and flexibility, allowing tenants to choose an office layout according to their needs.

### Location:

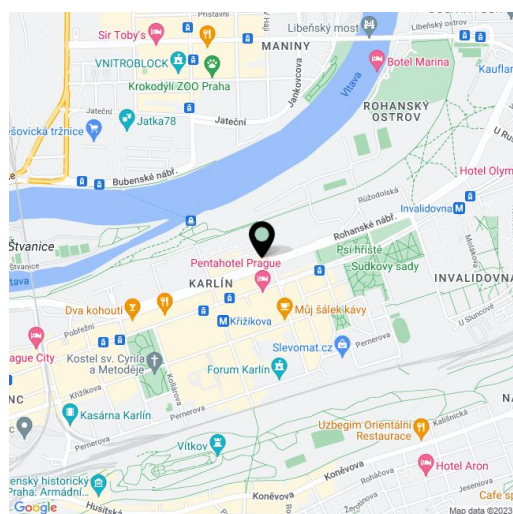
Located in the attractive Prague 8 – Karlín quarter, this new administrative project provides excellent accessibility by the adjacent tram and B-line underground stations ('Florenc' and 'Křižkova'). With its perfect accessibility by car towards the North-South arterial road and, consequently, D1 and D8 highways, Building brings you to the international Airport Václav Havel within less than 30 minutes. This location is renowned for its well established infrastructure and adjoining post offices, shops, restaurants, fitness, hotels etc.

### Features and Services:

- 24/7 Access
- Access Control
- Air Conditioning
- Green Certification
- Monitoring
- Openable Windows
- Outdoor shades
- Parking
- Raised Floor
- Reception
- Suspended Ceiling
- Ventilation

Photos may not represent the actual condition of the premises.

Rental and service charges are listed without VAT. Lessee pays no commission.





# Office space

Prague 8, Karlín, Rohanské nábřeží

€ 17.80 / m<sup>2</sup> | CZK 447 / m<sup>2</sup>

