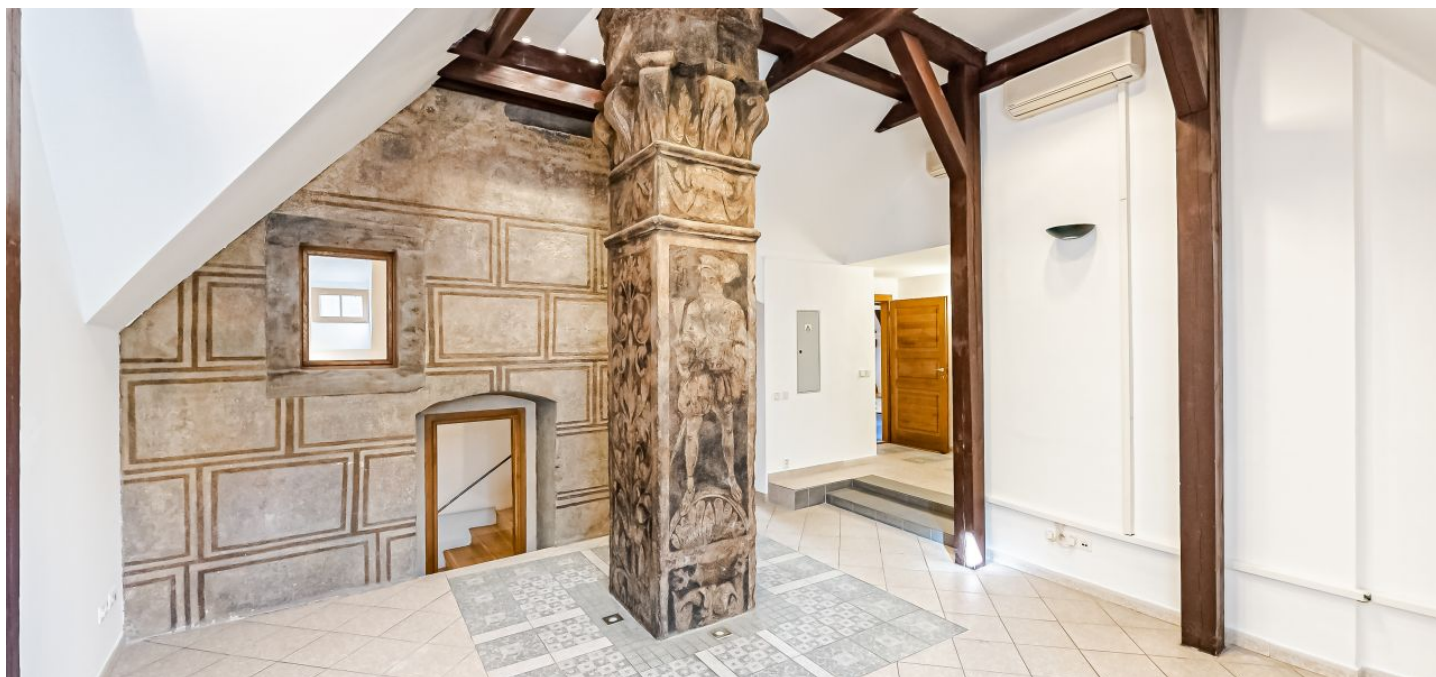




Office space

Prague 1, Staré Město, Týn

Rented



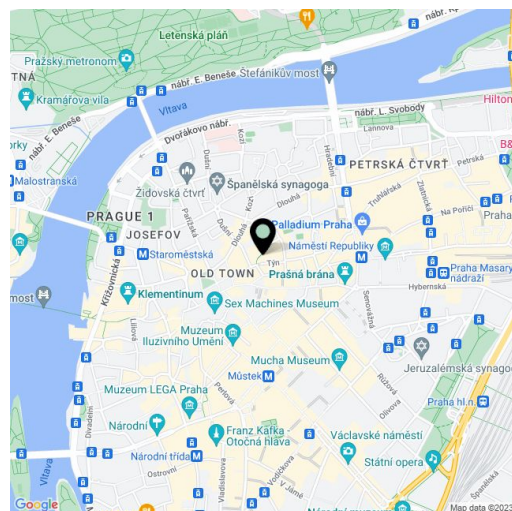


Office space

Prague 1, Staré Město, Týn

Rented

Service price	3 EUR monthly per m ²
Available area	231 m ²
Cellar	-
Parking	-
PENB	G
Reference number	16933



Office space for lease on the attic in the most prestigious addresses in Prague. The courtyard is situated between Tynska, Stupartska and Mala Stupartska streets, just 100 meters from Old Town Square. The foundation of this complex dates back to the 11th century. The original building was used as a customs duty collection center ("Ungelt" means "toll" in archaic Czech). The courtyard is made up of buildings in a variety of architectural styles, the most impressive being the beautiful Renaissance-era Granovsky Palace.

The complex was reconstructed in the mid 90's, today there is 7,000 sqm of prime retail and office space. It was the main seat and headquarters for a Central and Eastern European company that dealt with international audits, taxes, consulting and financial advisory services until 2007, and then a law firm. The space is currently occupied by a media agency as well as other tenants. For its unique atmosphere, the retail space has become an attractive destination for local and international galleries, restaurants and cafés. The administrative complex consists of 3 interconnected buildings, converted for this use.

Location:

The complex is located mere steps from Old Town Square (metro line A) and is only a few minutes walk from Náměstí Republiky Square (metro line B) and the Můstek metro station (metro lines A, B). Parking is possible on Pařížská Street or at Burzovní Palace on Rybná Street, or in the Palladium or Kotva Shopping centers.

Features and Services:

Air-conditioning
Parquet flooring
Renaissance terrace
Lift
Toilets
Kitchenette

Rental and service charges listed without VAT. Lessee pays no commission.