



House Nine-bedroom (10+1)

Sold

583 m², Praha-východ, Velké Popovice, K veseláku





House Nine-bedroom (10+1)

Sold583 m², Praha-východ, Velké Popovice, K veseláku

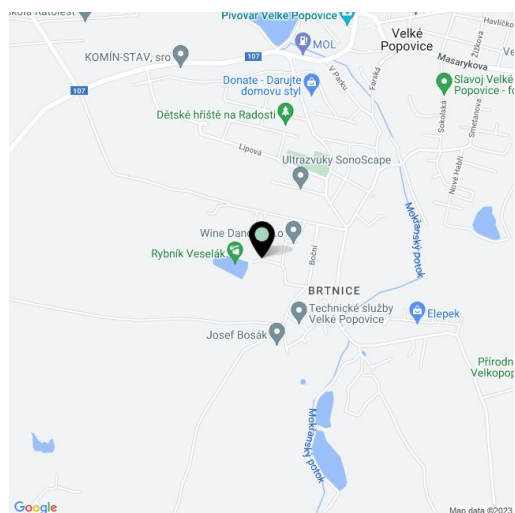
Total area	583 m ²
Plot	3 796 m ²
Foot print	194 m ²
Garden	3 504 m ²
Floor area	513 m ²
Terrace	70 m ²
Parking	-
Cellar	-
PENB	G
Reference number	17016

This sunny south-facing villa with terraces and views of the surrounding forest, meadows and adjacent pond is located in the protected area of Velkopopovicko, less than 30 min. to the center of Prague.

The ground floor has an entrance hall with WC and cloakroom, spacious living room and a relaxation room with connection to a sauna. There is also a kitchen, four bedrooms with en suite bathrooms, extra WC and utility room. The first floor has three bedrooms with terraces, a bathroom and an extra WC.

Aluminium windows with double glazing and aluminum shutters and superior masonry ensure coolness in the summer and insulation in the winter. Heating gas boiler Buderus, private well. External security camera system and sensory motion sensors on all windows and doors, **security monitoring systems** connected to the ARC.

The interior is 335.28 m², terraces 178.5 m², plot 3 796 m².

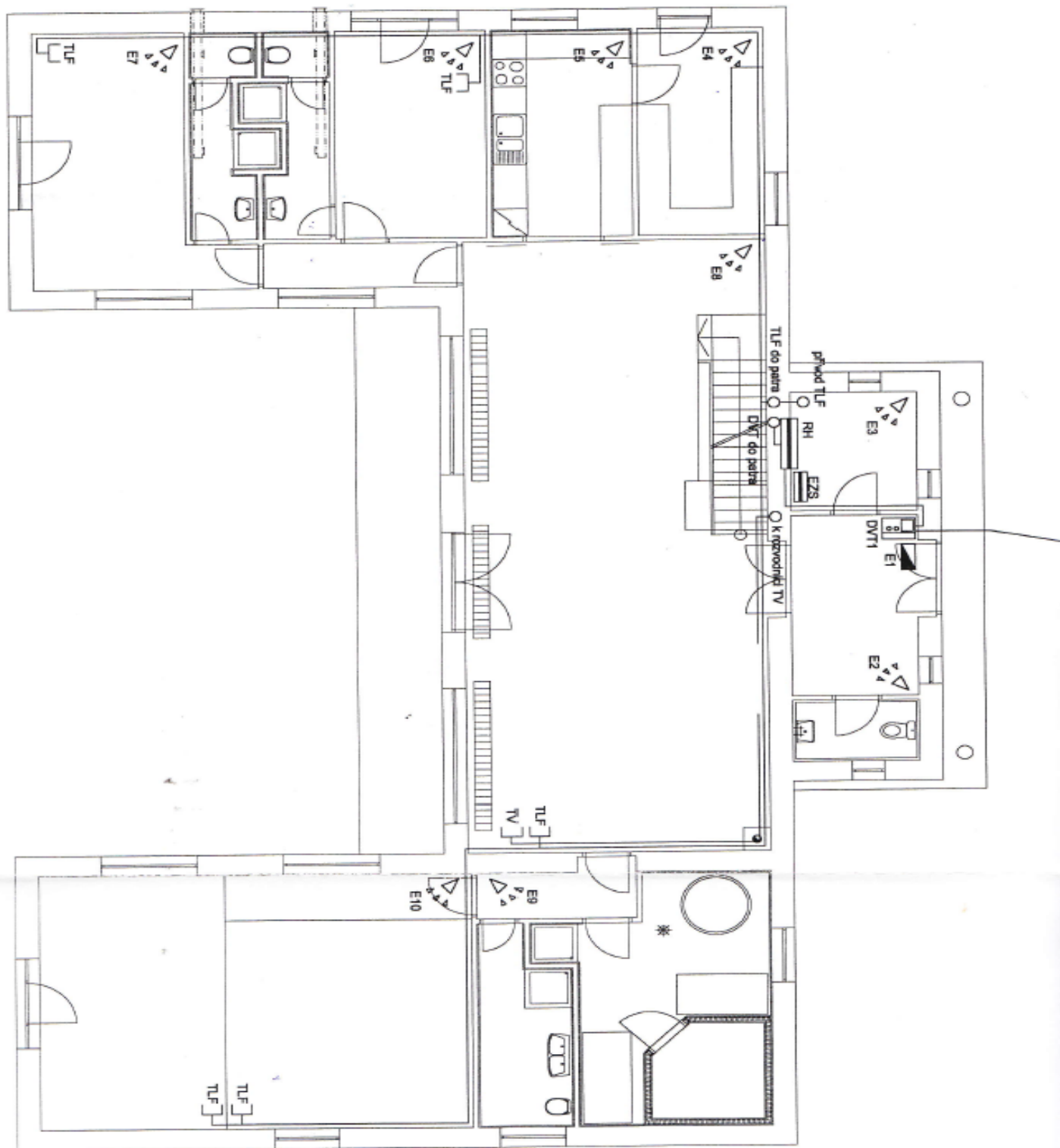




House Nine-bedroom (10+1)

583 m², Praha-východ, Velké Popovice, K veseláku

Sold





House Nine-bedroom (10+1)

583 m², Praha-východ, Velké Popovice, K veseláku

Sold

