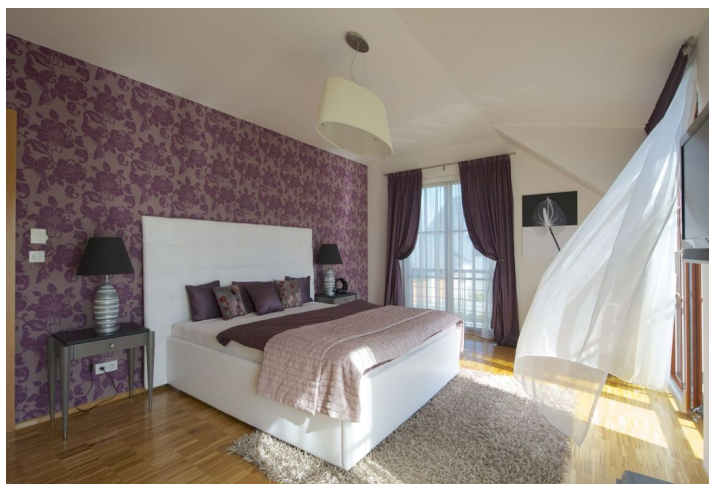




House Six-bedroom (7+1)

350 m², Prague 10, Benice, Chotěbuzská

Sold





House Six-bedroom (7+1)

350 m², Prague 10, Benice, Chotěbuzská

Sold

Plot	851 m ²
Foot print	220 m ²
Garden	631 m ²
Parking	Double garage.
Garage	Yes
Cellar	-
PENB	G
Reference number	17107

Modern house with a whirlpool, terraces and balconies located in a quiet and green architecturally unified residential area on the outskirts of Prague. Easy connection to Prague: 15 minutes by car (highway D1), within easy reach of the Čestlice shopping area and public amenities in Průhonice.

The ground floor features a spacious double height living room with a fireplace and access to the terrace, a fully integrated kitchen, pantry / laundry room, two bedrooms with garden/terrace access, shower bathroom, walk-in closet, storage room, guest toilet, and entry hall. The upper floor includes master bedroom with a walk-in closet, full en-suite bathroom and balcony, bedroom with an en-suite shower bathroom and balcony, two more bedrooms, full bathroom, and terrace.

Air-conditioning, French windows, built-in wardrobes, lots of storage space, parquet floors, heated tiles in bathrooms, garden furniture, Internet and audio points throughout, alarm. Double garage.

