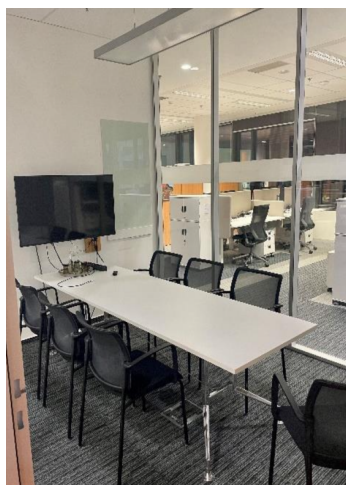
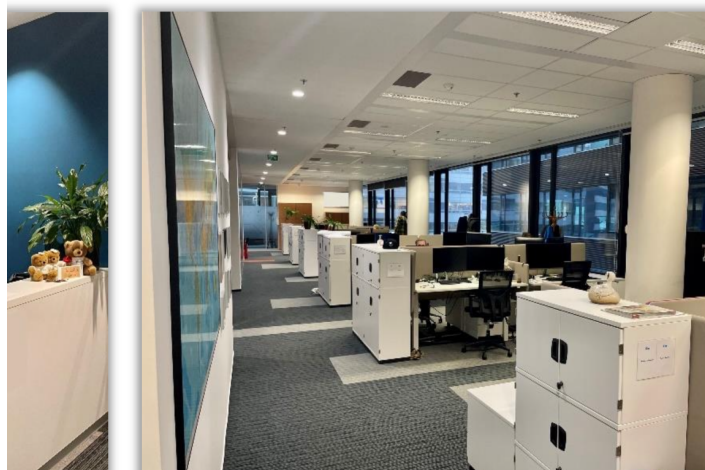
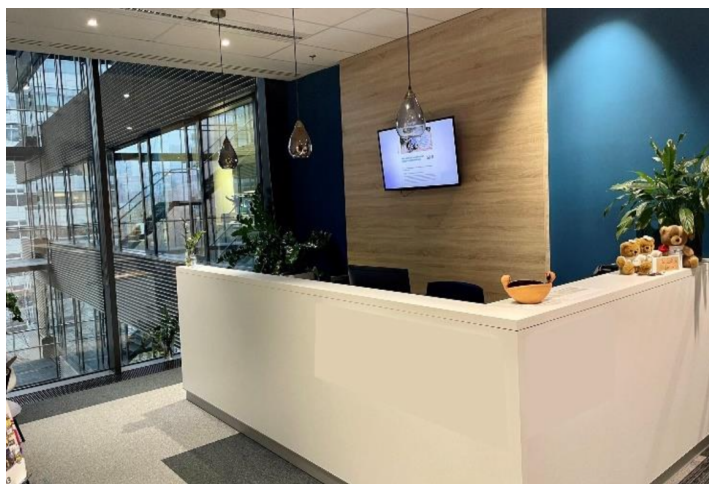




Office space

Prague 4, Michle, Vyskočilova

€ 17.15 / m² | CZK 431 / m²



**Office space**

Prague 4, Michle, Vyskočilova

€ 17.15 / m² | CZK 431 / m²

| | |
|-------------------------|-----------------------------------|
| Service price | 96 CZK monthly per m ² |
| Available area | 531 m ² |
| Cellar | - |
| Parking | EUR 130 / ps / month |
| PENB | C |
| Reference number | 17290 |

Office premises for sublease until October 2027 on the 4th floor of an administrative complex located in the southeastern part of the BB Centrum, between Vyskočilova and Sedláčkova streets. The office space is fully equipped.

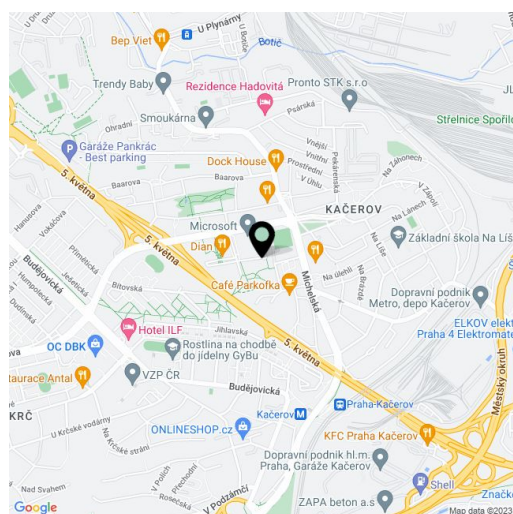
Location:

Excellent access by car and public transport – strategically situated near the D1 highway and the Prague Ring Road, a shuttle bus connects the building and the Kačerov and Budějovická metro stations (line C).

Features and Services:

- Canteen
- 24/7 access and security
- Possibility of placing a logo on the building
- 10 parking spaces
- Professional building management
- Air conditioning - chilled beams
- Clear height of the space is 3 m
- Interior modulation 1.35 m
- Suspended ceilings with integrated lighting
- External blinds on the east, west and south facades
- Sprinklers
- Raised floors with floor boxes - 1 box per 10 sqm

Rental and service charges are listed without VAT. Lessee pays no commission.

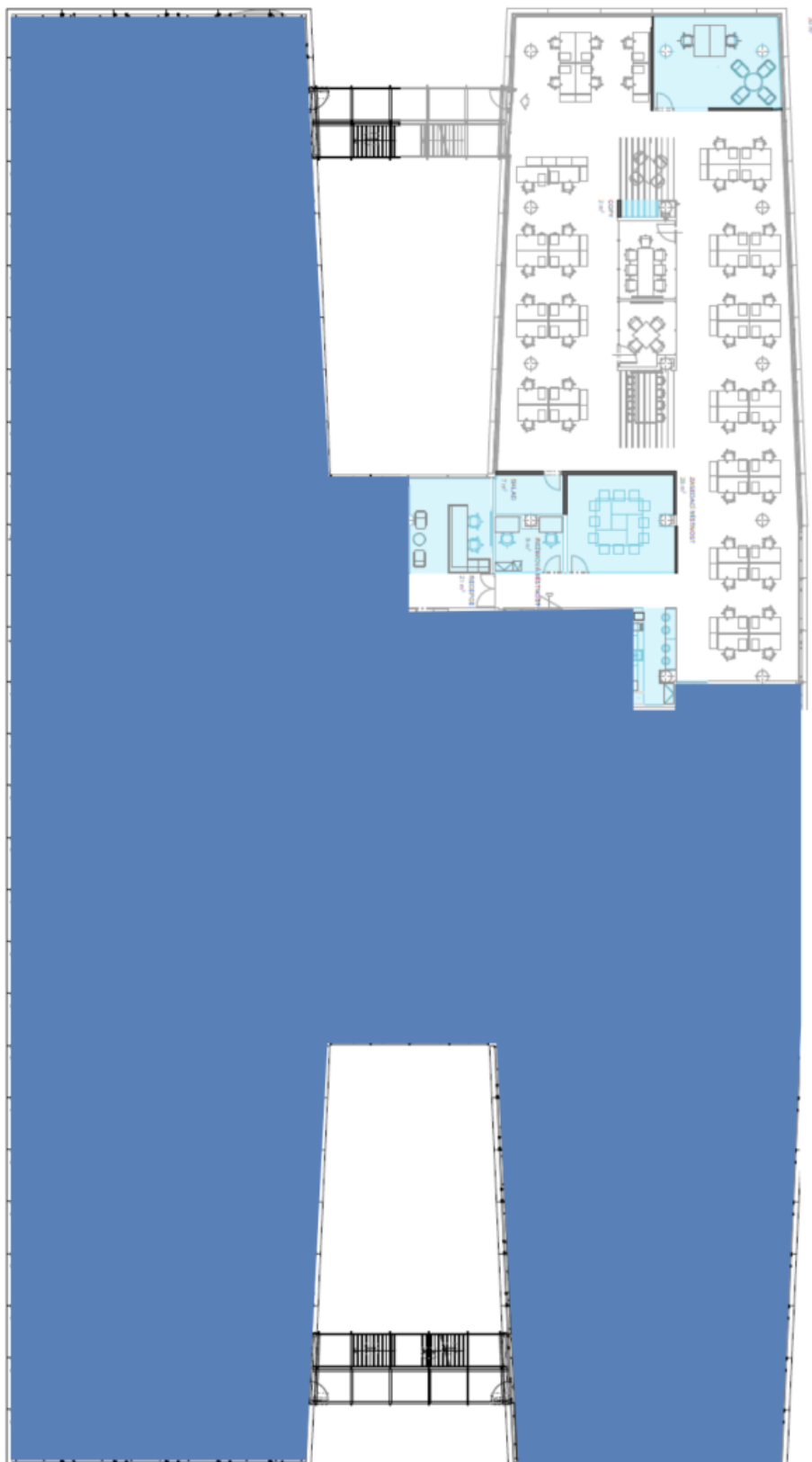




Office space

Prague 4, Michle, Vyskočilova

€ 17.15 / m² | CZK 431 / m²



521sqm NLA / 605sqm GLA