



Apartment Studio (1+kk)

98 m², Prague 5, Smíchov, Křížová

Sold





Apartment Studio (1+kk)

98 m², Prague 5, Smíchov, Křížová

Sold

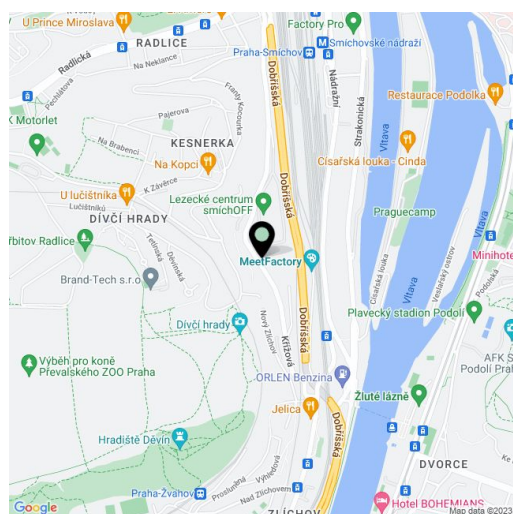
Total area	98 m ²
Parking	One garage parking space included in the purchase price.
Garage	Yes
Cellar	-
PENB	G
Reference number	17295

This loft studio with a gallery, suitable for use as an office space, is situated on the 5th floor of a renovated factory building from 1900 that is complete with a lift, and offers distinctive architecture, high ribbed ceilings and large windows. The apartment is located near the quiet Prokop Valley.

The entire interior is designed as an open space with an entrance hall, living room, fully equipped kitchenette, bathroom with shower and separate toilet. The open gallery offers a work area with room for two, a bedroom with a double bed and an area suitable for storage space, etc.

Features include blinds, security doors, Wi-Fi Internet, data networks, cable TV connection UPC, video intercom. Single garage space available.

Interior 98 m² (lower floor 75,63 m², gallery 23 m²).



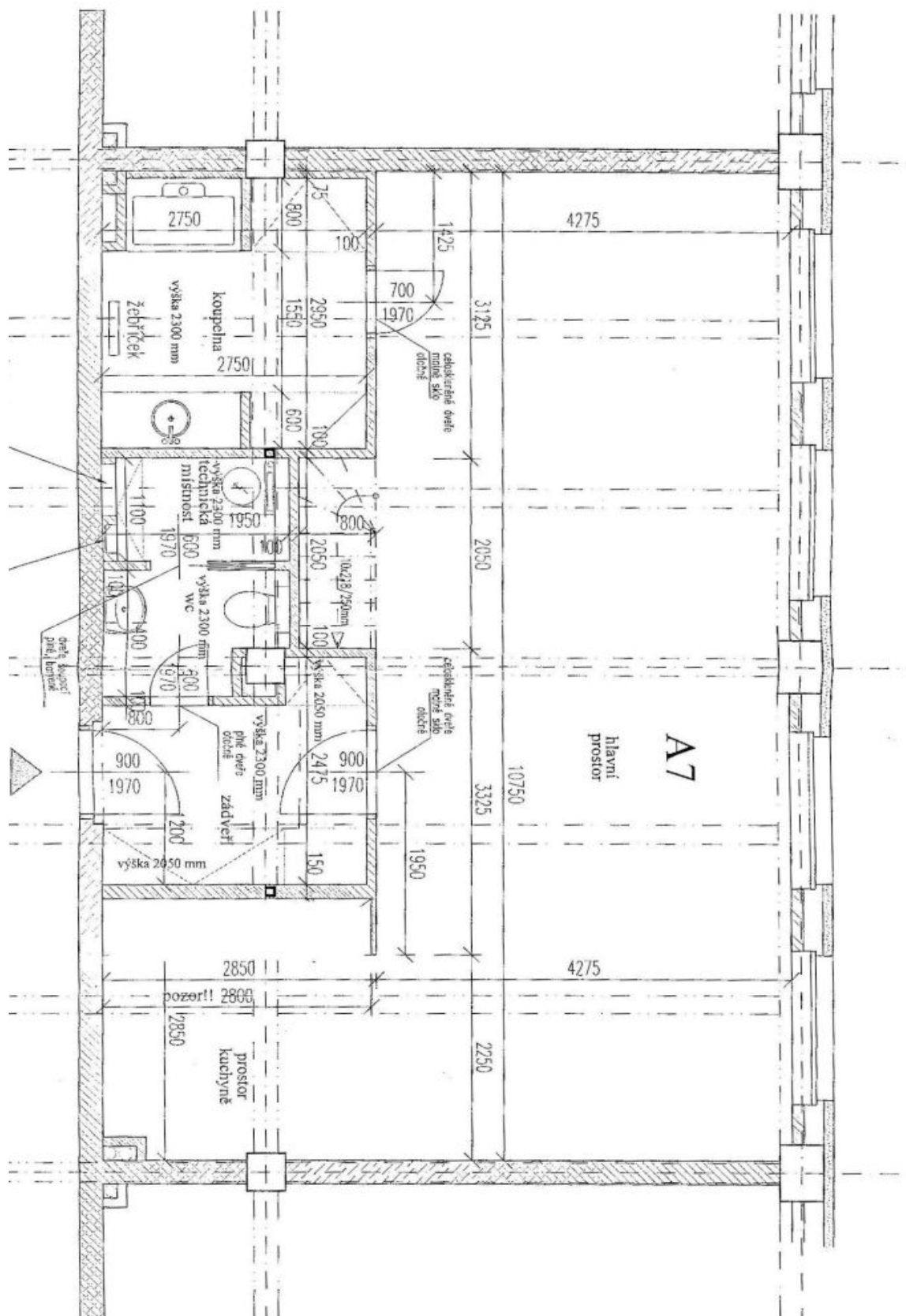
* Area of the unit according to the Civil Code. The area consists of the sum total area of the entire unit bounded by perimeter walls.



Apartment Studio (1+kk)

98 m², Prague 5, Smíchov, Křížová

Sold





Apartment Studio (1+kk)

98 m², Prague 5, Smíchov, Křížová

Sold

