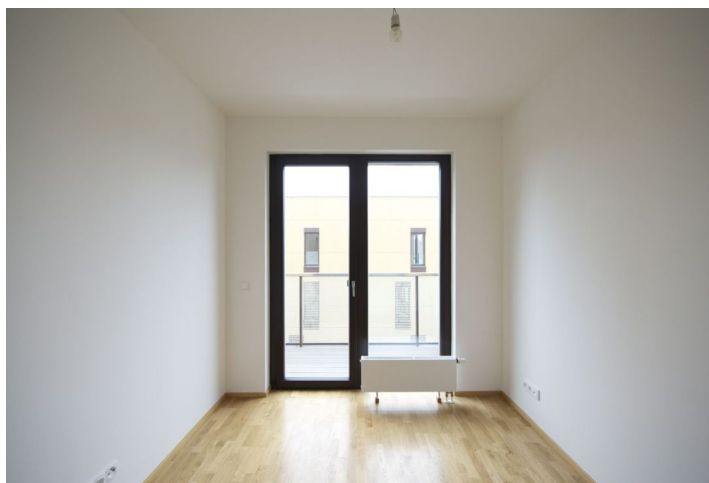




Apartment One-bedroom (2+kk)

Rented

72 m², Prague 4, Michle, Baarova





Apartment One-bedroom (2+kk)

Rented

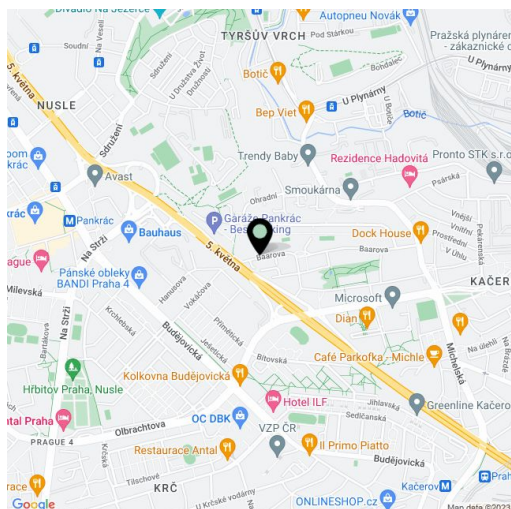
72 m², Prague 4, Michle, Baarova

| | |
|------------------|--------------------|
| Total area | 74 m ² |
| Floor area* | 72 m ² |
| Balcony | 2 m ² |
| Parking | Parking available. |
| Garage | Yes |
| Cellar | Yes |
| PENB | G |
| Reference number | 17304 |
| Available from | Immediately |

Brand new 1-bedroom flat with a 2 m² balcony situated on the 1st floor with lift in a new residential development with 24-hour reception, security, new park, children's playground and underground parking. Location with full range of amenities, near the BB Centrum and Brumlovka multipurpose centers, with bus connections to Budějovická and Pankrác metro stations and quick access to the city center.

The interior includes living room with a fully fitted open kitchen, one bedroom with a bathroom (bath tub, bidet, toilet) and walk-in closet, guest toilet, laundry room, and entry hall. The balcony is accessible from both main rooms.

Wood floors and tiles, built-in wardrobes, security door, dishwasher, microwave, audio entry phone. Cellar, chip entry to the building. Parking space available for CZK 2500/month. Monthly deposit for services CZK 6040. Electricity is billed separately. Interior 72 m², balcony 2 m².



* Area of the unit according to the Civil Code. The area consists of the sum total area of the entire unit bounded by perimeter walls.