



House Five-bedroom (6+1)

340 m², Prague 8, Dolní Chabry, Jana Marka

Sold





House Five-bedroom (6+1)

Sold340 m², Prague 8, Dolní Chabry, Jana Marka

Plot	809 m ²
Foot print	207 m ²
Garden	602 m ²
Parking	Yes
Garage	Yes
Cellar	-
PENB	A
Reference number	17319

Newly built passive family house located in a pleasant and quiet area of Prague 8 - Dolní Chabry, near Čimický Park and Dražanské Valley, with good access to the city center.

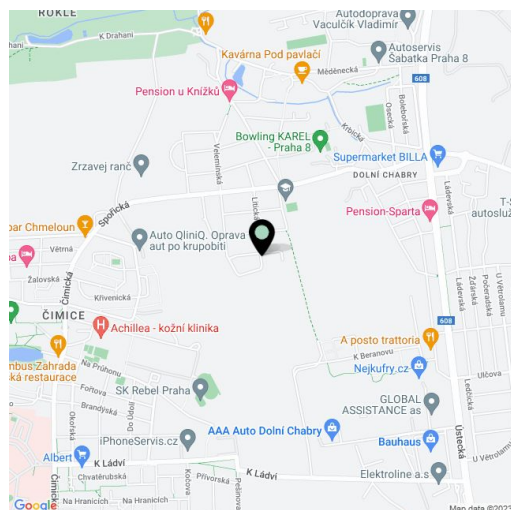
The ground floor of the house offers a spacious living room with separate kitchen, study room, single garage and a toilet. The upper floor consists of 4 bedrooms and 2 bathrooms with a toilet. **A client can have interior dispositions finished according to his wishes.**

Internal finishings include: intelligent power distribution system, STA, data and EZS, water and sewerage system, preparation for air-conditioning in all rooms, heated floor in the whole house except garage + final surface for laying floor materials. Heating pump and recuperation system - distribution in all rooms. Preparation for final paint. Roof - blown foam - insulation.

Exterior construction of the house is complete including insulation, facade, triple-glazed windows with wooden frames, wooden door, and tiles from natural stone. Preparation for outdoor window blinds.

The house is just a few minutes by bus to the Kobylisy metro station. Excellent connection to the D8 highway, which runs between Teplice and Mladá Boleslav. All public amenities in the area - a kindergarten and elementary school, Tesco shopping center, Globus.

Interior 340 m², garden 602 m². The purchase price includes VAT in the current state.

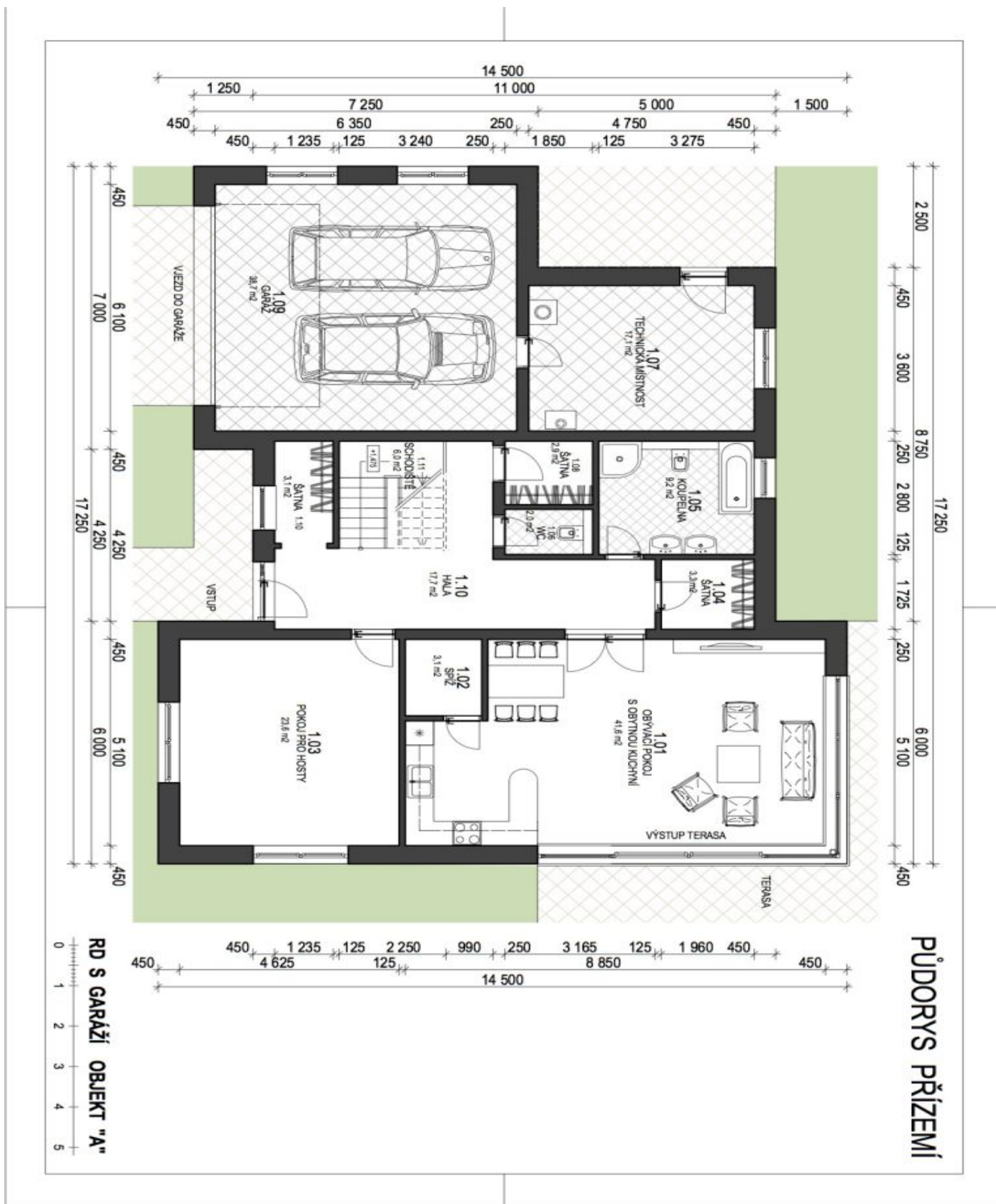




House Five-bedroom (6+1)

Sold

340 m², Prague 8, Dolní Chabry, Jana Marka





House Five-bedroom (6+1)

340 m², Prague 8, Dolní Chabry, Jana Marka

Sold

