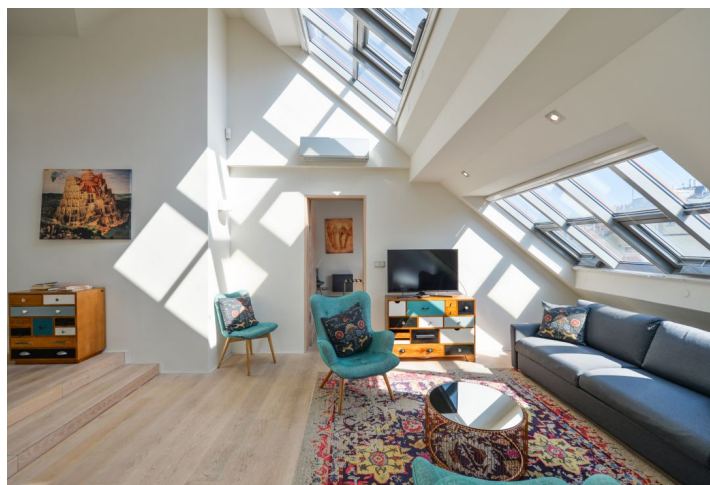




Apartment Three-bedroom (4+kk)

Rented

141 m², Prague 1, Nové Město, Ve Smečkách





Apartment Three-bedroom (4+kk)

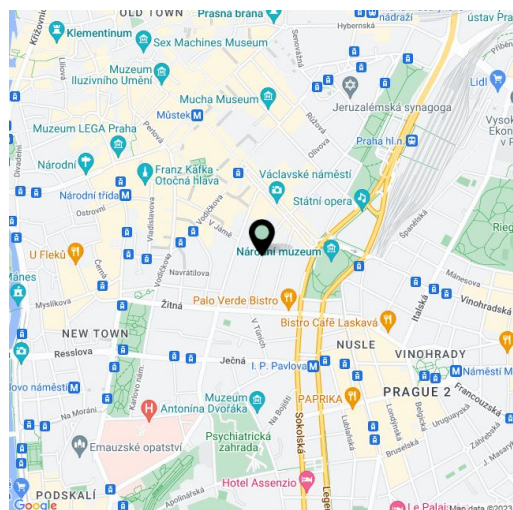
Rented141 m², Prague 1, Nové Město, Ve Smečkách

Total area	152 m ²
Floor area*	141 m ²
Terrace	11 m ²
Parking	-
Cellar	-
PENB	G
Reference number	17344
Available from	Immediately

Furnished 3-bedroom attic flat on the 5th floor of a partly reconstructed building with lift. Attractively located just a minute walk from Wenceslas Square with immediate access to all three Prague metro lines.

The apartment has living room, a fully fitted kitchen with terrace access, three bedrooms, bathroom with bath tub, separate toilet, and an entry hall.

Air-conditioning, floating floors, audio entry phone. Common building charges CZK 1000/person/month. Utilities are billed separately.



* Area of the unit according to the Civil Code. The area consists of the sum total area of the entire unit bounded by perimeter walls.



Apartment Three-bedroom (4+kk)

Rented

141 m², Prague 1, Nové Město, Ve Smečkách

