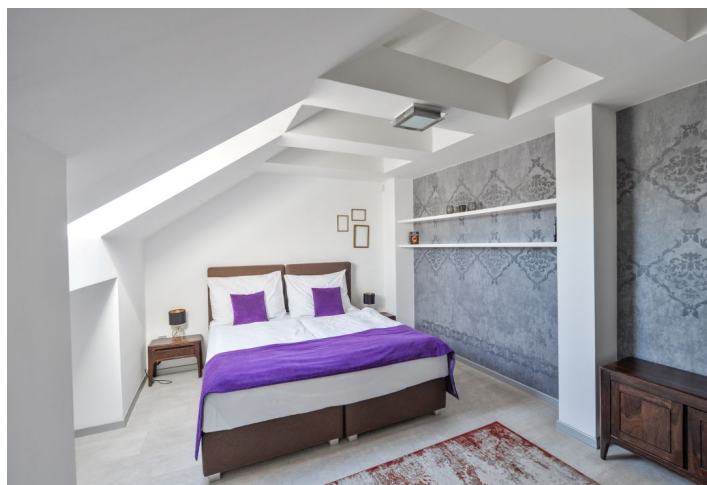




Apartment Four-bedroom (5+kk)

Rented

156 m², Prague 1, Nové Město, U Půjčovny





Apartment Four-bedroom (5+kk)

Rented

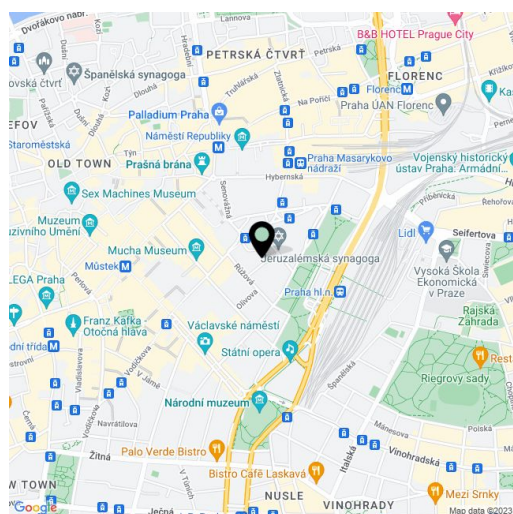
156 m², Prague 1, Nové Město, U Půjčovny

Total area	156 m ²
Parking	-
Cellar	-
PENB	G
Reference number	17345
Available from	Immediately

Completely refurbished furnished 4-bedroom 2-bathroom design attic flat for rent. Situated on the 5th floor of an renovated building with a lift. Centrally located in an attractive area just a short walk to Wenceslas Square, with excellent transportation connections (metro, trams).

The interior includes on the lower level an open entrance area with built-in wardrobes, living room with a fully fitted open kitchen, two bedrooms, bathroom with shower and toilet. Upper floor comprises of two bedrooms and fully equipped bathroom.

Air-conditioning, parquet floors, security entry door, dishwasher, microwave oven, alarm, audio entry phone. Common building charges CZK 1000/person/month. Gas and electricity are billed separately.



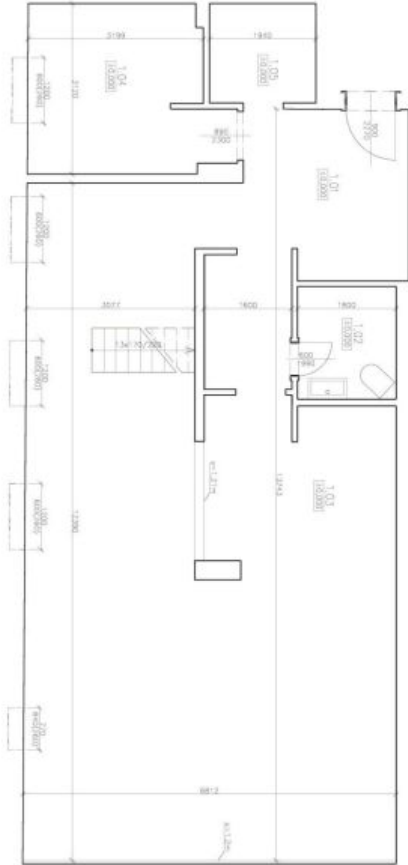
* Area of the unit according to the Civil Code. The area consists of the sum total area of the entire unit bounded by perimeter walls.



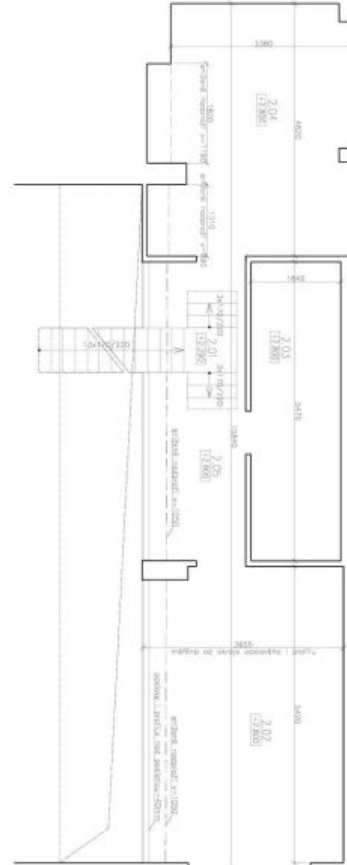
Apartment Four-bedroom (5+kk)

156 m², Prague 1, Nové Město, U Půjčovny

Rented



SPRÁVNÍ PLOCHA



KAPNÍ PLOCHA

Průběžná
Vyhodnocení k dispozici pouze po autorizované žádosti směřující k poskytnutí rozpisu úloh
a souvisejících přílohou včetně a povolení poskytnout úlohy

číslo	popis	rozloha (m ²)
1.01	1.01	13,20
1.02	1.02	3,7
1.03	1.03	68,26
1.04	1.04	30,48
1.05	1.05	3,53
2.01	2.01	3,71
2.02	2.02	19,86
2.03	2.03	6,97
2.04	2.04	16,68
2.05	2.05	8,02
suma		156,32 m²