



# Office space

Prague 1, Malá Strana, Všešrdova

Sold



**Office space**

Prague 1, Malá Strana, Všešrdova

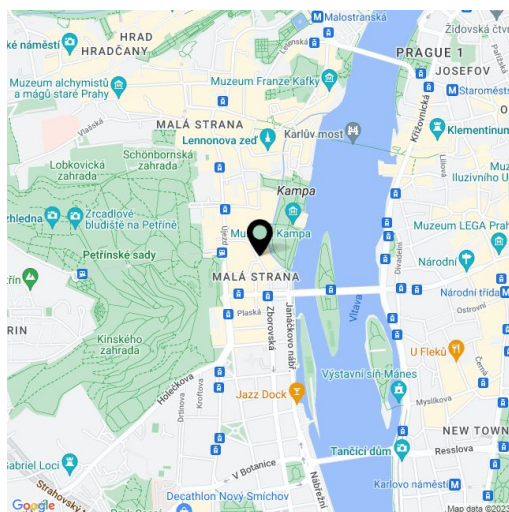
**Sold**

|                         |                    |
|-------------------------|--------------------|
| Available area          | 169 m <sup>2</sup> |
| Tenant consumption      | —                  |
| Parking                 | Yes                |
| Parking service charges | —                  |
| Parking ratio           | —                  |
| Certification           | —                  |
| PENB                    | G                  |
| Reference number        | 17380              |

**Commercial space with possibility of parking suitable for a representative office or a company headquarters, complete with parking and located just a few steps from Kampa Park; located in a completely reconstructed Neo-Classical building at an exceptional address in the center of Prague, just minutes away from Charles Bridge and National Theater.**

The commercial space on the 1st above-ground and 1st underground floor is suitable for a restaurant with a capacity of up to 60 guests. The space is offered in a shell & core state (electricity, satellite, Internet, layout for air-conditioning, new water and sewage pipes installed in the space). The building is fully reconstructed, occupants have access to a landscaped indoor courtyard with a Zen garden, individually controlled heating and air-conditioning systems, modern security and entry system into the building.

Interior 155.44 m<sup>2</sup>, storage 13.98 m<sup>2</sup>. Possibility to purchase a parking space directly in the building.

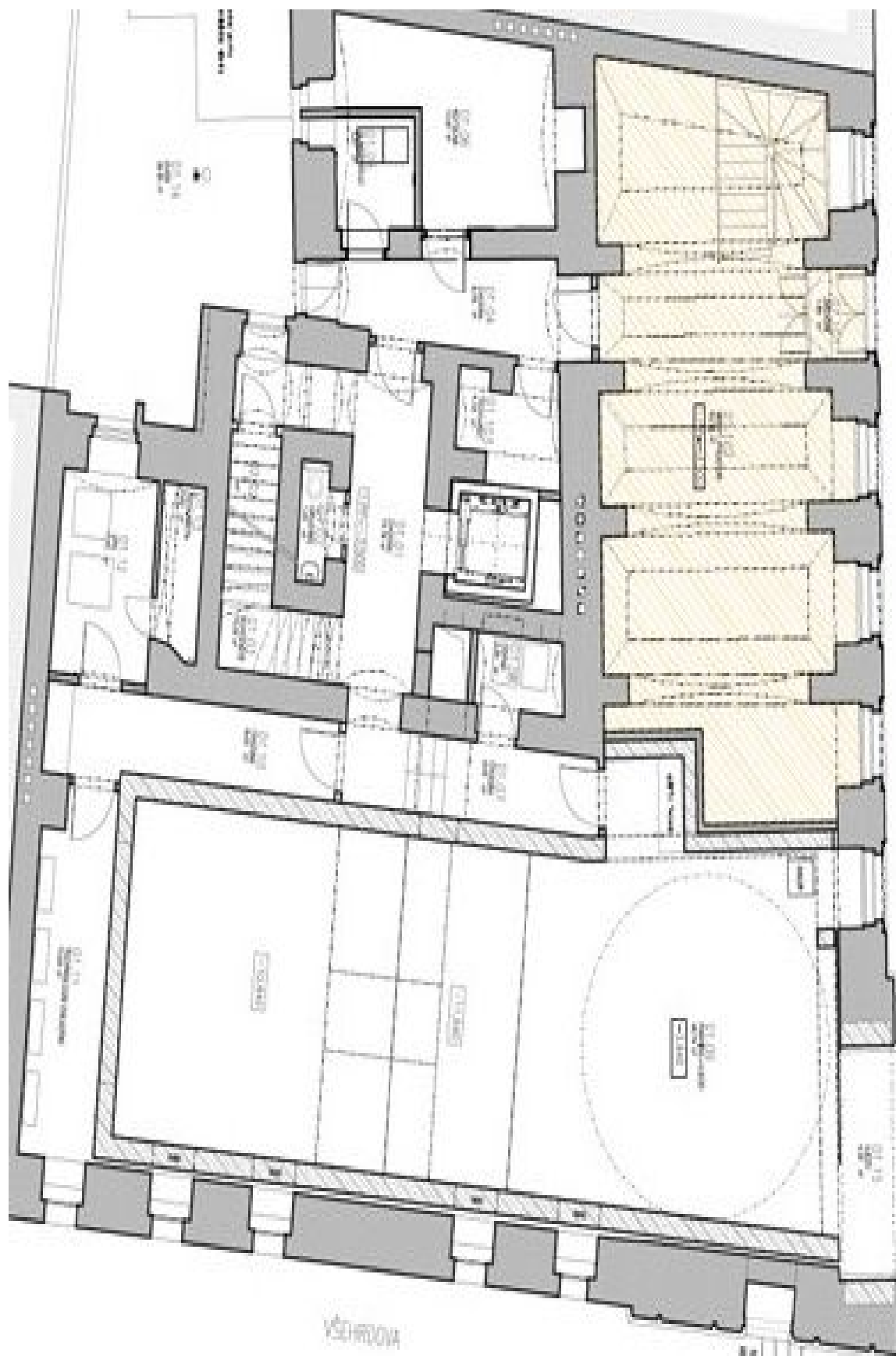




## Office space

Prague 1, Malá Strana, Všešrdova

Sold





## Office space

Prague 1, Malá Strana, Všešrdova

Sold

