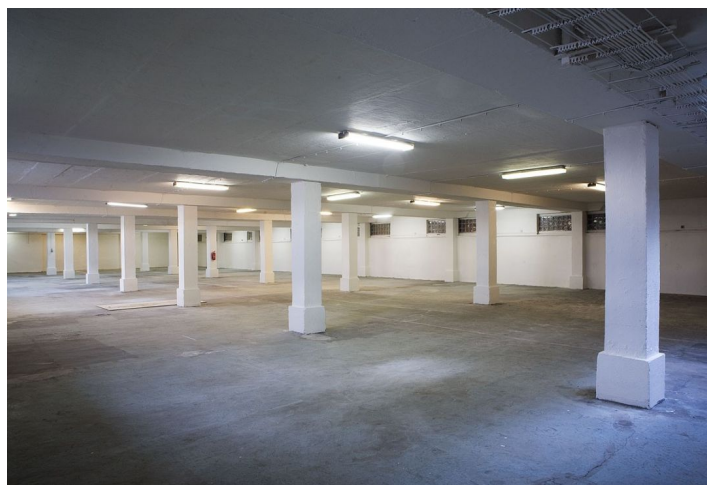




Logistic park

2 863 m², Praha 9, Horní Počernice, Ve Žlíbku

Ask for price

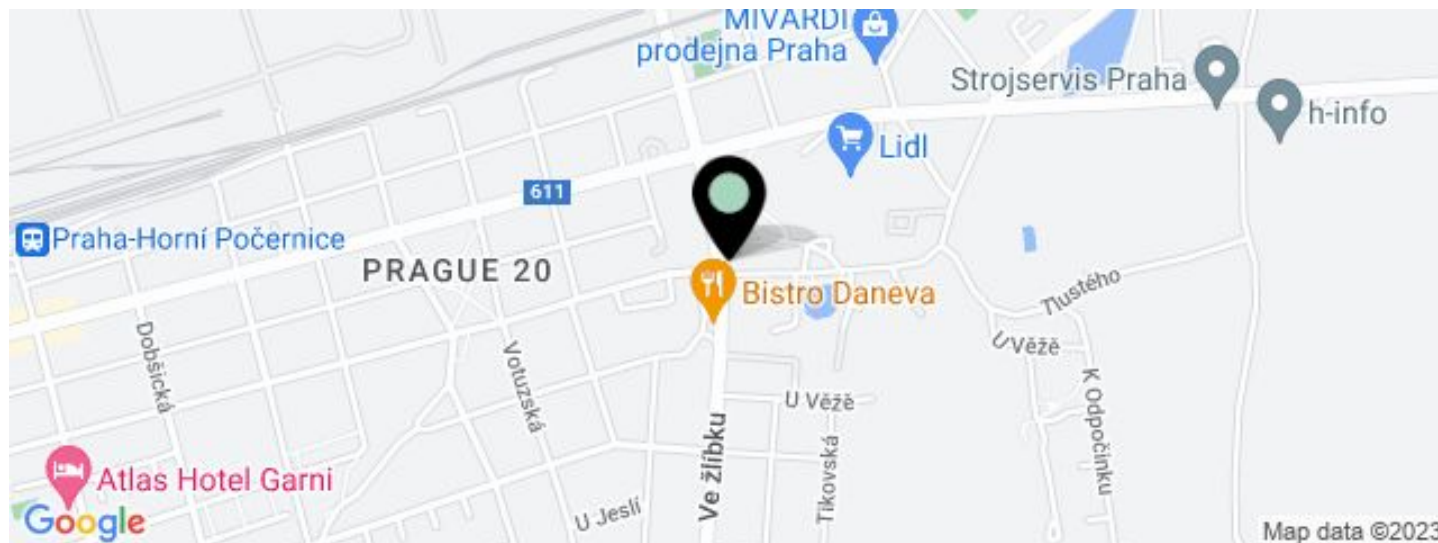




Logistic park

2 863 m², Praha 9, Horní Počernice, Ve Žlíbku

[Ask for price](#)



UNIT	AVAILABLE AREA	SERVICES	PARKING	MONTHLY RENT
Hall B8, groundfloor, available from 3/2025	926 m ²	0 CZK monthly per m ²	Yes	Ask for price



Logistic park

2 863 m², Praha 9, Horní Počernice, Ve Žlábku

Ask for price

Total area	2 863 m ²
Available area for rent	908 m ²
Ceiling height	—
Floor loading capacity	—
Column grid structure	—
Structure	—
PENB	G
Reference number	17499

Storage and logistics complex with a total land area of 17 hectares with a completed area of 55,000 sq.m. of storage facilities. The complex is located in a quiet area of Horní Počernice and is easily accessible from the highways D11 and R10.

Guardhouse, reception, security - camera system in the area (10 cameras) . Road service and maintenance with dedicated maintenance vehicles . Independent waste water treatment facility. Canteen, food shop. Fire protection reservoir, fire main equipment in the area. Technical and maintenance care, 2 dedicated transformer stations, capacity of 3 000 kW. Possibility to provide complete customs and logistics services.



Logistic park

2 863 m², Praha 9, Horní Počernice, Ve Žlábku

Ask for price

