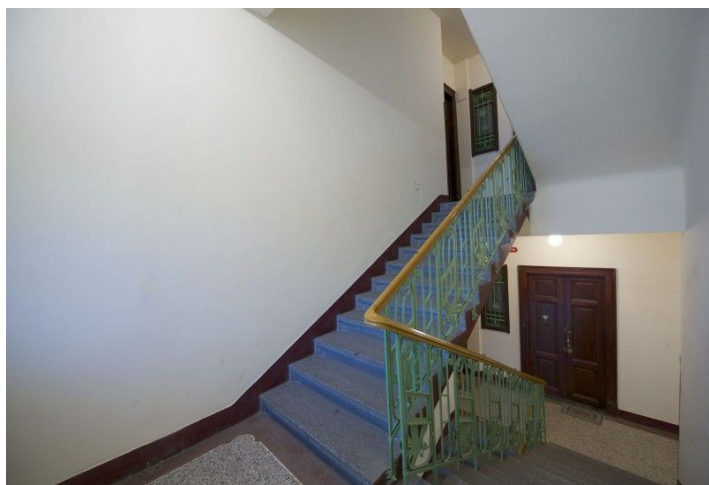
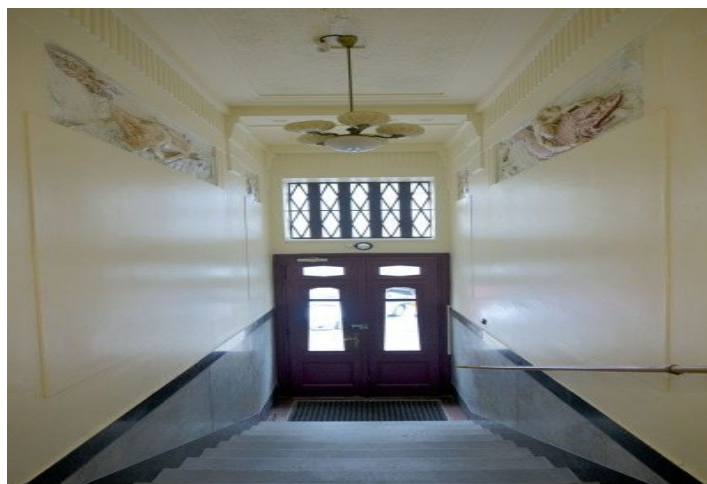




Apartment One-bedroom (2+1)

Sold

62 m², Prague 2, Vinohrady, Mánesova





Apartment One-bedroom (2+1)

Sold62 m², Prague 2, Vinohrady, Mánesova

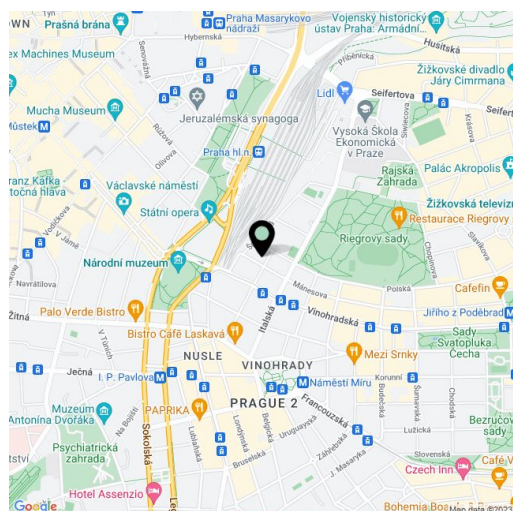
Total area	62 m ²
Parking	-
Cellar	-
PENB	G
Reference number	17508

Traditional bright Vinohrady apartment suitable for reconstruction situated on the 5th floor of a renovated building in a sought-after residential area of Prague 2, close to the Jiřího z Poděbrad metro station.

The interior consists of a living room, a kitchen, a bedroom, a bathroom with bathtub, a toilet, a pantry and an entrance hall. Parquet floors. **The apartment can be connected with the neighboring apartment.**

The apartment is located in an attractive part of Vinohrady close to tram stops and the Riegrovy Sady park. All public amenities within walking distance - schools, shops, cafés and restaurants.

Interior 62.01 m².



* Area of the unit according to the Civil Code. The area consists of the sum total area of the entire unit bounded by perimeter walls.



Apartment One-bedroom (2+1)

Sold

62 m², Prague 2, Vinohrady, Mánesova

