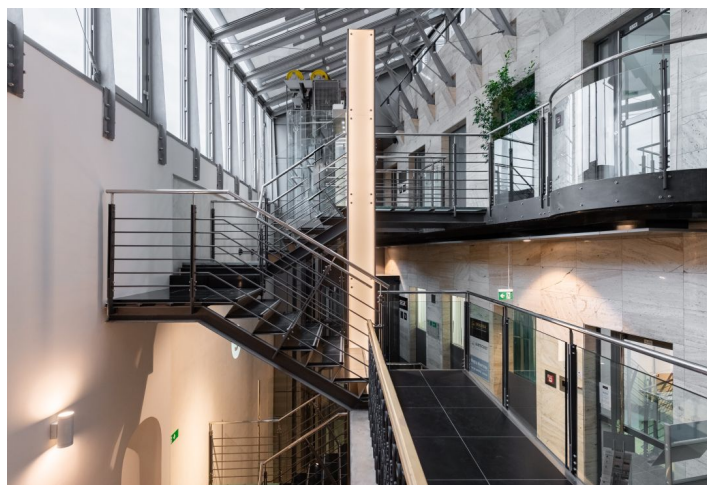
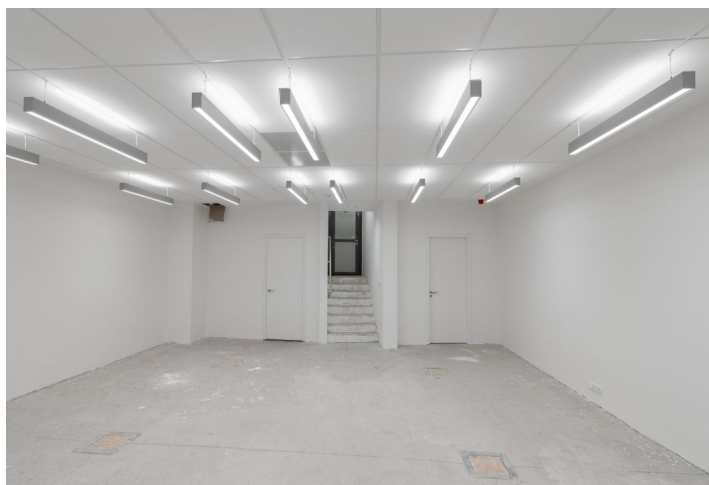




# Office space

Rented

Prague 1, Staré Město, Na Příkopě





## Office space

**Rented**

Prague 1, Staré Město, Na Příkopě

<b>Service price</b>	170 CZK monthly per m <sup>2</sup>
<b>Available area</b>	137 m <sup>2</sup>
<b>Cellar</b>	-
<b>Parking</b>	EUR 180 / pp / month
<b>PENB</b>	D
<b>Reference number</b>	17577

Office space for lease on the 3rd floor. A prestigious location easily accessible by public transportation—the Můstek (lines A, B) and Náměstí Republiky (line B) metro and trams are just a few steps away. The units have been beautifully reconstructed and feature historic stucco decorations and joinery elements. Possibility of 1 parking space for every 150 sq. m of leasable area.

**Features and services:**

24/7 access and reception. Complete with an atrium with modern glass elevators and six galleries, a flexible interior layout, access by magnetic cards, openable windows, suspended ceilings, and fan coils for air conditioning and heating. Parking.

Rental and service charges are listed without VAT. Lessee pays no commission.

