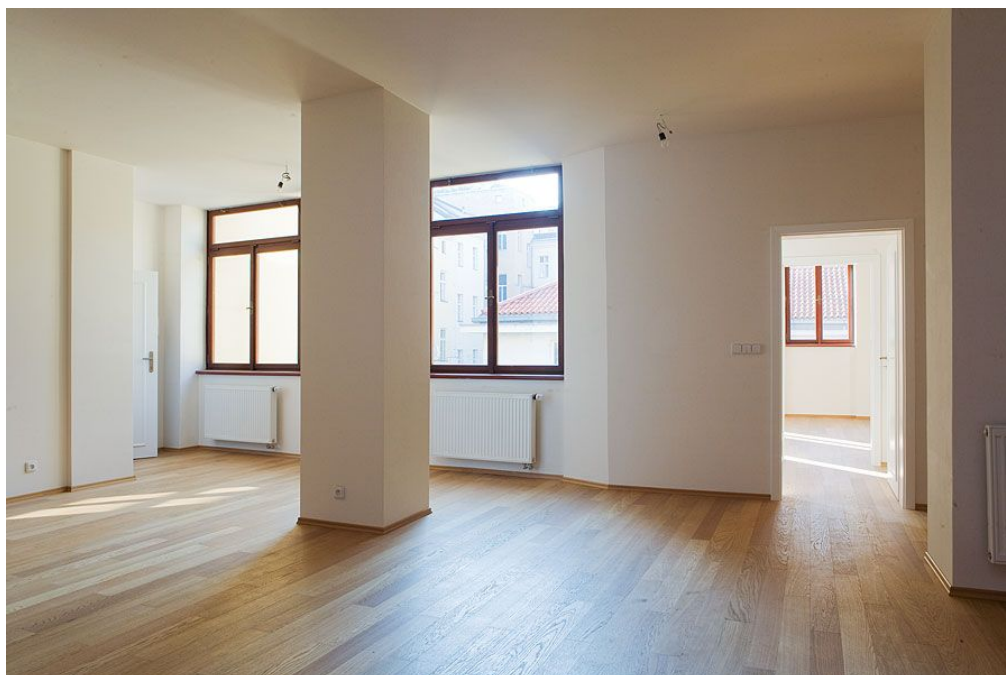




Apartment Two-bedroom (3+kk)

€ 634 224 | CZK 15 671 670

106 m², Prague 1, Nové Město, V Jircharich

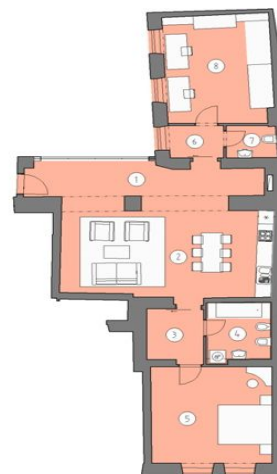


Apartment 2

No.	Room	m ²
1	Entrance hall	14,20
2	Living room and kitchen	34,82
3	Closet	5,07
4	Bathroom with toilet	6,52
5	Bedroom	19,8
6	Hall	5,07
7	Toilet	2,81
8	Bedroom	20,26
	Total m ²	106,61

Byt II. 2

II. místnost	m ²
1 Vstupní hala	14,20
2 Ob. pokoj + kuchyně	34,82
3 Šatna	5,07
4 Koupelna a WC	6,52
5 Ložnice	19,8
6 Chodba	5,07
7 WC	2,81
8 Ložnice	20,26
Celkem m ²	106,61





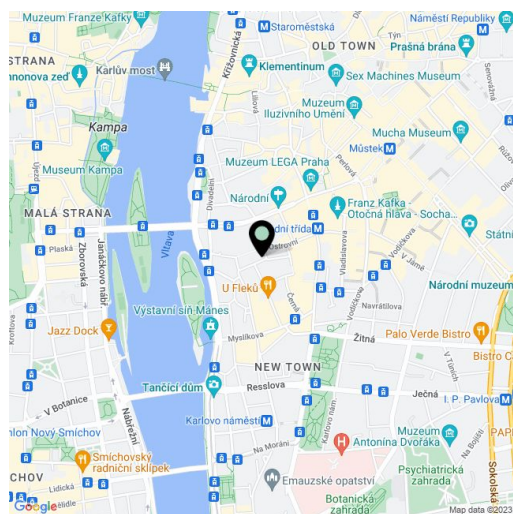
Apartment Two-bedroom (3+kk)

€ 634 224 | CZK 15 671 670

106 m², Prague 1, Nové Město, V Jircharich

Total area	106 m²
Parking	Yes
Cellar	-
PENB	G
Reference number	1761

Bright apartment on the 1st floor of a completely renovated magnificent residence situated a one minute walk from the National Theater provides you with maximum you can ask of a great investment into Prague's residential real estate. Located in the very center of Prague 1 in a surprisingly quiet street, a few steps from Narodni street or Zofin, within easy reach of the Old Town Square and Wenceslas Square. Underground parking is right behind the corner under the New Scene of the National Theater building. The apartment has an open plan entry hall, living, dining and kitchen area with large floor to ceiling glass wall facing a private, quiet courtyard. It further offers two bedrooms, fully appointed bathroom, extra toilet, and walk-in closet. The apartment features modern design, wooden and tile floors throughout, historic replica original wooden doors and windows matching the current technical requirements, preparation for air conditioning, video-intercom, installations for satellite and cable TV, STA, and alarm. Completion January 2008. The purchase price is subject to VAT



* Area of the unit according to the Civil Code. The area consists of the sum total area of the entire unit bounded by perimeter walls.