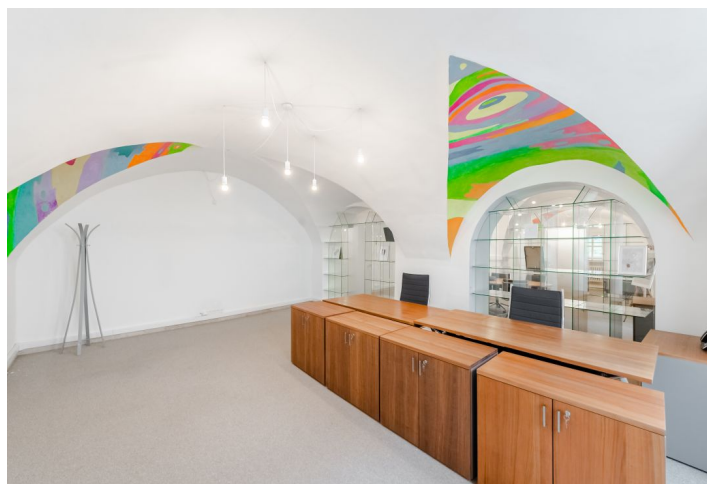




# Office building

Prague 1, Nové Město, Voršilská

Rented





## Office building

Prague 1, Nové Město, Voršilská

Rented

Service price	113 CZK monthly per m <sup>2</sup>
Total building area	372 m <sup>2</sup>
Tenant consumption	—
Parking	-
Parking service charges	—
Parking ratio	—
Certification	—
PENB	G
Reference number	17614

Completely renovated historic building offers office space for lease. The building is located near the National Theatre, a few minutes walk from the metro station Národní třída (line B). Kitchenette, alarm, air conditioning, meeting rooms or 1 parking space are available.

### Location:

Great accessibility by public transport. Close to the tram stop Národní divadlo and metro station Národní třída (line B).

### Features and Services:

Kitchenette  
WC  
Double wooden floors  
Alarm  
Lattices on the windows on the ground floor facing the street  
Air conditioning  
Conference room  
1 parking space

Prices are listed without VAT. Lessee pays no commission.



## Office building

Prague 1, Nové Město, Voršilská

Rented

