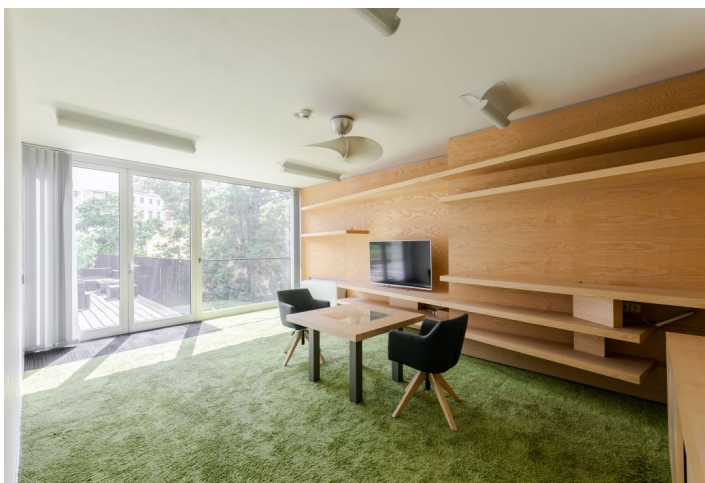




Office building

103 m², Prague 5, Smíchov, Štefánikova

€ 16.00 / m² | CZK 390 / m²

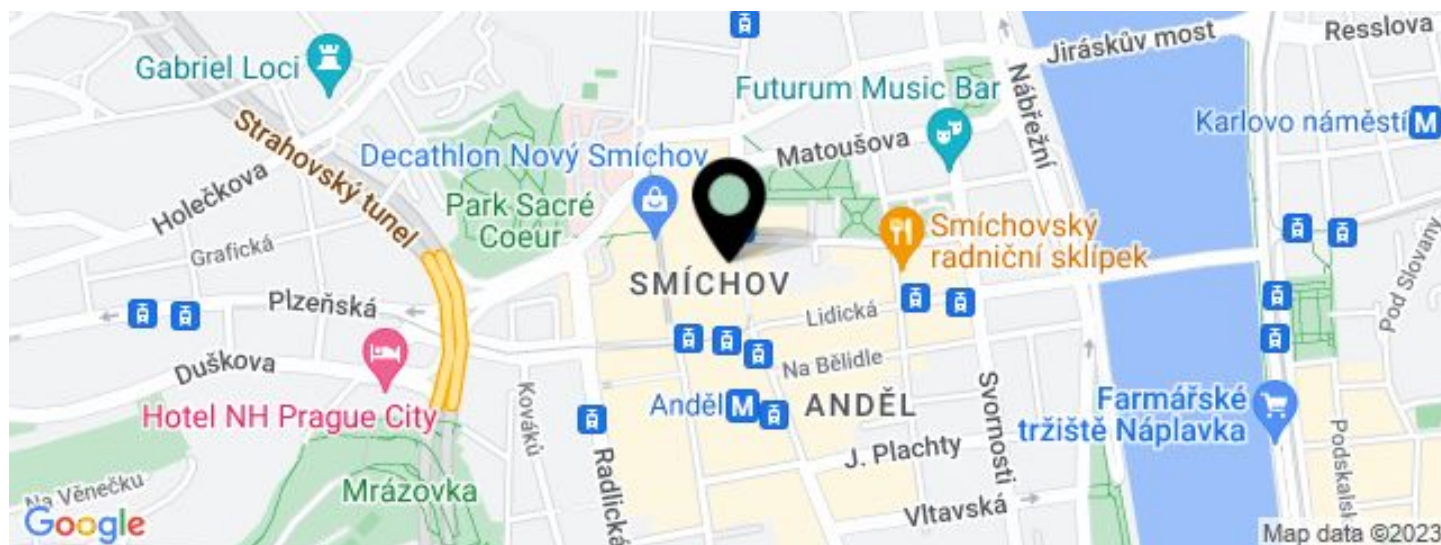




Office building

€ 16.00 / m² | CZK 390 / m²

103 m², Prague 5, Smíchov, Štefánikova



UNIT	AVAILABLE AREA	SERVICES	PARKING	MONTHLY RENT
Office space, 6th floor + terrace	103 m ²	195 CZK monthly per m ²	EUR 120 / ps / month	16 EUR Per m ²



Office building

103 m², Prague 5, Smíchov, Štefánikova

€ 16.00 / m² | CZK 390 / m²

Service price	195 CZK monthly per m ²
Total building area	5 334 m ²
Tenant consumption	—
Parking	120 EUR
Parking service charges	—
Parking ratio	—
Certification	—
PENB	C
Reference number	17653

Administrative building with office space for lease located on the border of Smíchov and Lesser Town. The building not only has an office floor, but also a courtyard, where there is a smaller apartment building.

Location:

Excellent accessibility by car and public transportation—within walking distance of the Anděl metro station (line B), a number of tram and bus stops, and a train station. Easy connections to the Prague Ring Road, the D5 highway to Germany, and the Prague Václav Havel International Airport.

Features and services:

- Central reception
- 24/7 security
- Air-conditioning (fan coil units)
- Openable windows
- Suspended ceilings
- Storage
- Parking spaces

Rental and service charges listed without VAT. Lessee pays no commission.



Office building

103 m², Prague 5, Smíchov, Štefánikova

€ 16.00 / m² | CZK 390 / m²

