



## Apartment Two-bedroom (3+kk)

Sold

100 m<sup>2</sup>, Prague 2, Nusle, Lumírova





## Apartment Two-bedroom (3+kk)

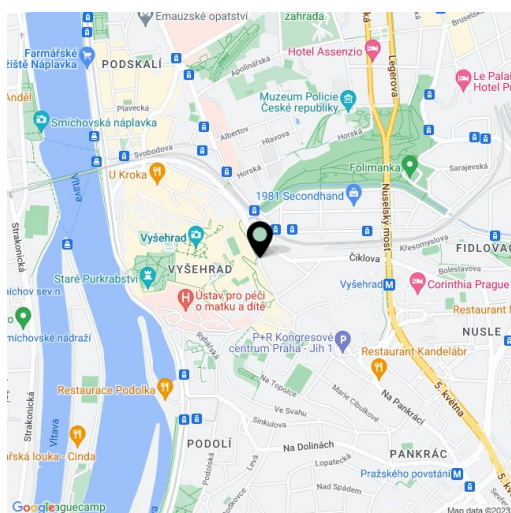
**Sold**100 m<sup>2</sup>, Prague 2, Nusle, Lumírova

Total area	108 m <sup>2</sup>
Floor area*	100 m <sup>2</sup>
Balcony	8 m <sup>2</sup>
Parking	-
Cellar	-
PENB	G
Reference number	17777

**Split-level apartment with a terrace on the 2nd and 3rd floor of a project of complete reconstruction of a classic building in a great location across from Vyšehrad.**

The layout of the lower level will offer a living room with preparation for a kitchen, an entry hall, utility room and a toilet. The upper level will consist of a bedroom with access to the terrace, a children's room with terrace access, a bathroom with a bathtub and a hall. Wooden floors in the main living areas, ceramic tiles in the bathroom, wooden windows. The location offers all public amenities with easy access to the city center thanks to tram lines. Completion planned for spring 2015.

Interior 100 m<sup>2</sup>, terrace 8.5 m<sup>2</sup>.



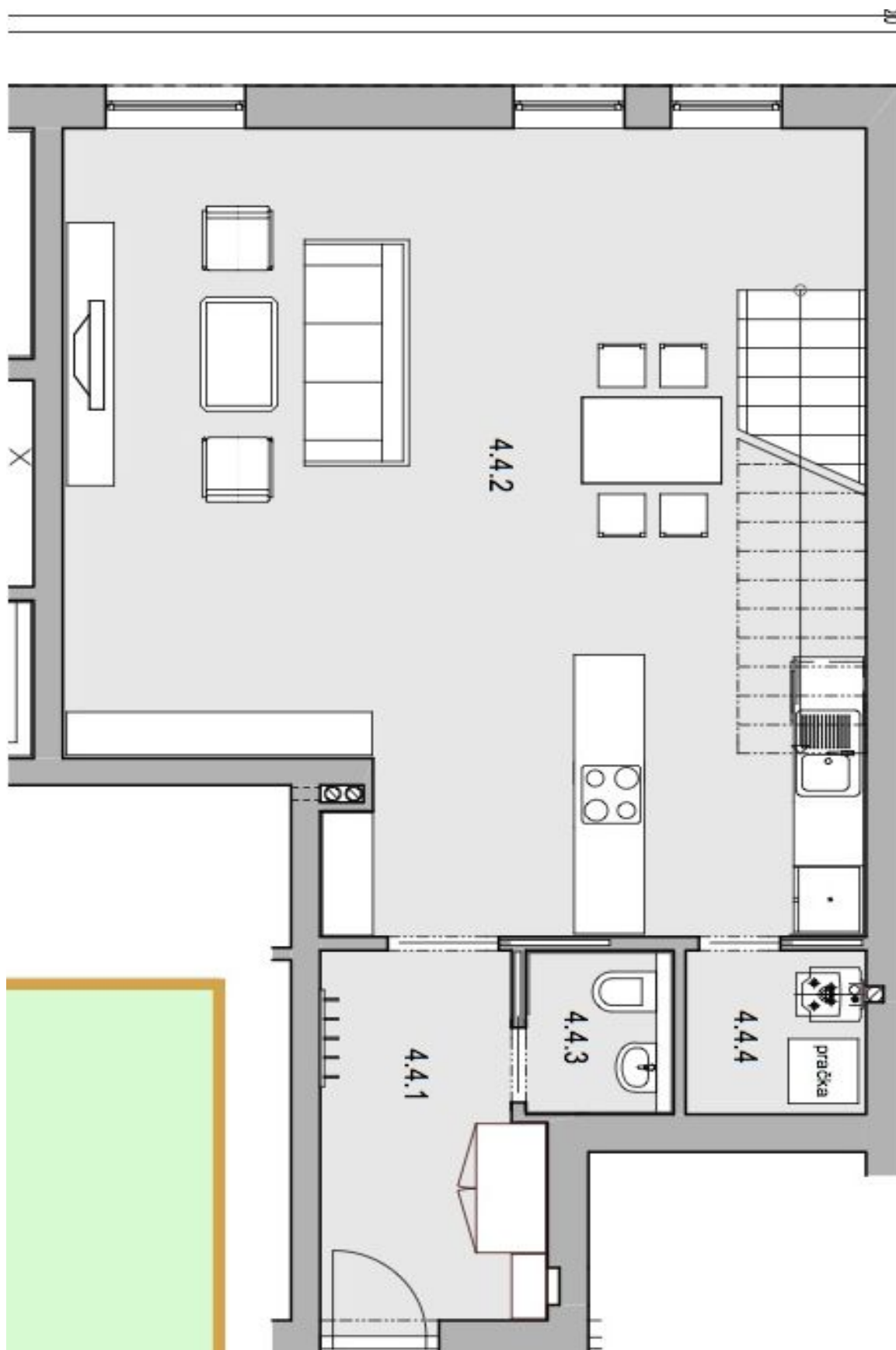
\* Area of the unit according to the Civil Code. The area consists of the sum total area of the entire unit bounded by perimeter walls.



## Apartment Two-bedroom (3+kk)

100 m<sup>2</sup>, Prague 2, Nusle, Lumírova

Sold





## Apartment Two-bedroom (3+kk)

100 m<sup>2</sup>, Prague 2, Nusle, Lumírova

Sold

