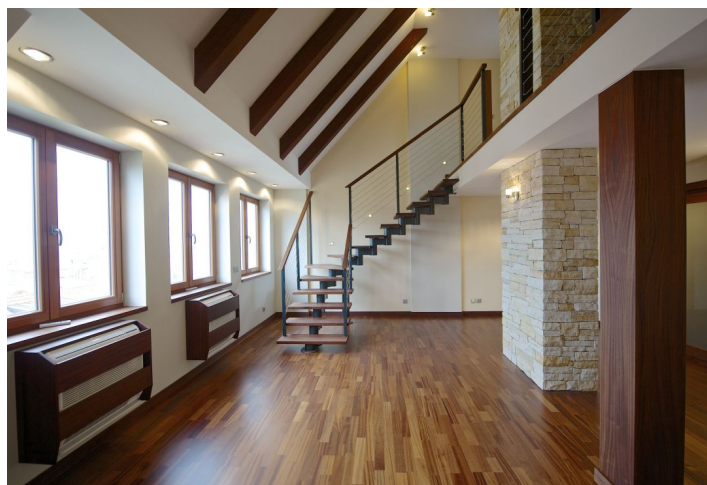




Apartment Three-bedroom (4+kk)

Sold

137 m², Prague 5, Smíchov, Na Václavce





Apartment Three-bedroom (4+kk)

Sold137 m², Prague 5, Smíchov, Na Václavce

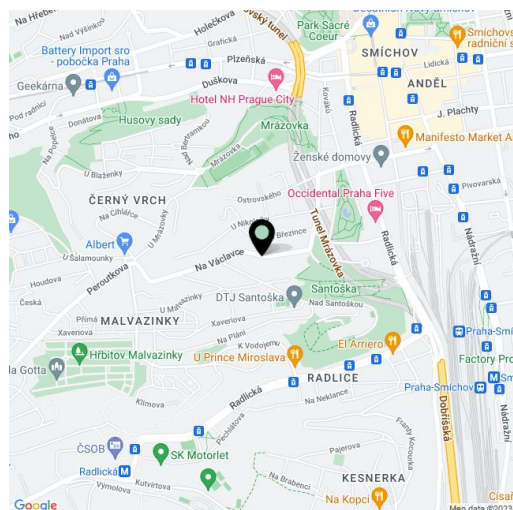
Total area	192 m ²
Floor area*	137 m ²
Terrace	55 m ²
Parking	Yes
Garage	Yes
Cellar	Yes
PENB	G
Reference number	17780

High standard split-level apartment boasting a sauna and roof terrace offering gorgeous views of Prague, situated on the last two floors (4th and 5th) of a building from the 20th century with an elevator, close to Santoška Park and the Nový Smíchov shopping center.

The apartment consists of living space on two floors and a roof terrace. The layout offers an open-plan living room with a kitchen, 3 bedrooms and 2 designer bathrooms with a bathtub and shower stall - one with en-suite sauna. The apartment features modern high quality equipment - Toshiba air-conditioning and heating system, solid mahogany floors and objects in the living area, wooden and roof windows (remote control opening with rain sensor) with outdoor shutters. The interior is characterized by brick and wooden columns and beams on the ceiling in the living area. The terrace has water and electricity connection (possibility to set up a whirlpool). Direct access to the apartment from the elevator. Possibility to purchase a garage parking space on the ground level. Includes a cellar.

The area offers all public amenities, the Anděl metro station and tram lines within walking distance.

Interior 136.68 m², terrace 55 m², cellar 28 m².



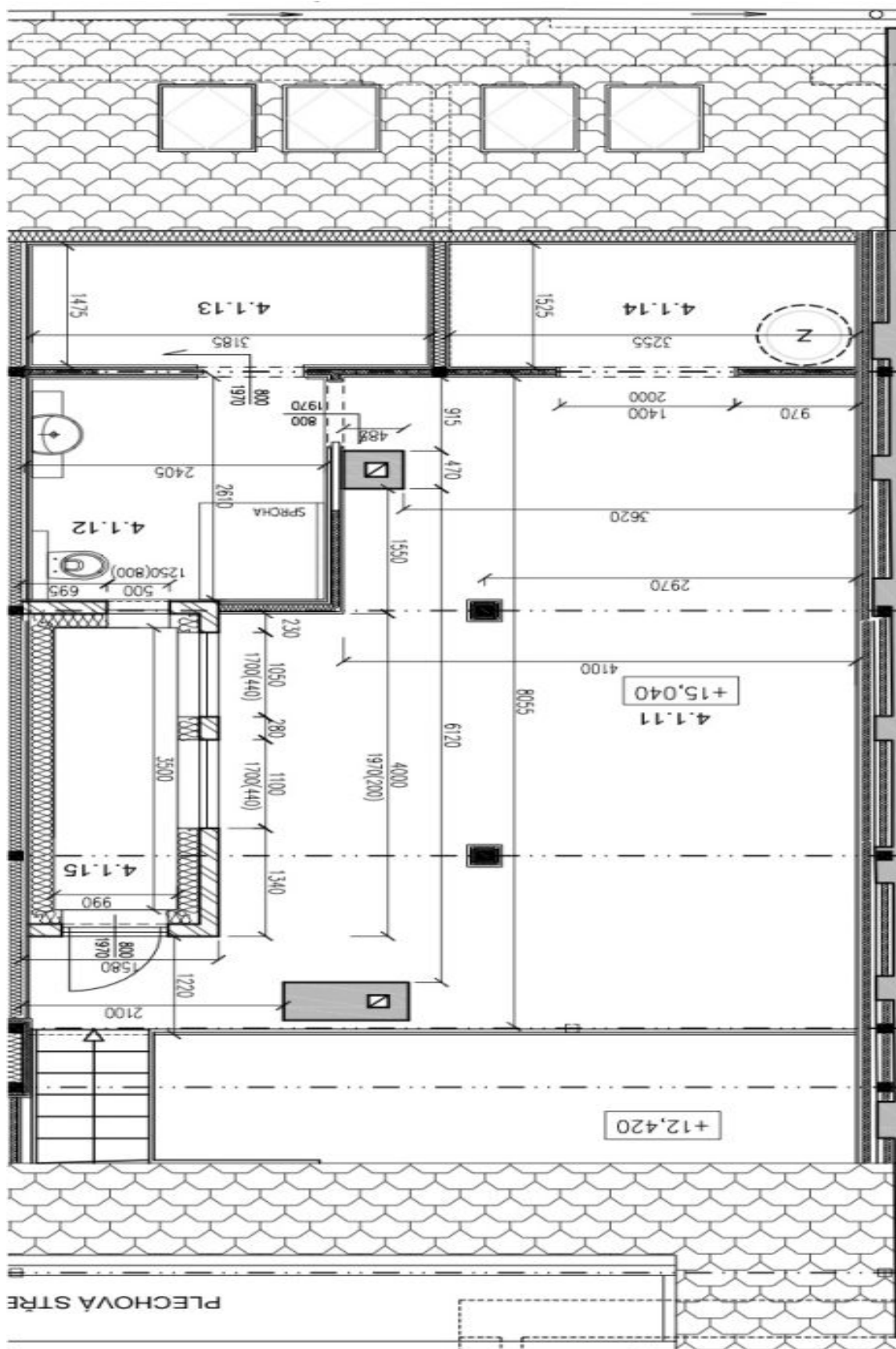
* Area of the unit according to the Civil Code. The area consists of the sum total area of the entire unit bounded by perimeter walls.



Apartment Three-bedroom (4+kk)

Sold

137 m², Prague 5, Smíchov, Na Václavce





Apartment Three-bedroom (4+kk)

Sold

137 m², Prague 5, Smíchov, Na Václavce

