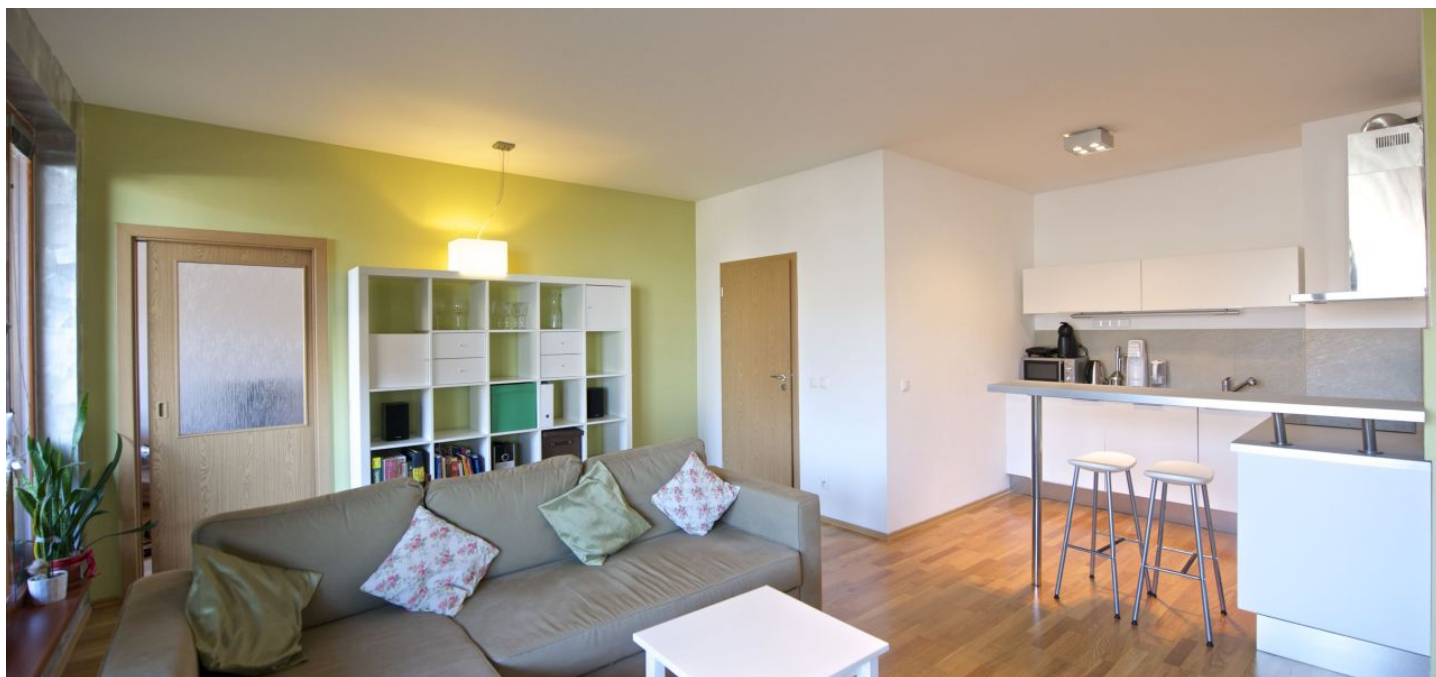




Apartment One-bedroom (2+kk)

Sold

59 m², Prague 7, Holešovice, Varhulíkové





Apartment One-bedroom (2+kk)

Sold59 m², Prague 7, Holešovice, Varhulíkové

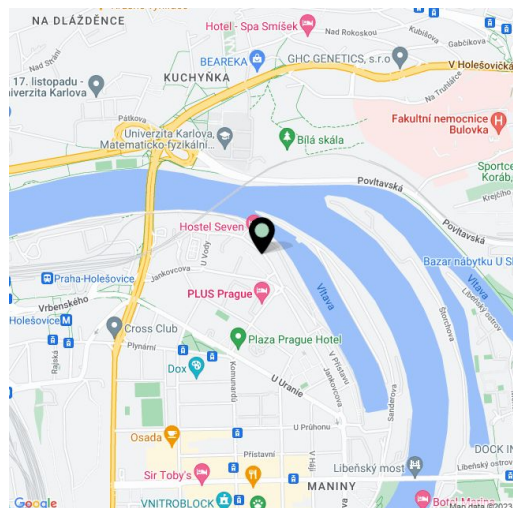
Total area	64 m ²
Floor area*	59 m ²
Balcony	5 m ²
Parking	1 garage parking space included in the purchase price.
Garage	Yes
Cellar	Yes
Service price	2 600 CZK monthly
PENB	G
Reference number	17792

Practically designed bright studio apartment with a balcony boasting a view of the Vltava River in the modern residential Riverloft project, situated in the dynamically developing neighborhood of Holešovice, close to the embankment.

The layout of the 2nd floor apartment offers an entry hall, a living room with kitchen and access to the balcony, a bedroom, closet, bathroom with bathtub and toilet, a separate WC and utility room with space for a washing machine. Wooden floors, security entry door, video entry phone; elevator in the building. The purchase price includes **1 parking space in the underground garage**.

Quiet location with all public amenities, tram stops located just a few steps from the building, 10 minutes to the city center. A bike trail leading all the way to Kralupy nad Vltavou is situated near the building.

Interior 58.4 m², balcony 5.4 m².



* Area of the unit according to the Civil Code. The area consists of the sum total area of the entire unit bounded by perimeter walls.