



# Apartment building

907 m<sup>2</sup>, Prague 2, Nusle, Neklanova

Sold





## Apartment building

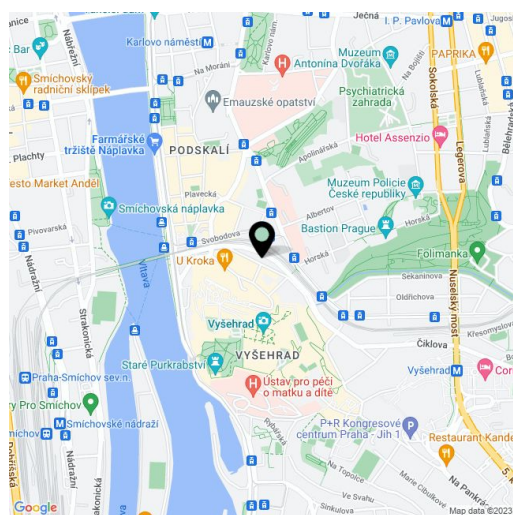
907 m<sup>2</sup>, Prague 2, Nusle, Neklanova

**Sold**

Total gross floor area of the building	907 m <sup>2</sup>
Total net leasable area of the building	907 m <sup>2</sup>
Plot	274 m <sup>2</sup>
Parking	-
Cellar	Yes
PENB	G
Reference number	17796

**Investment opportunity** in the form of an apartment building suitable for complete renovation. The building offers **8** apartments (each floor has 2 flats), with 1 flat currently rented, the rest unoccupied. Located close to Vyšehrad with all public amenities within reach.

Usable area of 907.48 m<sup>2</sup>, current flat area 550 m<sup>2</sup>, land 274 m<sup>2</sup>.

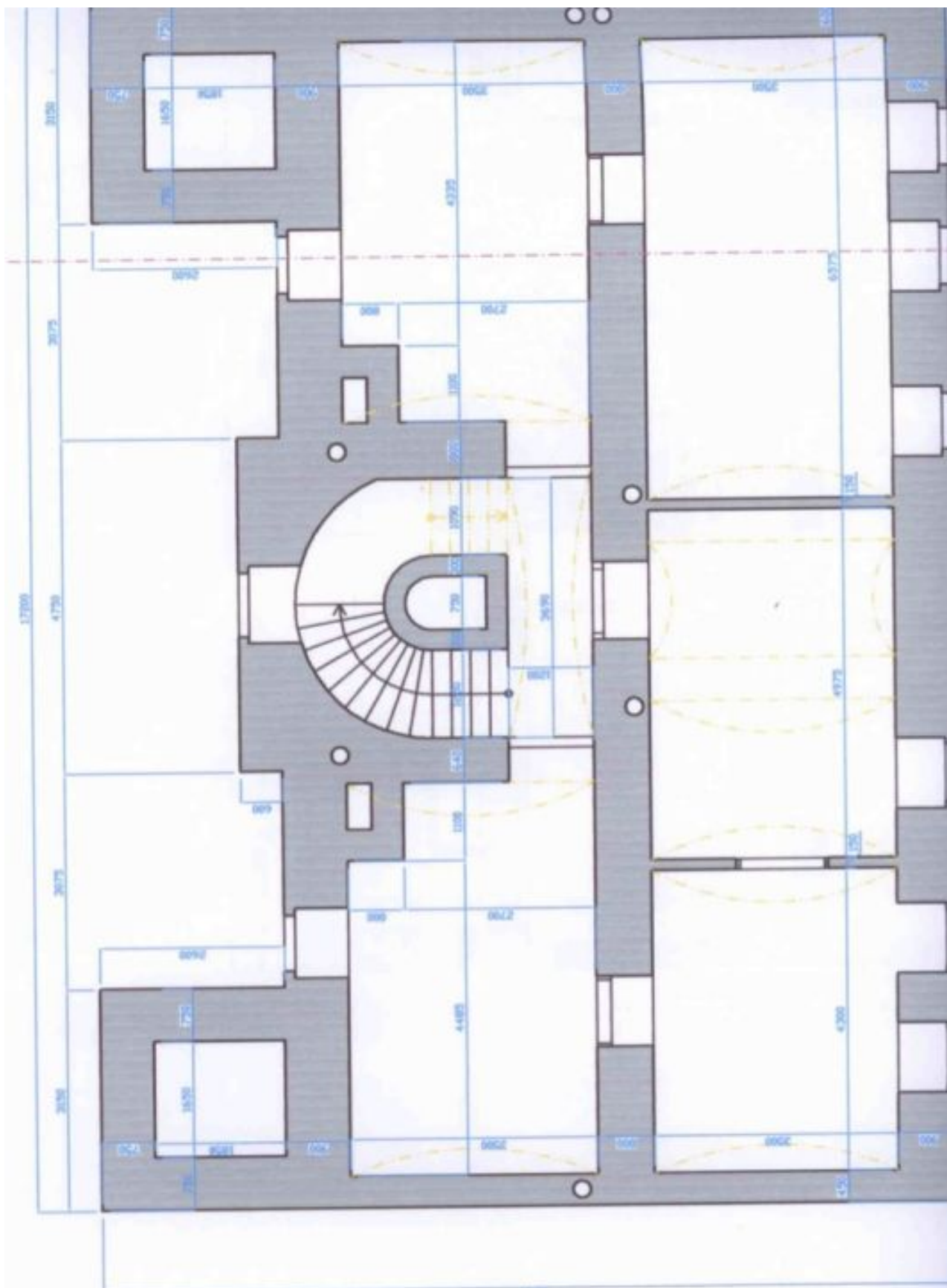




# Apartment building

907 m<sup>2</sup>, Prague 2, Nusle, Neklanova

**Sold**

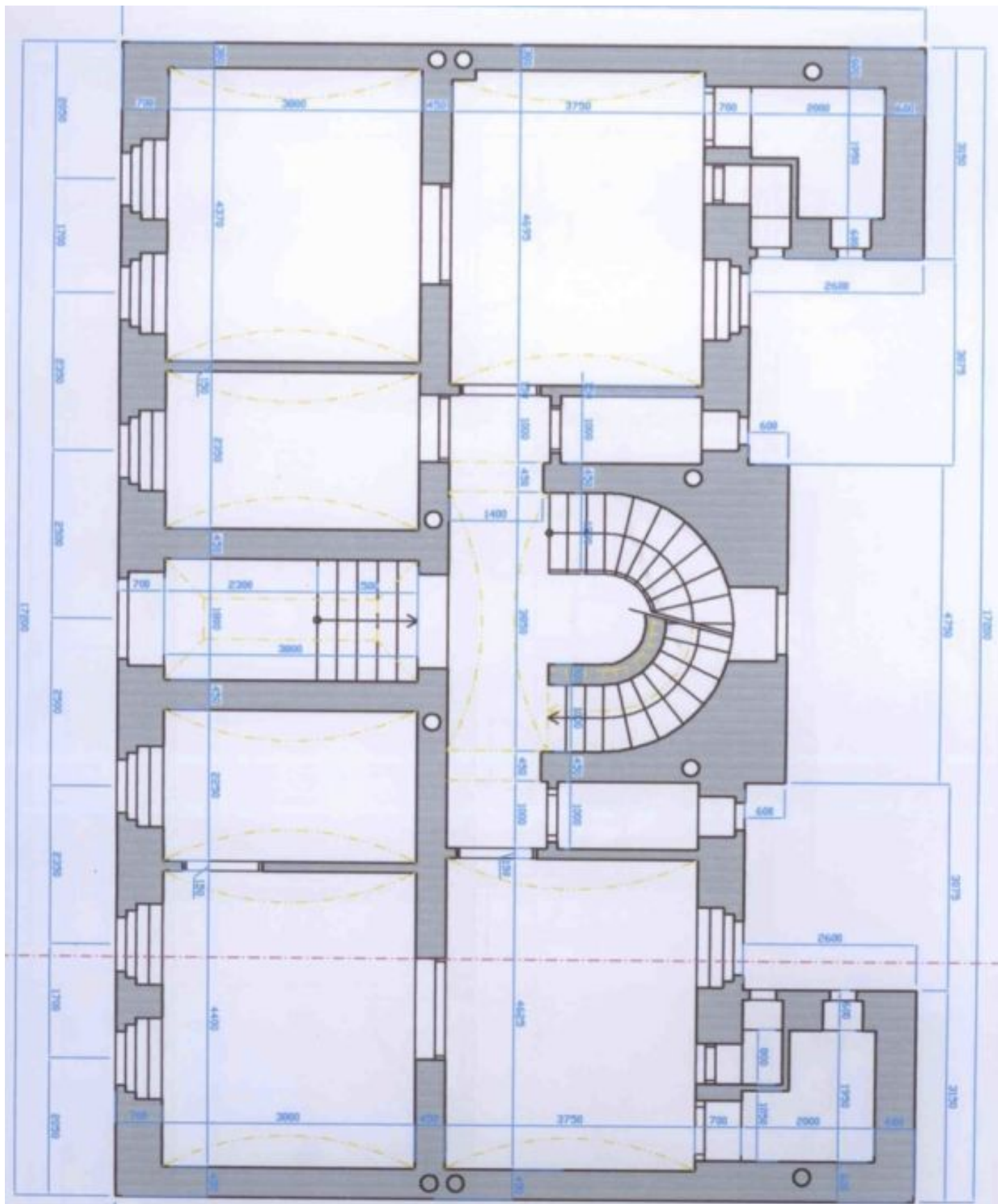




# Apartment building

907 m<sup>2</sup>, Prague 2, Nusle, Neklanova

Sold

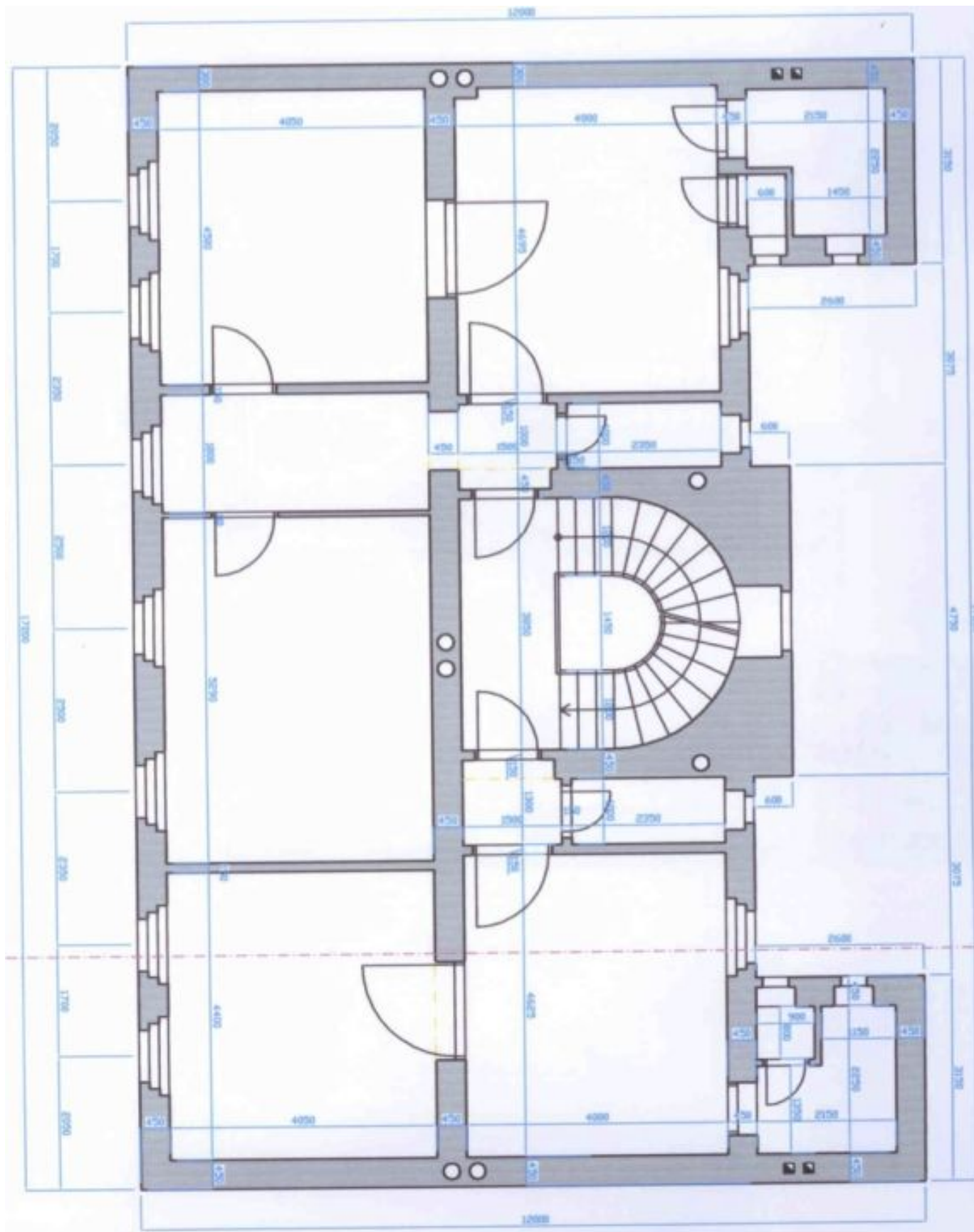




# Apartment building

907 m<sup>2</sup>, Prague 2, Nusle, Neklanova

**Sold**

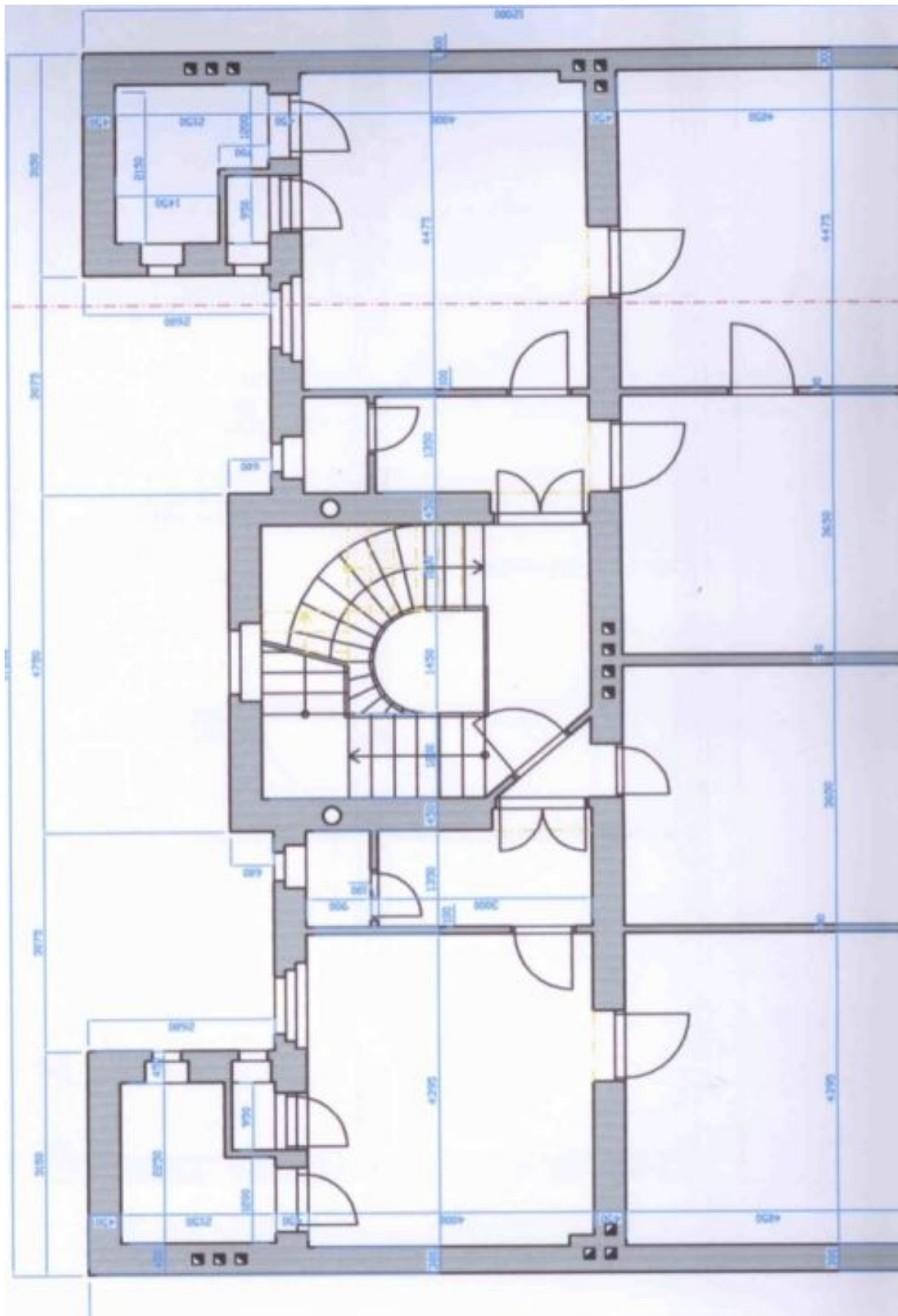




# Apartment building

907 m<sup>2</sup>, Prague 2, Nusle, Neklanova

**Sold**





# Apartment building

907 m<sup>2</sup>, Prague 2, Nusle, Neklanova

**Sold**

