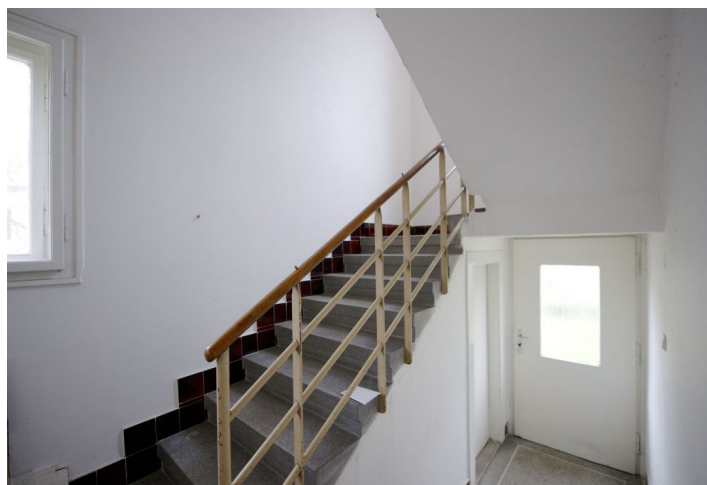




House Five-bedroom (6+1)

245 m², Prague 3, Žižkov, Jilmová

Sold





House Five-bedroom (6+1)

Sold245 m², Prague 3, Žižkov, Jilmová

Plot	739 m ²
Garden	253 m ²
Parking	-
Cellar	Yes
PENB	G
Reference number	17806

Family house from the 1930s situated in a residential neighborhood near Židovské pece park in Prague 3 and 300 m from a tram stop.

The house is suitable for a complete reconstruction. Currently it is divided into 3 separate apartment units: a two-bedroom ground floor unit, a two-bedroom first floor unit and a one-bedroom attic unit. The whole house can also be used with small adjustments as a family villa or the current layout can be used as a house for multiple generations. Great residential location and a view of a neighboring park, quiet area with good public amenities: a pre-school, children's playground, grocery store, restaurants, etc..

Interior 245 m², garden 253 m², plot 339 m².

