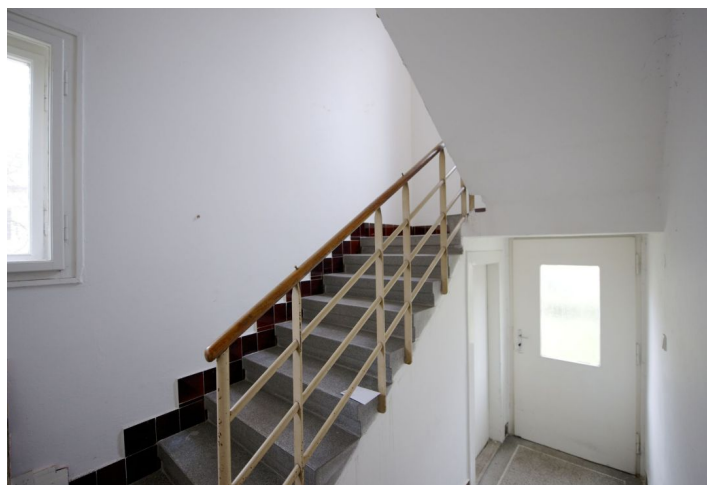




Apartment Two-bedroom (3+1)

Sold

82 m², Prague 3, Žižkov, Jilmová





Apartment Two-bedroom (3+1)

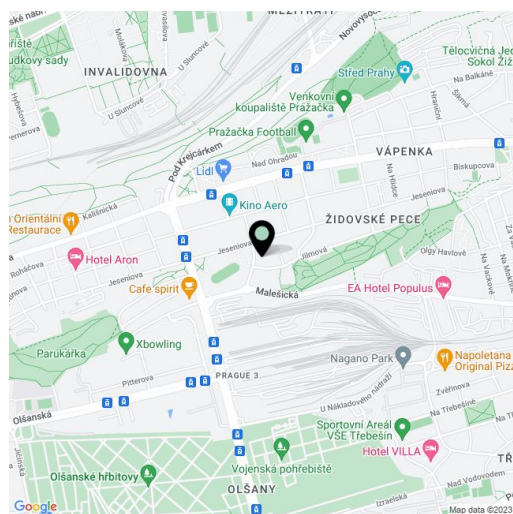
Sold82 m², Prague 3, Žižkov, Jilmová

Total area	82 m ²
Parking	-
Cellar	Yes
PENB	G
Reference number	17807

Three-bedroom apartment on the 2nd floor of a family house from the 1930s situated in a residential neighborhood near Židovské pece park in Prague 3 and 300 m from a tram stop.

The house is suitable for a complete reconstruction. Currently it is divided into 3 separate apartment units. The future owner can use the garden (253 m²). Great residential location and a view of a neighboring park, quiet area with good public amenities: a pre-school, children's playground, grocery store, restaurants, etc..

Interior 81.6 m².



* Area of the unit according to the Civil Code. The area consists of the sum total area of the entire unit bounded by perimeter walls.