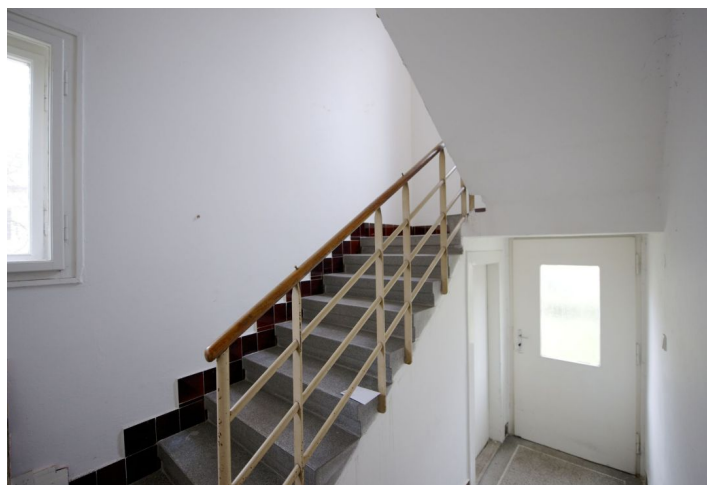




Apartment Two-bedroom (3+1)

Sold

82 m², Praha 3, Žižkov, Jilmová





Apartment Two-bedroom (3+1)

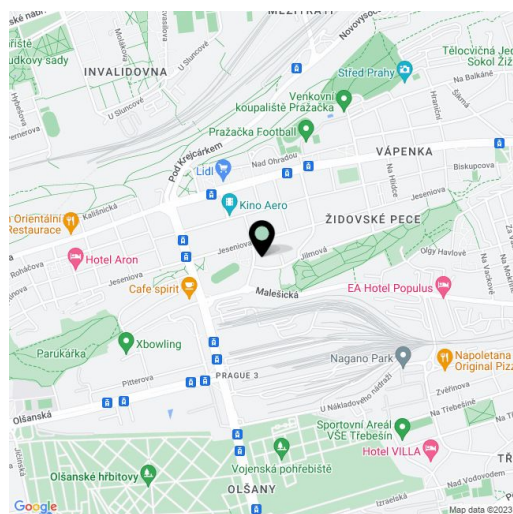
Sold82 m², Praha 3, Žižkov, Jilmová

| | |
|------------------|-------------------|
| Total area | 82 m ² |
| Parking | - |
| Cellar | Yes |
| PENB | G |
| Reference number | 17809 |

Three-bedroom attic apartment in a family house from the 1930s situated in a residential neighborhood near Židovské pece park in Prague 3 and 300 m from a tram stop.

The house is suitable for a complete reconstruction. Currently it is divided into 3 separate apartment units. The future owner can use the garden (253 m²). Great residential location and a view of a neighboring park, quiet area with good public amenities: a pre-school, children's playground, grocery store, restaurants, etc..

Interior 81.6 m².



* Area of the unit according to the Civil Code. The area consists of the sum total area of the entire unit bounded by perimeter walls.