



## House Four-bedroom (5+1)

Sold

212 m<sup>2</sup>, Praha-západ, Statenice, Zelená





## House Four-bedroom (5+1)

**Sold**212 m<sup>2</sup>, Praha-západ, Statenice, Zelená

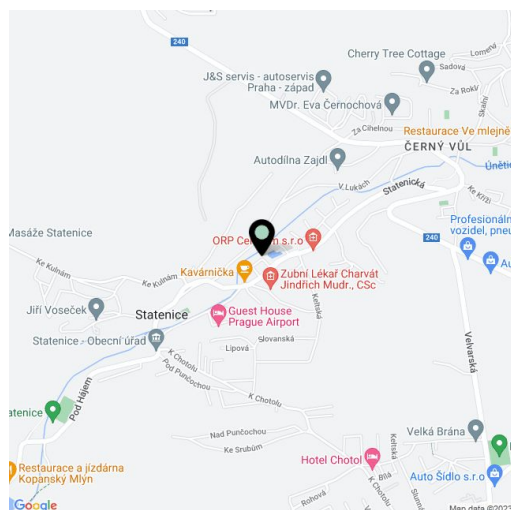
Total area	212 m <sup>2</sup>
Plot	165 m <sup>2</sup>
Foot print	88 m <sup>2</sup>
Garden	77 m <sup>2</sup>
Floor area	196 m <sup>2</sup>
Terrace	16 m <sup>2</sup>
Parking	Yes
Garage	Yes
Cellar	-
PENB	G
Reference number	17875

**Family row house with a garden in the unique Statenický Mlýn residential project in the Únětický potok Valley, situated just 15 minutes by car from the center of Prague.**

This four-bedroom house has three floors. The ground floor offers a spacious kitchen equipped with quality built-in Siemens appliances, a large dining room, utility room, a WC and another utility room. The kitchen has access to the terrace and a garden. The first floor features a living room with large windows providing an abundance of light and also a beautiful view of the pond. Also on this floor are 2 bedrooms and a bathroom. The last floor includes a study with terrace with a view of the pond, a bedroom with an ensuite bathroom and terrace facing the garden. **Part of the house functions as the garage, while** another parking space is available in front of the house.

There are wooden oak floors in the entire house, wooden Euro windows, built-in wardrobes, gas boiler. The property has a camera system with security guard. The residents have all amenities available, such as a Žabka grocery store, fitness center (free of charge only for residents), a playground, a kindergarten as well as a nearby international school. Excellent access to the Václav Havel airport and to the Prague city center - 15 minutes by car to the Dejvická metro station. Close to a bus stop with regular service to Prague.

Interior 196.09 m<sup>2</sup>, terrace 16.02 m<sup>2</sup>, garden 77 m<sup>2</sup>, foot print 88 m<sup>2</sup>, plot 165 m<sup>2</sup>.

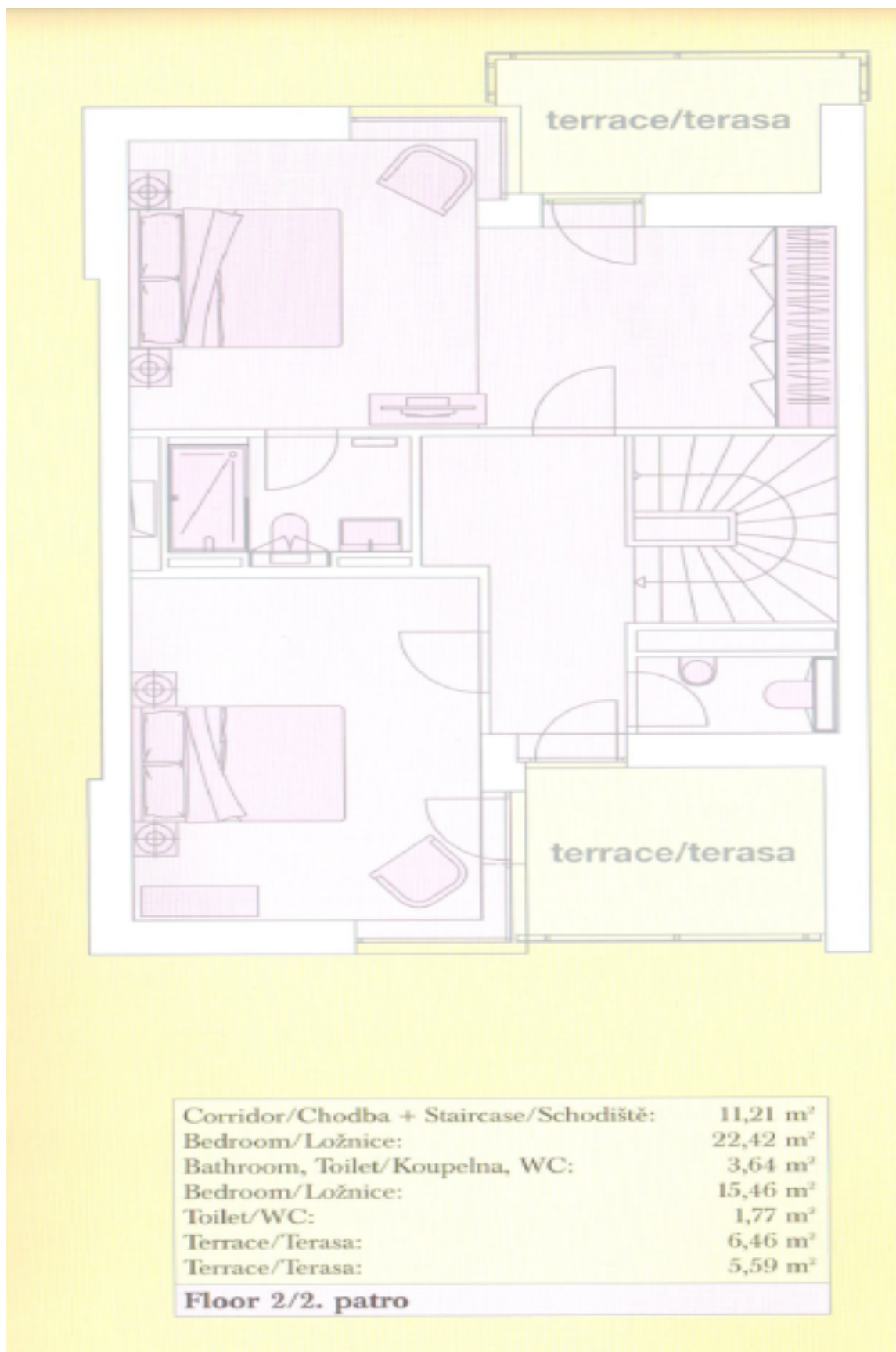




## House Four-bedroom (5+1)

212 m<sup>2</sup>, Praha-západ, Statenice, Zelená

Sold

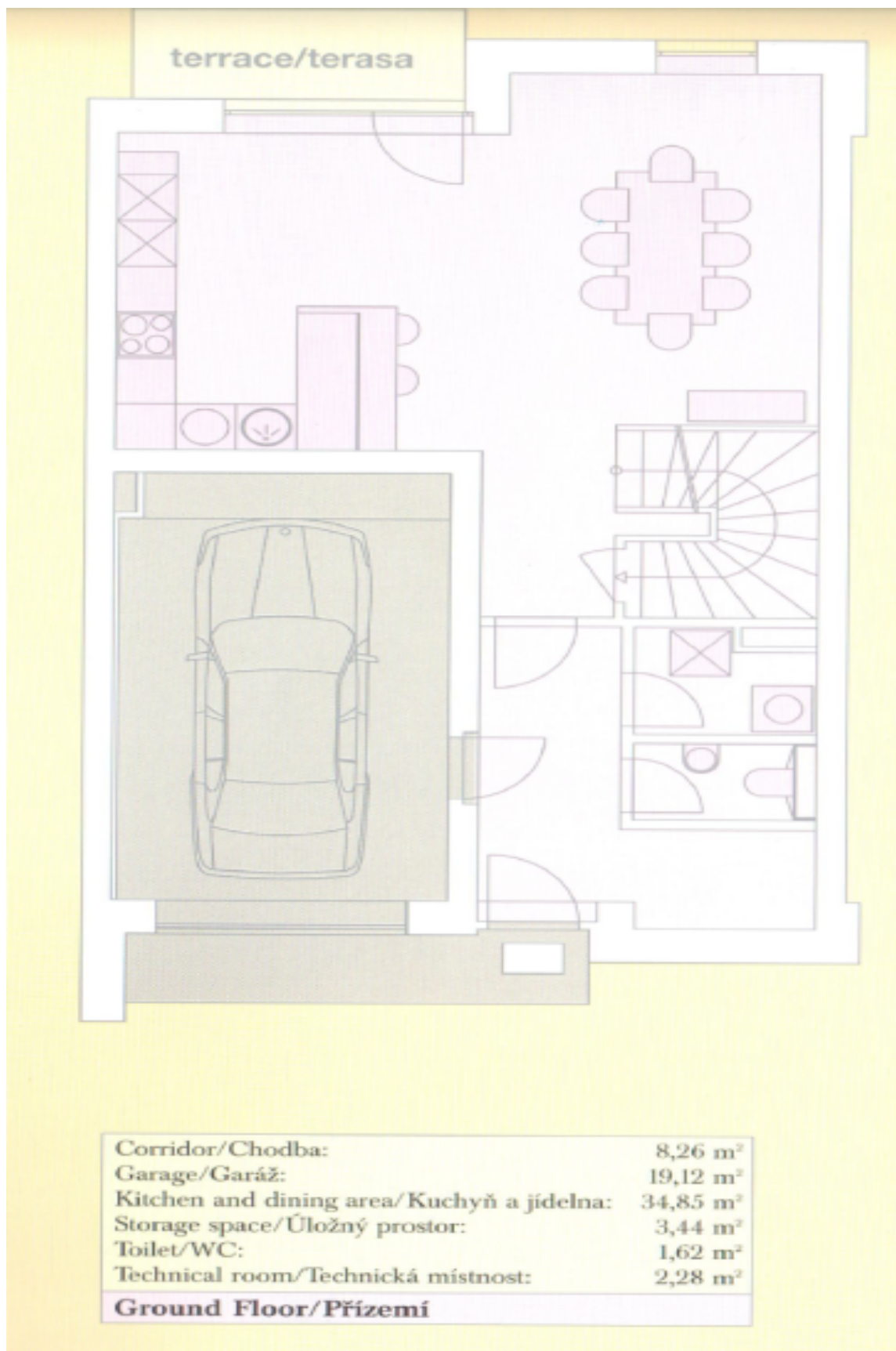




## House Four-bedroom (5+1)

212 m<sup>2</sup>, Praha-západ, Statenice, Zelená

Sold





## House Four-bedroom (5+1)

212 m<sup>2</sup>, Praha-západ, Statenice, Zelená

**Sold**

