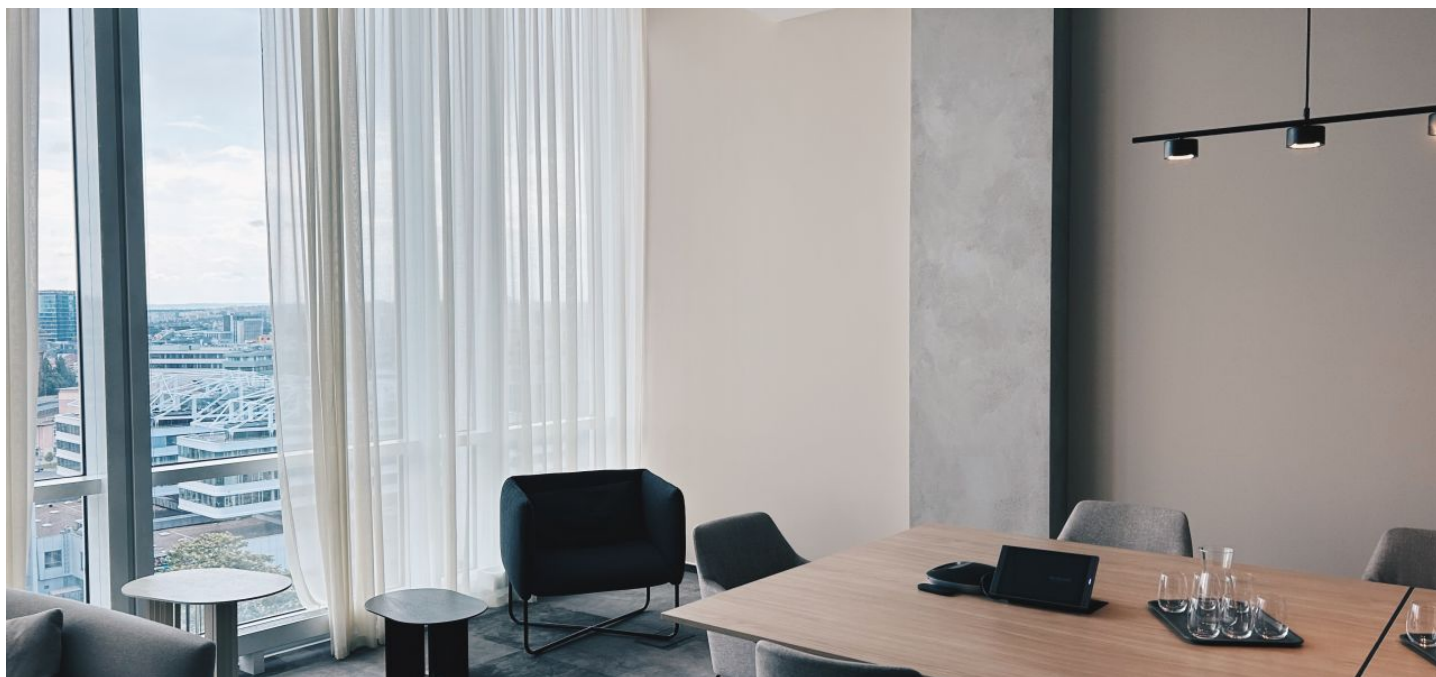




## Office space

€ 15.50 - 23.00 / m<sup>2</sup> | CZK 391 - 579 / m<sup>2</sup>

Prague 4, Nusle, Hvězdova



**Office space**

Prague 4, Nusle, Hvězdova

**€ 15.50 - 23.00 / m<sup>2</sup> | CZK 391 - 579 / m<sup>2</sup>**

<b>Service price</b>	185 CZK monthly per m <sup>2</sup>
<b>Available area</b>	135 m <sup>2</sup>
<b>Cellar</b>	-
<b>Parking</b>	EUR 130 / ps / month
<b>PENB</b>	G
<b>Reference number</b>	17913

Office premises for lease on the 11th floor of a modern administrative building, with amazing views of Prague and its vicinity.

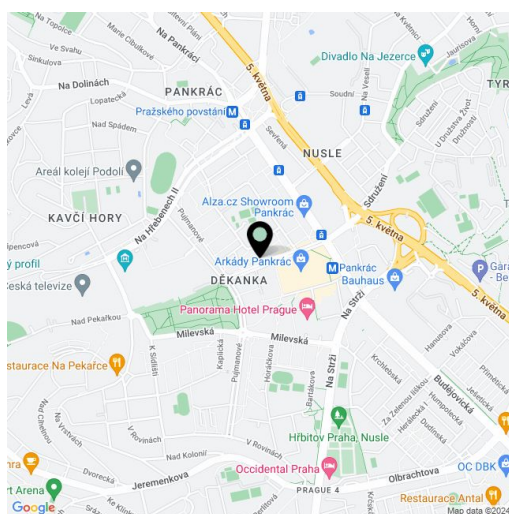
**Location:**

Building is situated in developing administrative area in Prague 4, close to Pankrác metro station (line C). Bus and tram stops are located in walking distance. Direct access to the city ring, conveniently connected to the D1 highway (Prague-Brno-Vienna).

**Features and Services:**

- A class office space, flexible layout (open space and partitioned offices)
- Fully air-conditioned
- Sprinklers
- Attractive reception area
- 18 elevators including 15 high-speed lifts
- Card access system for entrance
- ESS, CCTV
- 24-hour security building
- Modern system of building management and operation
- Luxury restaurant and conference rooms on the top floor of the building
- Canteen and coffee shop for employees
- Fibre optic backbone with possibility to install telecommunication equipment on building roof
- Visitors parking and car wash in garages
- Indoor parking 795 spaces

Rental and service charges listed without VAT. Lessee pays no commission.

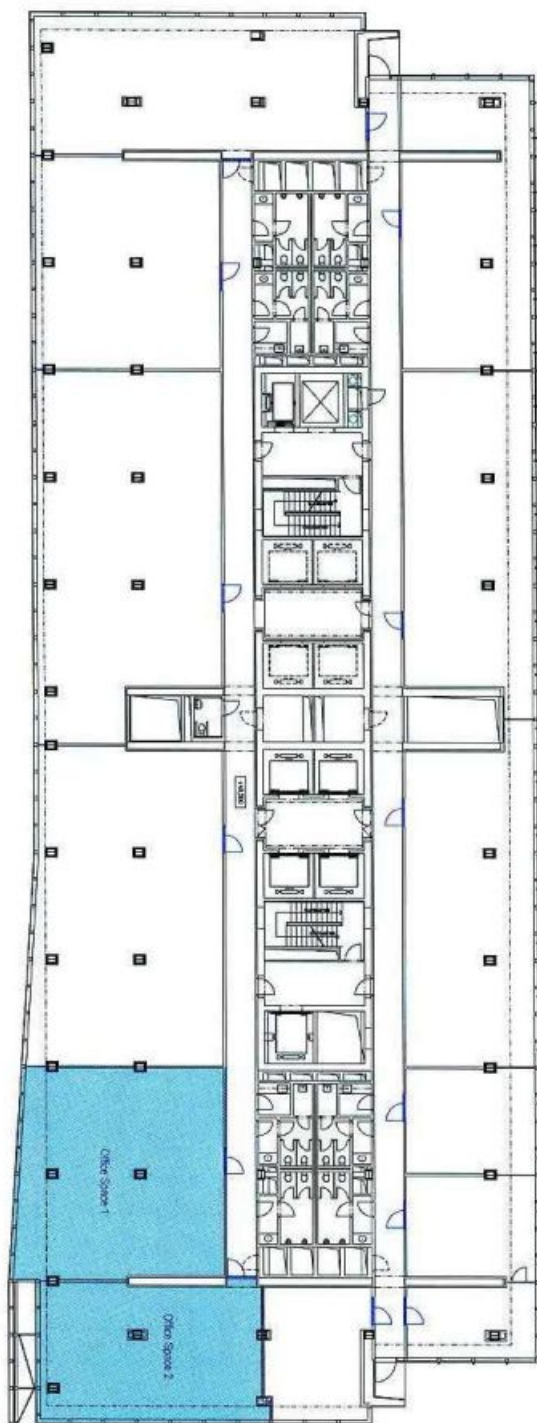




# Office space

€ 15.50 - 23.00 / m<sup>2</sup> | CZK 391 - 579 / m<sup>2</sup>

Prague 4, Nusle, Hvězdova



LEGEND:  
office space