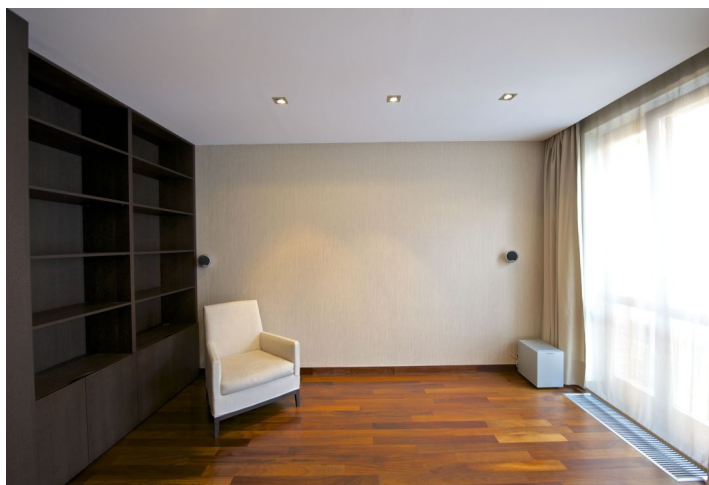
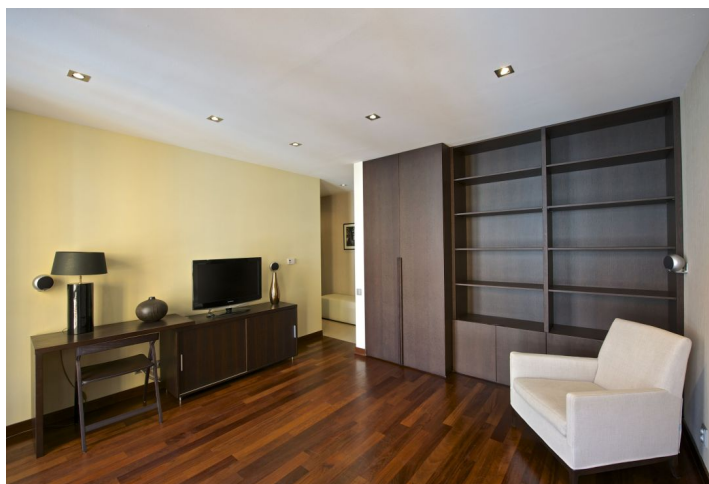




Apartment Studio (1+kk)

31 m², Praha 10, Vršovice, Kozácká

Sold





Apartment Studio (1+kk)

Sold31 m², Praha 10, Vršovice, Kozácká

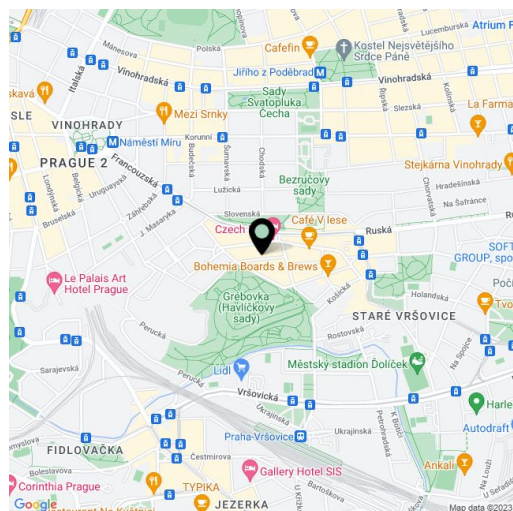
Total area	31 m ²
Parking	1 garage parking space included
Garage	Yes
Cellar	-
PENB	G
Reference number	17943

High-standard studio apartment situated on the 2nd floor of a renovated building in a popular residential area near Havlíčkovy Sady Park and an array of restaurants and cafés. The apartment is suitable as an investment to use for short term rentals or for personal use during business trips to Prague.

The layout of the apartment offers a main living room with French windows with outdoor railings, an entry hall with a fully-equipped kitchen corner, and a bathroom with a bathtub and toilet. The equipment includes wooden floors in the main living area, marble in the bathroom and in the hall, spotlights, built-in wardrobes and a gas boiler. **The purchase price includes one garage parking space.**

The apartment is located in a quiet neighborhood in Vršovice with all public amenities and fast access to the center - close to a tram stop and Náměstí Míru metro station.

Interior 31.4 m², cellar 3 m².



* Area of the unit according to the Civil Code. The area consists of the sum total area of the entire unit bounded by perimeter walls.



Apartment Studio (1+kk)

31 m², Praha 10, Vršovice, Kozácká

Sold

