



House Six-bedroom (7+1)

300 m², Prague 9, Klánovice, Trávnícká

Sold





House Six-bedroom (7+1)

300 m², Prague 9, Klánovice, Trávnícká

Sold

Plot	766 m ²
Foot print	168 m ²
Parking	Yes
Garage	Yes
Cellar	-
PENB	G
Reference number	17990

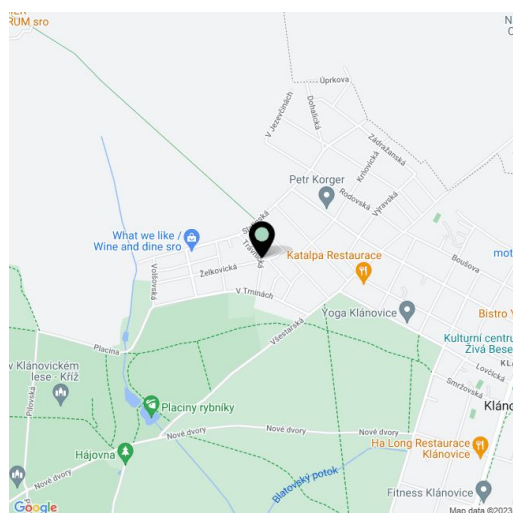
This newly built family house that is complete with a garden is situated close to a forest in the protected area of Klánovice, a most sought after residential location. The house is suitable for multigenerational living, but also as a studio, a medical facility or a company headquarters.

This spacious house features high ceilings (3.57 m) on the ground floor and has two separate entrances. The ground floor is completed while the first floor with classic as well as roof windows will be finished according to the client's wishes. The lower part of the house consists of an open concept living room with a fireplace, a dining room and a kitchen, a bedroom, a spacious bathroom and a hall with a staircase leading to the first floor, and entry to a garage.

The ground floor equipment includes large wooden windows offering abundance of natural light, tiles in the bathroom, a sliding glass door. The house has gas heating.

The house is situated in the attractive part of Klánovice providing public amenities as well as opportunities for activities such as walks through the forest, golf, tennis, horseback riding or roller blading. Distance to the center of Prague - 20 minutes by train.

Usable area 300 m², foot print 168 m², plot 766 m².

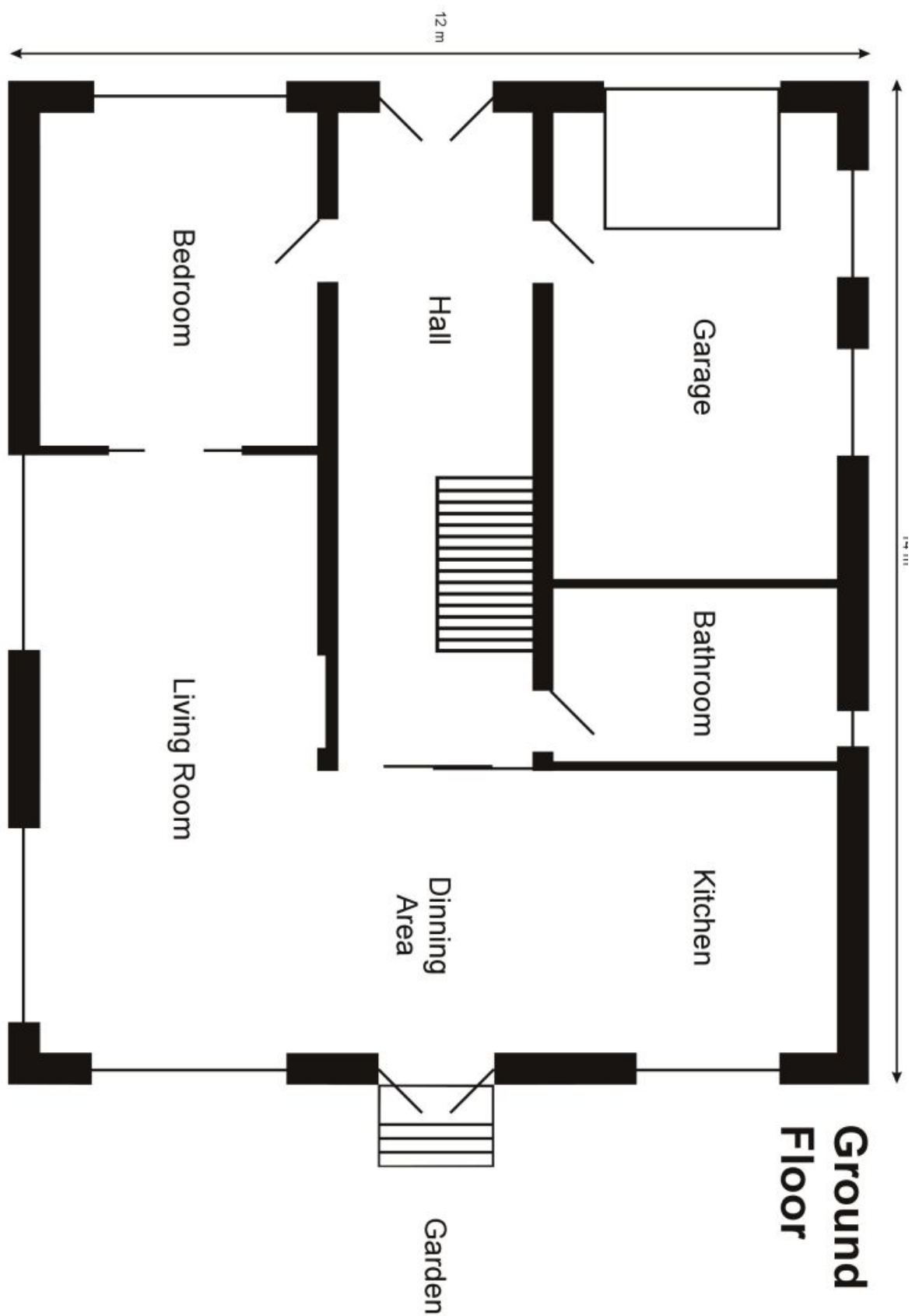




House Six-bedroom (7+1)

300 m², Prague 9, Klánovice, Trávnícká

Sold

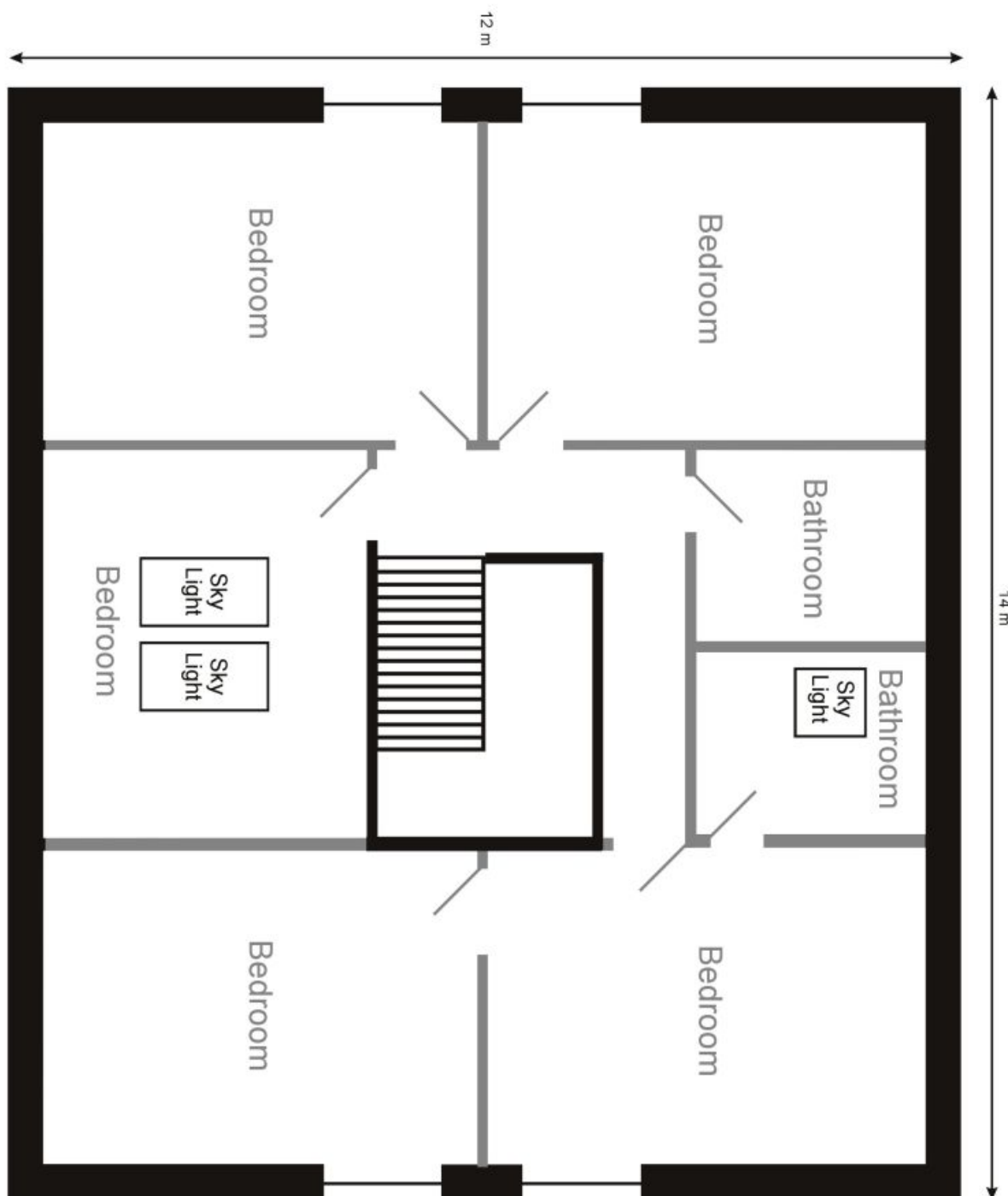




House Six-bedroom (7+1)

300 m², Prague 9, Klánovice, Trávnícká

Sold



1st
FLOOR
- possible
arrangement