



Apartment building

Sold

565 m², Prague 6, Bubeneč, Ve Struhách





Apartment building

565 m², Prague 6, Bubeneč, Ve Struhách

Sold

Total gross floor area of the building	599 m ²
Total net leasable area of the building	565 m ²
Plot	348 m ²
Foot print	167 m ²
Parking	-
Terrace	34 m ²
Cellar	Yes
PENB	G
Reference number	17993

Functionalist, partly renovated apartment building from the 1940s for sale, in the sought-after area of Bubeneč, Prague 6. The four-story building with new terraces offers a total of 10 apartment units.

Basement - 2 apartment units (a one-bedroom apt. 44.74 m² on the left side, reconstructed in 2013 and a studio 25.64 m² on the right side, in the original state).

Ground floor - 2 apartments (a two-bedroom apt. 53.96 m² on the left side, reconstructed in 2012 and a studio 44.37 m² on the right side, also after complete reconstruction).

First floor - 2 apartment units (a one-bedroom apt. 46.03 m² on the left side, a terrace 4.10 m², original state and a two-bedroom apt. 71.70 m² on the right side, original state).

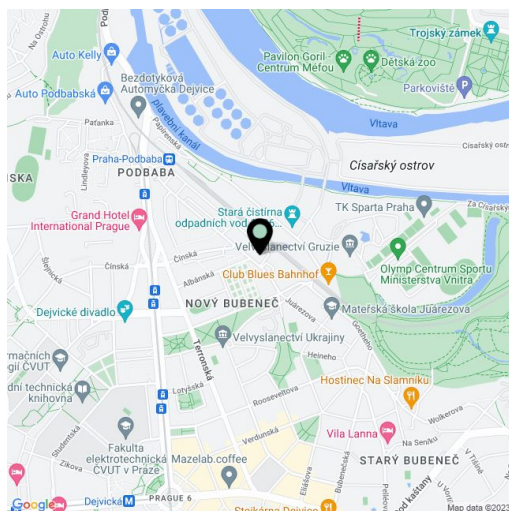
Second floor - 2 apartments (a two-bedroom apt. 45.69 m² on the left side, a balcony 4.10 m² and a two-bedroom apt. on the right side 70.72 m², a balcony).

Third floor consists of two apartment units (a studio on the left side 59.12 m² and another studio on the right side 59.59 m² complete with terraces 25.36 m²).

The last three photos show successful reconstruction of a neighboring building that included roofing of terraces and maximum use of space - **additional 100 m² of space**. For more information please contact our office.

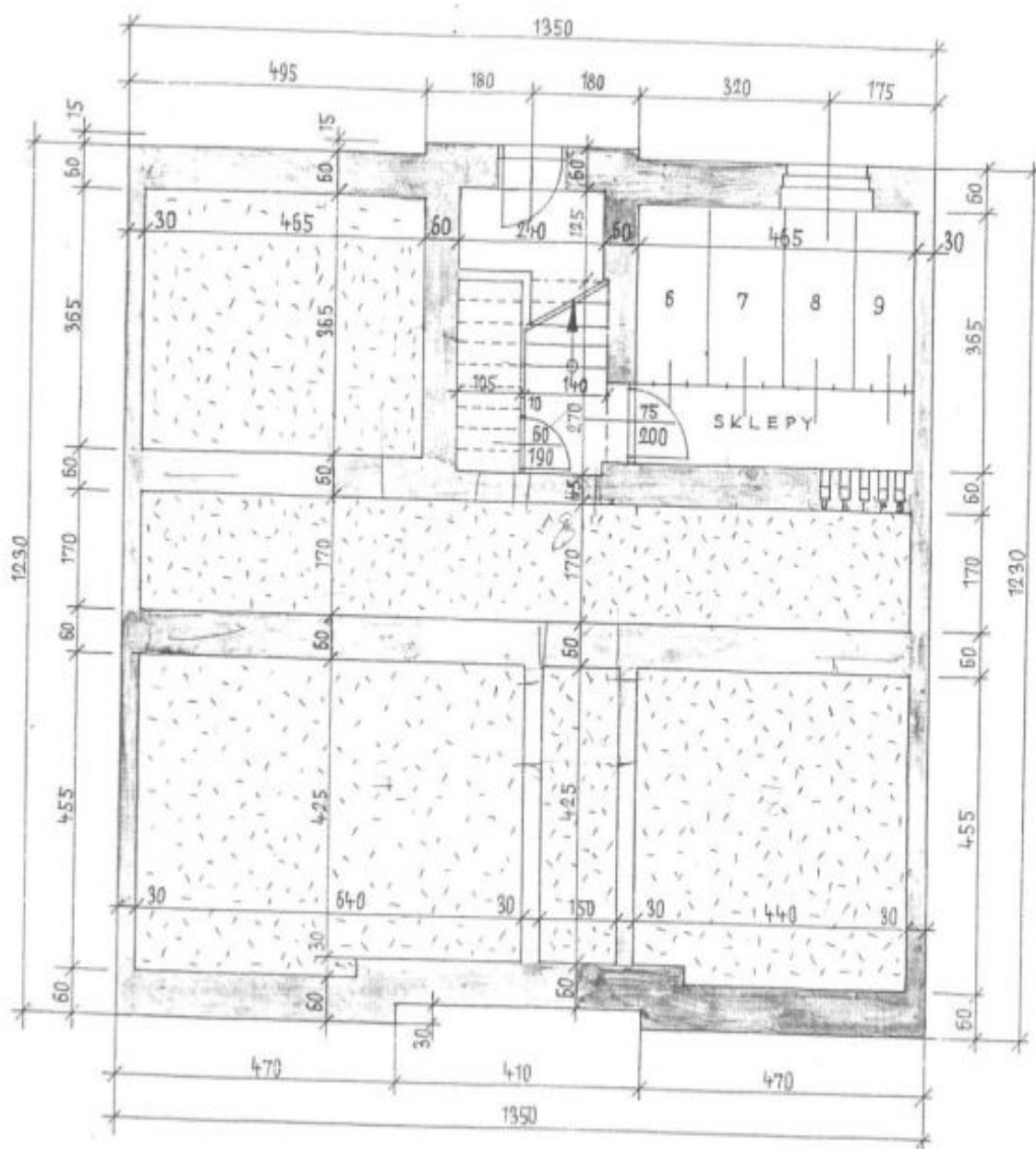
Quiet residential location close to Stromovka Park with fast access to the center. Bus lines, a 10 minute walk to Dejvická metro station, 7 minutes by metro to the center.

Plot 348 m², foot print 167 m² (48%), interior 565 m², terraces 33.56 m².



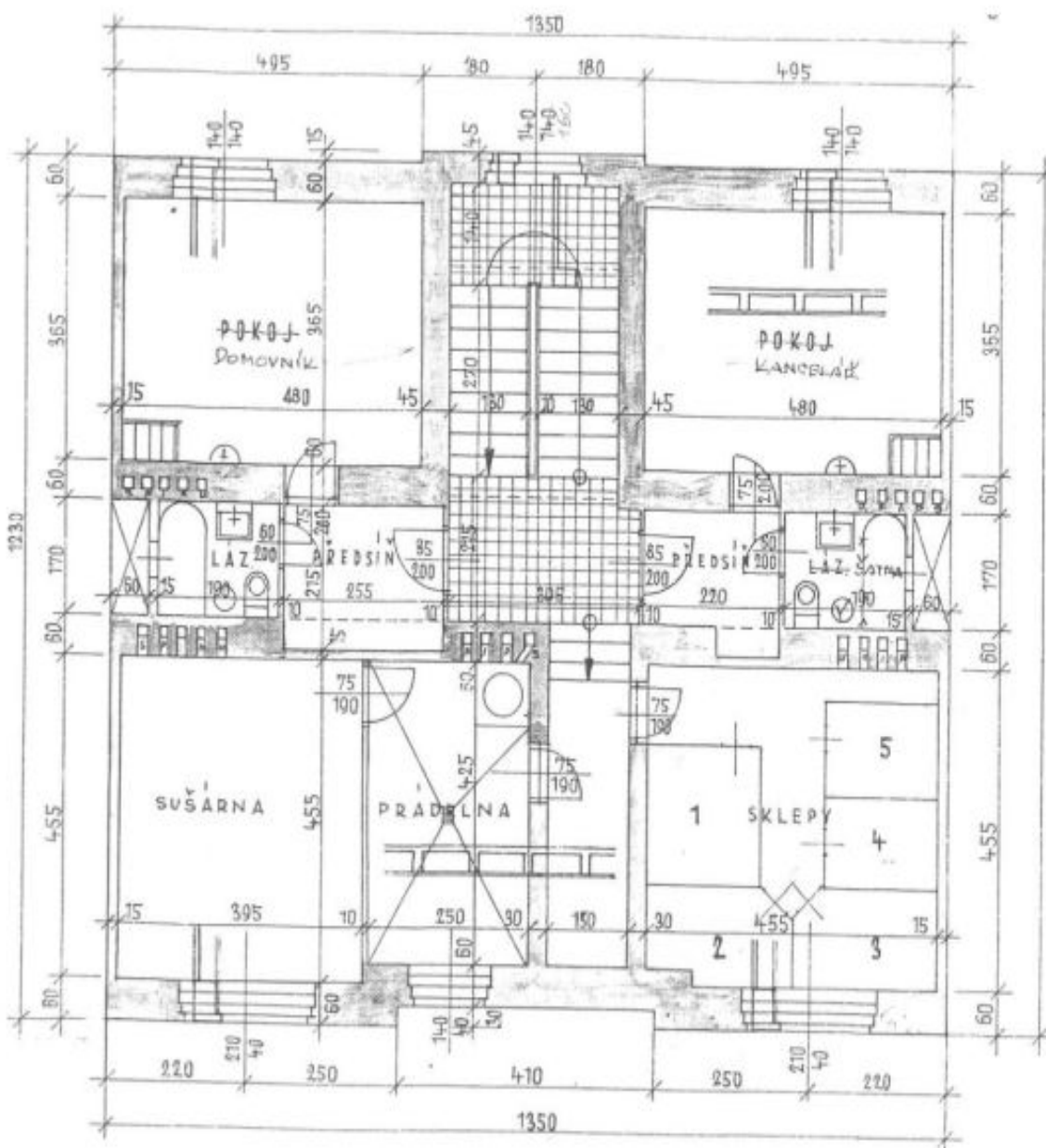


II. SUTERÉN



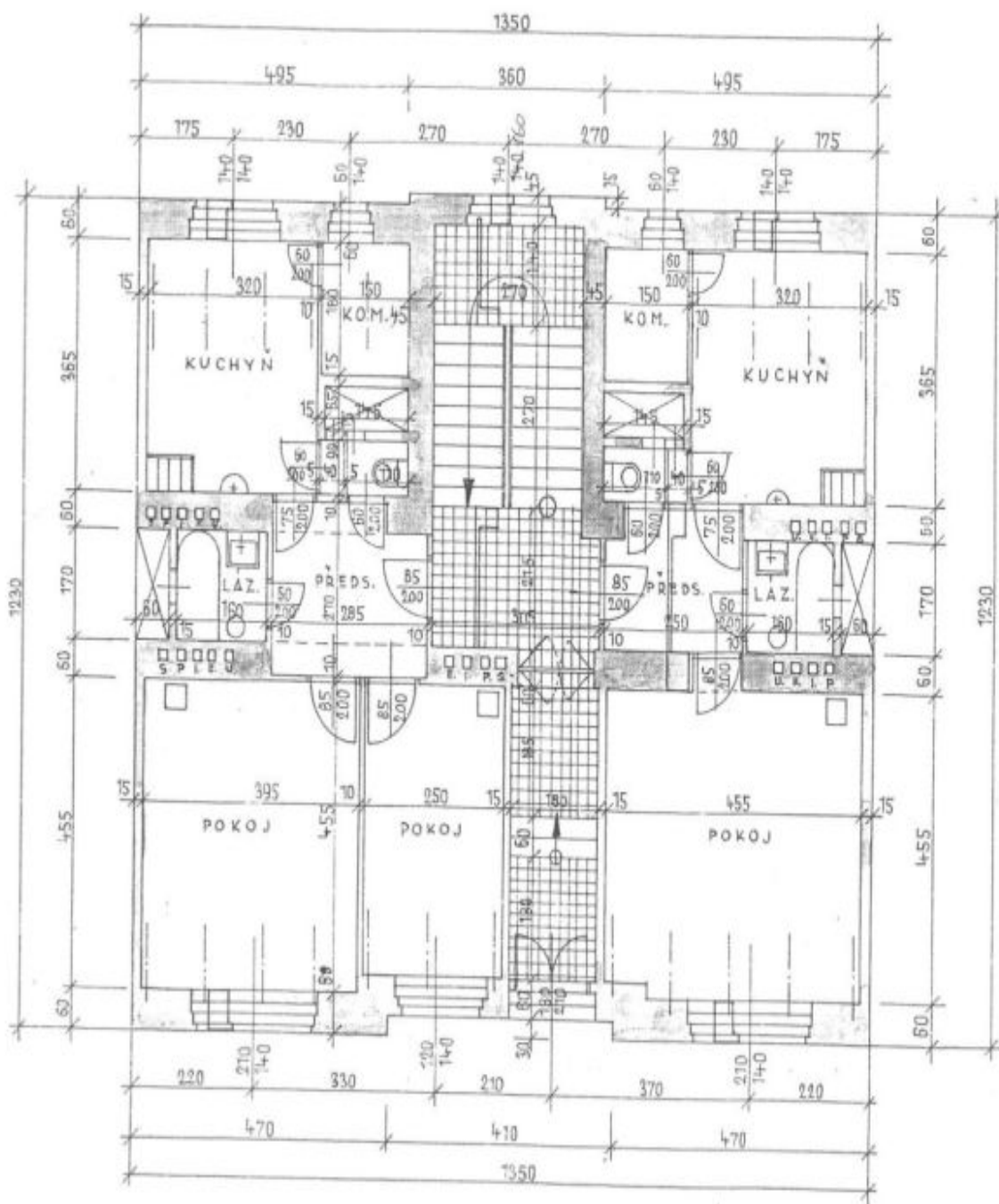


I. SUTERÉN





VI PRÍZEMÍ





I. PATRO

