



Apartment Three-bedroom (4+kk)

Sold

116 m², Prague 2, Vinohrady, Záhřebská





Apartment Three-bedroom (4+kk)

Sold116 m², Prague 2, Vinohrady, Záhřebská

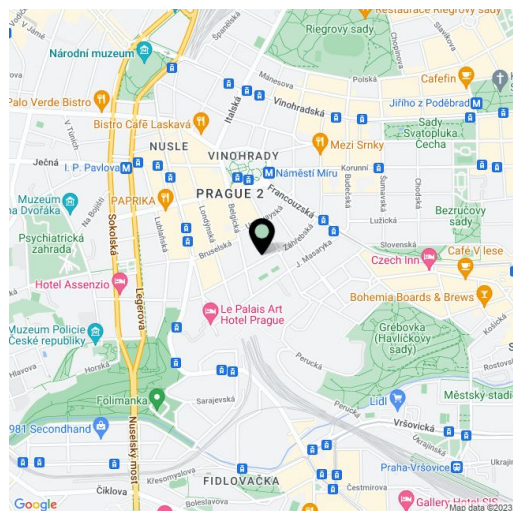
| | |
|------------------|--------------------|
| Total area | 116 m ² |
| Parking | - |
| Cellar | Yes |
| Service price | 4 300 CZK monthly |
| PENB | G |
| Reference number | 1801 |

Bright apartment situated on the 4th floor of a completely renovated early 20th century apartment building with a lift. Located in a trendy area of Královské Vinohrady, a 5 minute walk to the Náměstí Míru tram and metro station, couple of minutes more to the city center, within easy reach of fine restaurants, cafes, and two wonderful parks that surround the area.

The apartment offers an open-plan fully equipped kitchen, living room, 3 bedrooms, 2 bathrooms, laundry room, and guest toilet. Equipped with high ceilings, **oak parquet floors**, ceramic tiles, **secure triple locking doors**, satellite TV connections. The building features **video surveillance** of the common areas connected with a security center, 24-hour help line provided by the property management company.

Popular neighborhood within easy reach of the city center and all services, just a stone's throw away from divadlo Na Vinohradech Theater or Gröbovka and Bezručovy sady parks.

Interior 116 m².



* Area of the unit according to the Civil Code. The area consists of the sum total area of the entire unit bounded by perimeter walls.



Apartment Three-bedroom (4+kk)

Sold

116 m², Prague 2, Vinohrady, Záhřebská

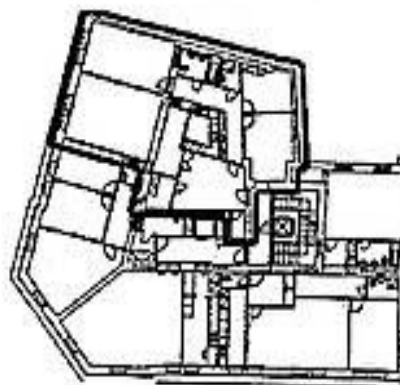
BYT Č. 16 / APARTMENT No. 16

0 1 2 3 4 5m



4. PATRO / 4th FLOOR

| | | | |
|--------|---------------|---------------|----------------------|
| 1 | OBÝVACÍ POKOJ | LIVING ROOM | 32,3 m ² |
| 2 | LOŽNICE | BEDROOM | 18,7 m ² |
| 3 | LOŽNICE | BEDROOM | 8,9 m ² |
| 4 | LOŽNICE | BEDROOM | 12,4 m ² |
| 5 | KUCHYŇ | KITCHEN | 6,1 m ² |
| 6 | VSTUPNÍ HALA | ENTRY | 14,7 m ² |
| 7 | PRÁDELNA | LAUNDRY | 3,4 m ² |
| 8 | CHODBA | FOYER | 11,8 m ² |
| 9 | KOUPELNA + WC | BATHROOM + WC | 4,5 m ² |
| 10 | KOUPELNA | BATHROOM | 2,4 m ² |
| 11 | WC | WC | 1,4 m ² |
| CELKEM | | TOTAL | 116,6 m ² |



EHS
EXECUTIVE HOUSING BROKERAGE