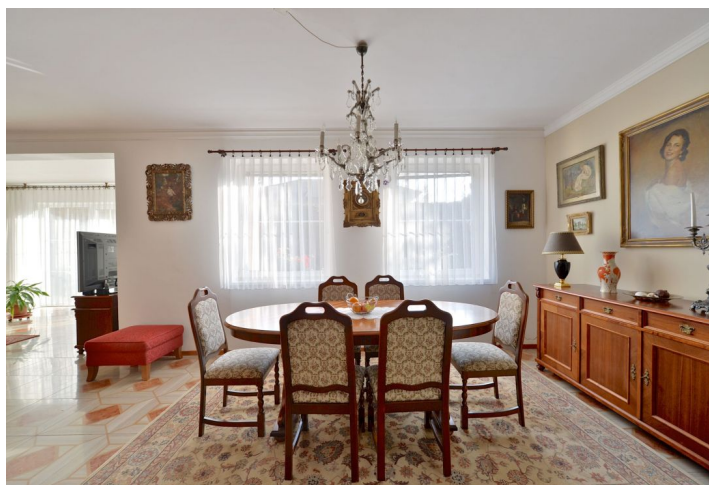




## House Four-bedroom (5+1)

351 m<sup>2</sup>, Praha-východ, Přezletice, U Bažantnice

**Sold**





## House Four-bedroom (5+1)

**Sold**351 m<sup>2</sup>, Praha-východ, Přezletice, U Bažantnice

Total area	351 m <sup>2</sup>
Plot	1 258 m <sup>2</sup>
Foot print	200 m <sup>2</sup>
Garden	1 058 m <sup>2</sup>
Floor area	286 m <sup>2</sup>
Terrace	65 m <sup>2</sup>
Parking	Yes
Garage	Yes
Cellar	-
PENB	C
Reference number	18120

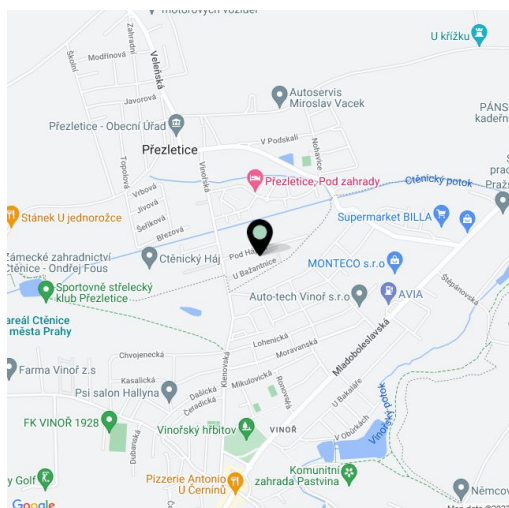
**Family house with a fireplace and a large landscaped garden, located right in front of Ctěnický forest park and in the vicinity of Ctěnice chateau, with excellent access to the center.**

The ground floor of the ivy-covered house offers a hall, study, living room with a fireplace, dining corner and kitchen, all with direct access to the terrace, a guest toilet, utility room and usable space under the stairs that lead to the 1st floor. On the first floor there are 3 bedrooms, a dressing room, 2 bathrooms, 2 balconies and a terrace. There is also a loft area with usable space.

The house features an alarm system and an elevator for the disabled. On the garden with automatic irrigation system you can find a gazebo, a fireplace with grill and seating, and a garden house with two rooms (26 m<sup>2</sup>, one is a workshop and the second one serves as storage space for garden tools). **2 paved outdoor parking spaces and a garage for 2 cars.**

Peaceful and quiet location close to the protected area of Vínový Park with ponds, rock formations and possibilities for sports and leisure. Full public amenities, public transport stop 300 m from the house, 5 minute drive to the metro lines B and C, only 17 kilometers to the city center.

Interior 286 m<sup>2</sup>, terrace 40 m<sup>2</sup>, balconies 24.7 m<sup>2</sup>, foot print 158 m<sup>2</sup>, garden 1 058 m<sup>2</sup>, 1 258 m<sup>2</sup> plot, garage 42 m<sup>2</sup>.



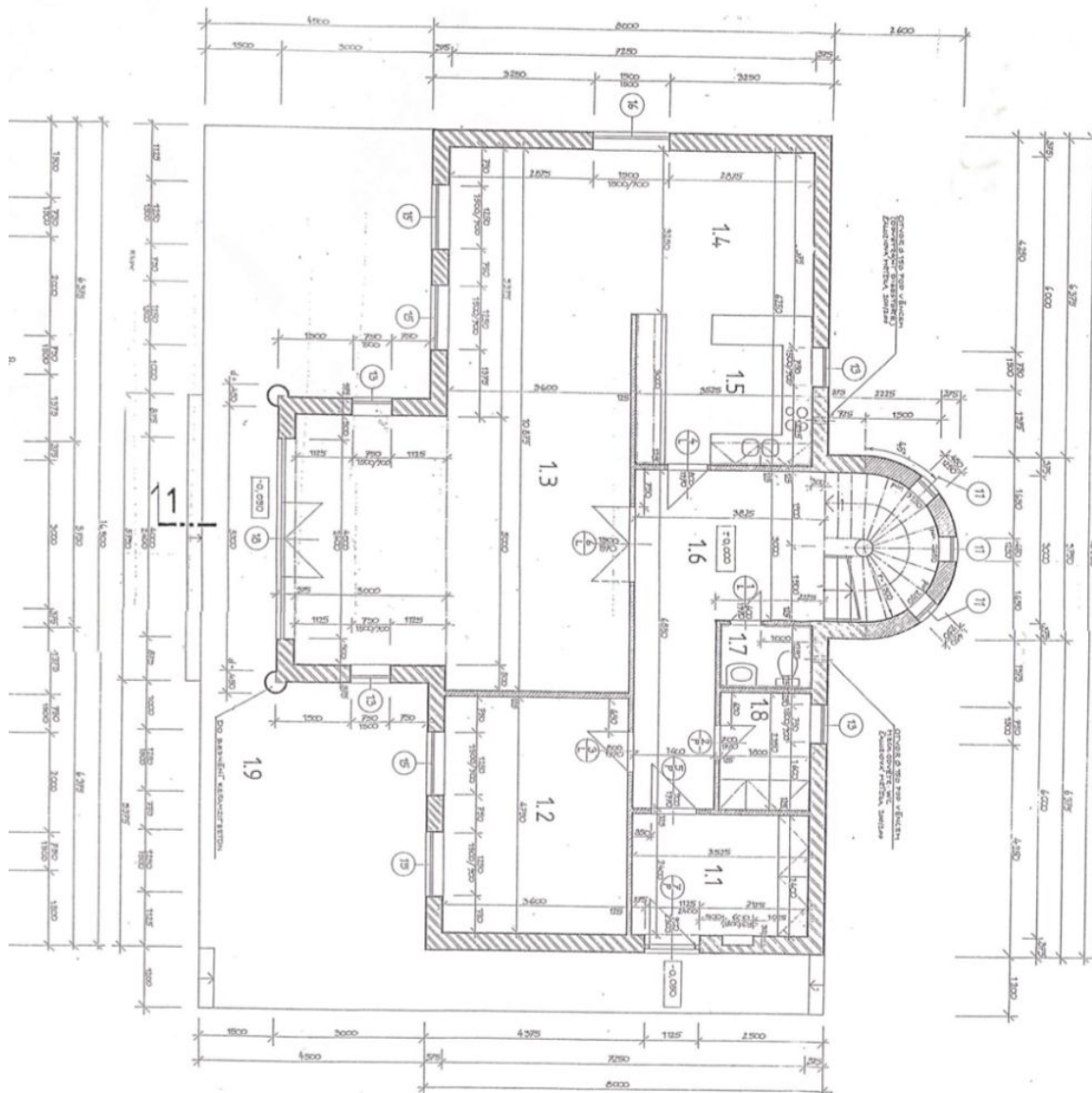




# House Four-bedroom (5+1)

351 m<sup>2</sup>, Praha-východ, Přezletice, U Bažantnice

**Sold**





# House Four-bedroom (5+1)

351 m<sup>2</sup>, Praha-východ, Přezletice, U Bažantnice

**Sold**

