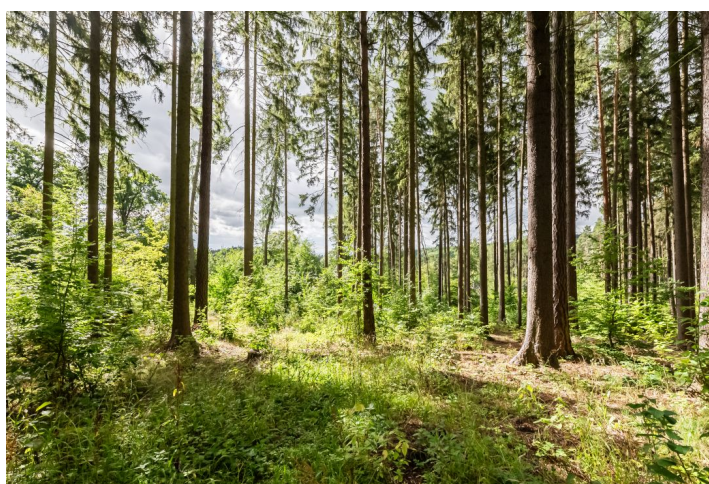




Land

12 538 m², Praha-východ, Jevany, Družstevní

Sold



12 538 m², Praha-východ, Jevany, Družstevní

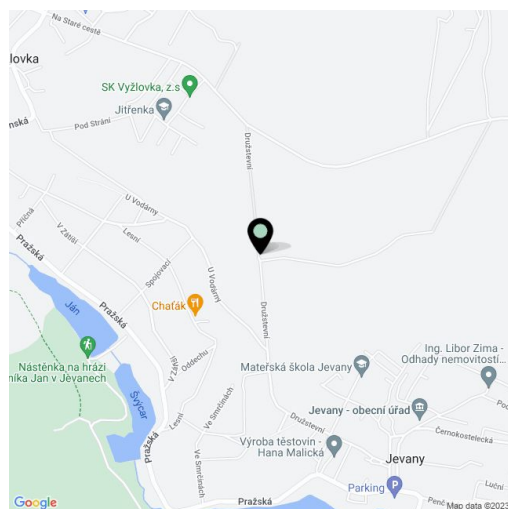
Price per sq. m.	2 911 CZK
Total area	12 538 m ²
Land type	Housing
Reference number	18130

This unique wooded plot suitable for the construction of a larger family residence is set in a quiet part of Jevany, in a nice place with a view of the pond, about 5 minutes' walk from the center of the village. With an area of approx. 12,500 sq. m. and an ideal exposure to all four cardinal directions, it provides complete privacy and peace. It is no longer zoned as forested land.

On the sloping, rectangular plot, utility connections are ready: **3 x electricity, water, and sewerage connections**. The land has a **valid zoning decision** for the **construction of 3 family houses**, and an architectural design is part of the offer. The above-standard area allows for a large distance between the proposed houses and absolute privacy from the surroundings. Access is via a paved road. The surrounding development and the boundaries of the land are the construction of solitary houses on the eastern part, while the southern and western borders of the plot are adjacent to a **wooded area**.

The land is located in a beautiful place near a swimming pond and the center of Jevany with an **authentic 1930s atmosphere**, the village is surrounded by deep forests, which also include the **Voděradské bučiny national nature reserve**. **Easy access to Prague** is ensured by a suburban bus with a terminus at the Háje metro station. Driving to the outskirts of Prague takes approximately 30 minutes.

Total area 12,538 m².





Land

12 538 m², Praha-východ, Jevany, Družstevní

Sold

