



House Six-bedroom (7+1)

503 m², Prague 9, Hloubětín, Hostavická

Sold





House Six-bedroom (7+1)

503 m², Prague 9, Hloubětín, Hostavická

Sold

Total area	503 m ²
Plot	718 m ²
Foot print	238 m ²
Garden	480 m ²
Floor area	420 m ²
Terrace	83 m ²
Parking	Yes
Cellar	-
PENB	C
Reference number	18156

This reconstructed villa complete with a swimming pool and a view of Prague is situated in a quiet residential neighborhood near the Smetanka Nature Park. Thanks to the nearby Hloubětín metro station, the place has easy access to the city center.

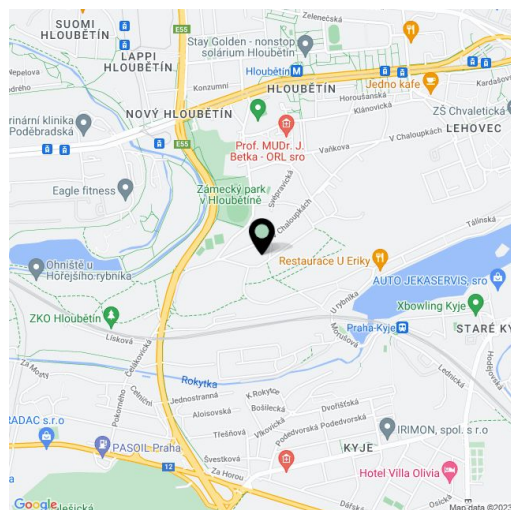
The interior of this villa that boasts an abundance of light features a spacious living room, 2 modern kitchens, 6 bedrooms, one as a study, a winter garden, 2 bathrooms, and a **large terrace** with a view of the surroundings. The house also has a **heated swimming pool with a whirlpool and relaxation facilities**.

The equipment includes floating floors, tiles, French windows and skylights, a modern kitchen with **Siemens** appliances, a central vacuum cleaner, an alarm with a connection to a central station, and gas heating. The house features a well-kept garden with a **pond**, full-grown trees, and **3 parking spaces**.

The location is distinguished by rich public amenities (a school, kindergarten, supermarkets, pharmacy, health center) and fast access to the city center: a 10-minute walk to the Hloubětín metro station, bus, and tram stops. The location is even more pleasant thanks to a large forest suitable for walkers and cyclists and the **Kyjský pond**, where you can swim in summer.

Living area 280 m², swimming pool 60 m², foot print 238 m², garden 480 m², plot 718 m².

In addition to regular property viewings, we also offer **real-time video viewings** via WhatsApp, FaceTime, Messenger, Skype, and other apps.

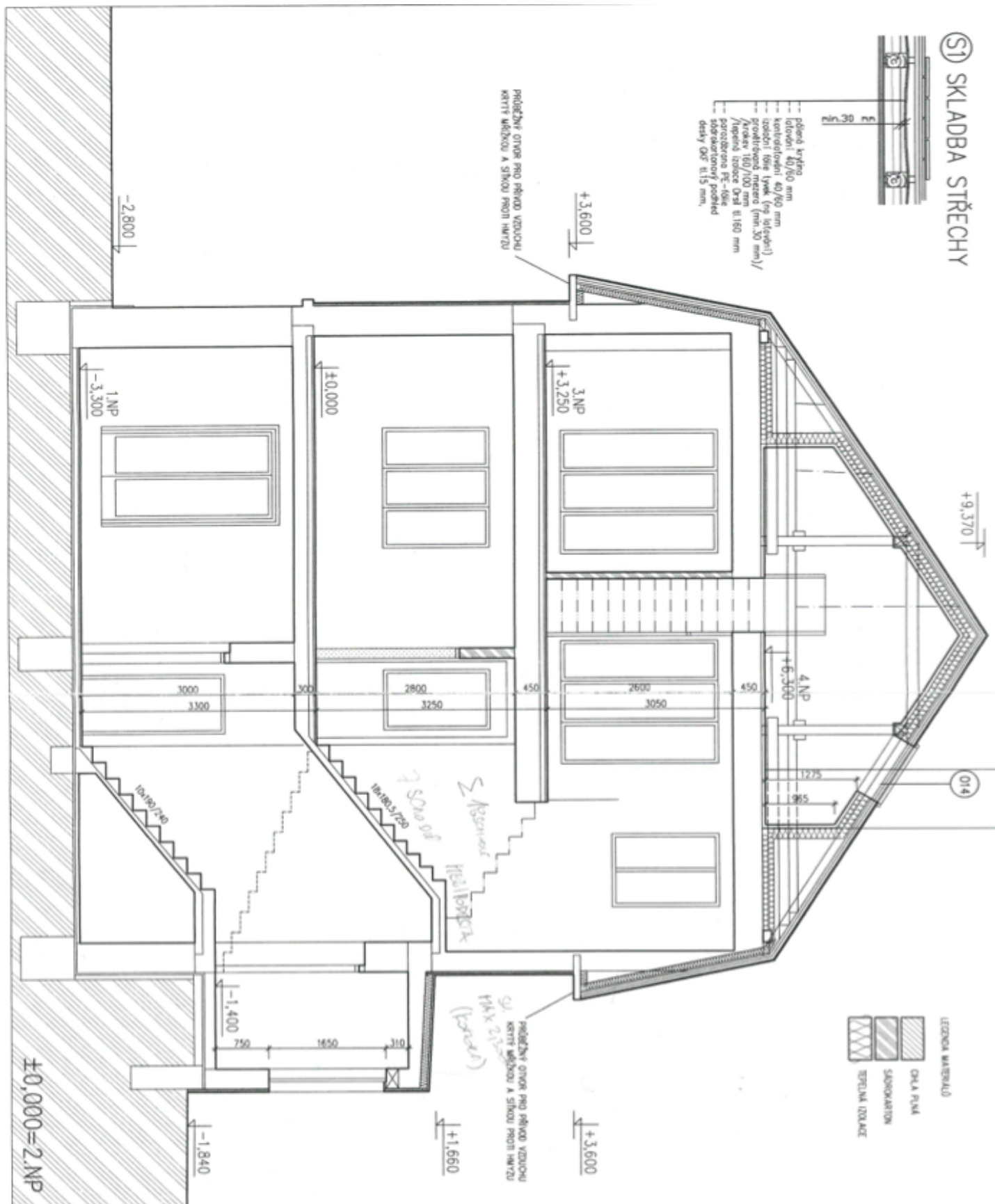




House Six-bedroom (7+1)

503 m², Prague 9, Hloubětín, Hostavická

Sold

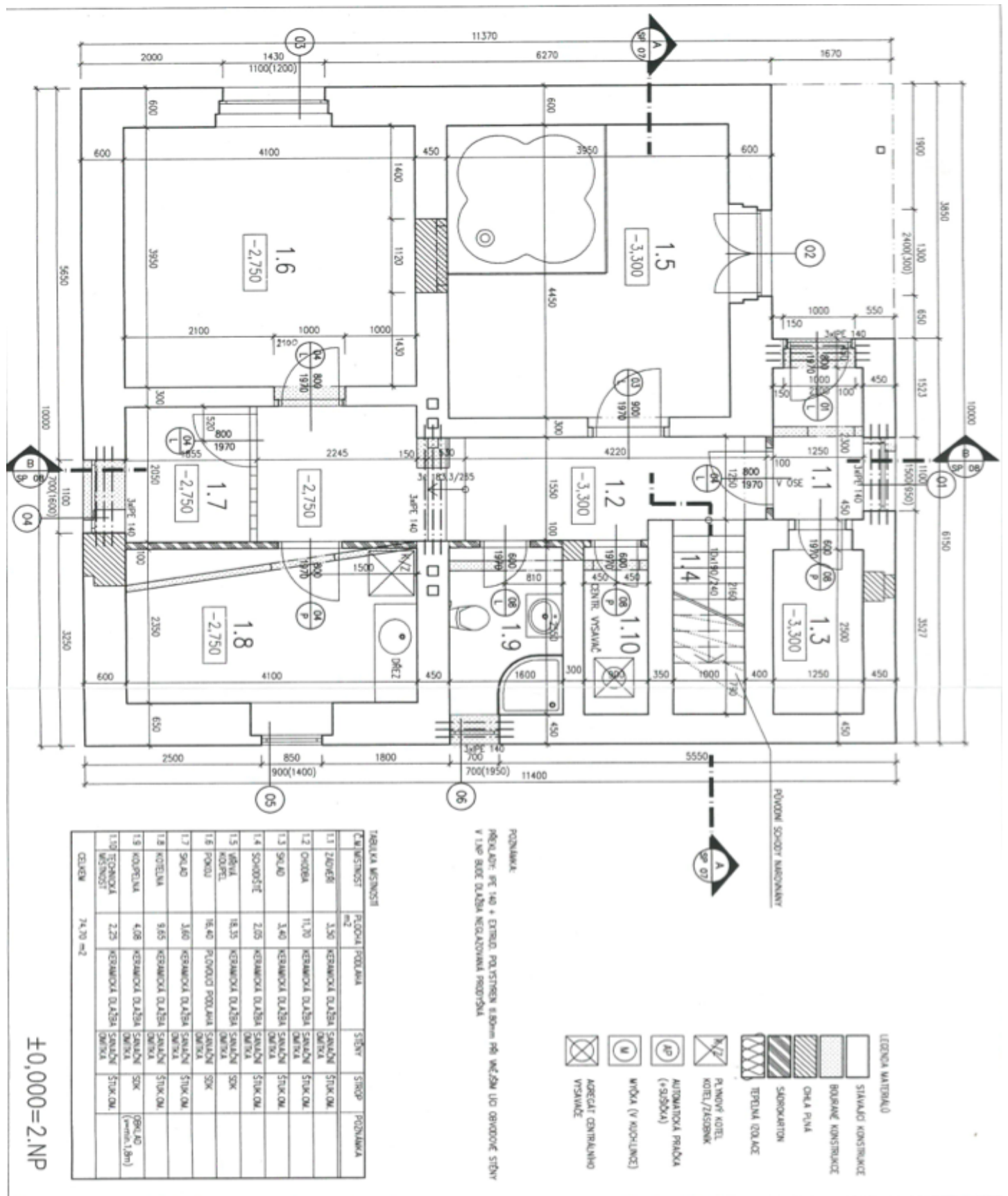




House Six-bedroom (7+1)

503 m², Prague 9, Hloubětín, Hostavická

Sold

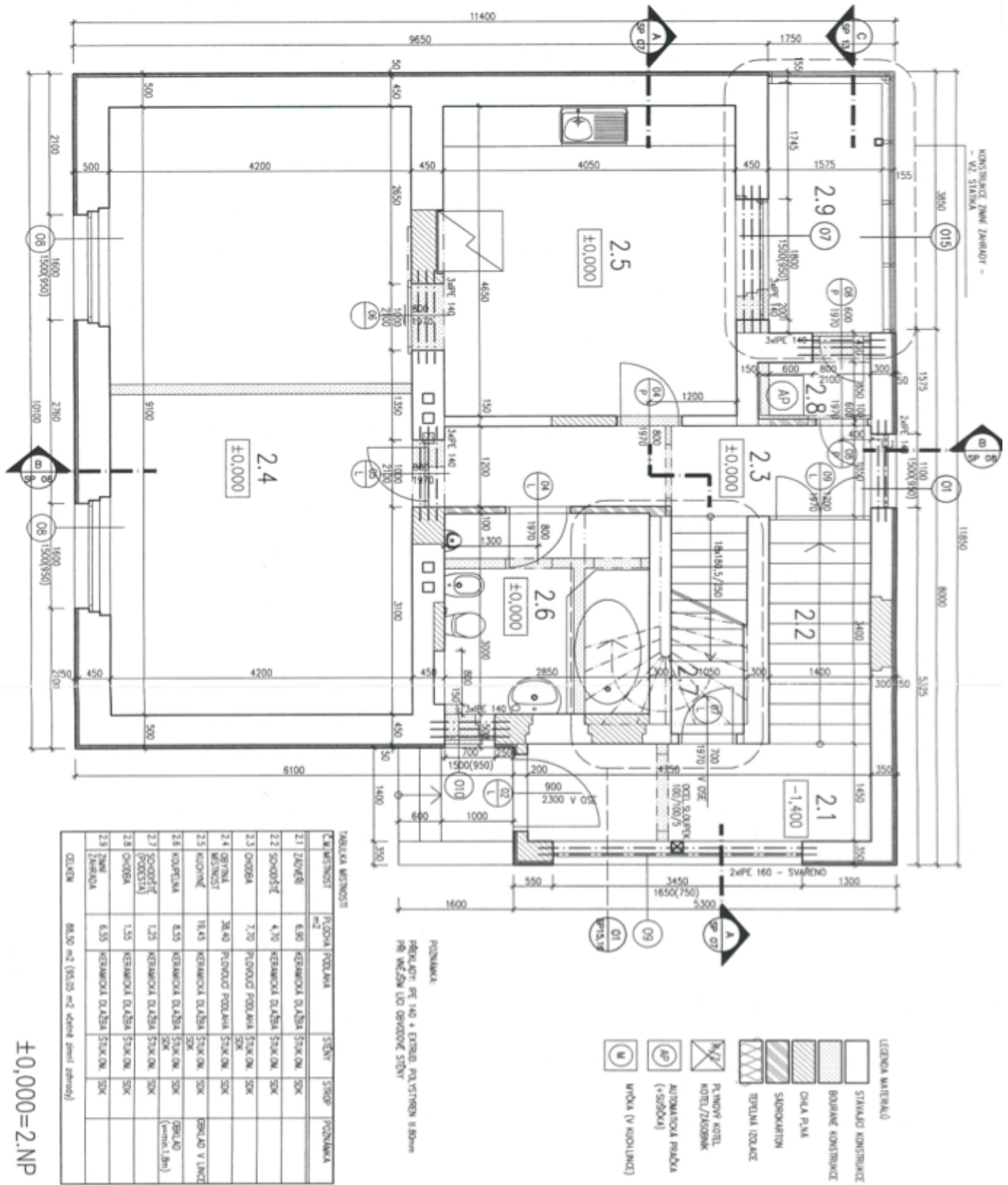




House Six-bedroom (7+1)

503 m², Prague 9, Hloubětín, Hostavická

Sold

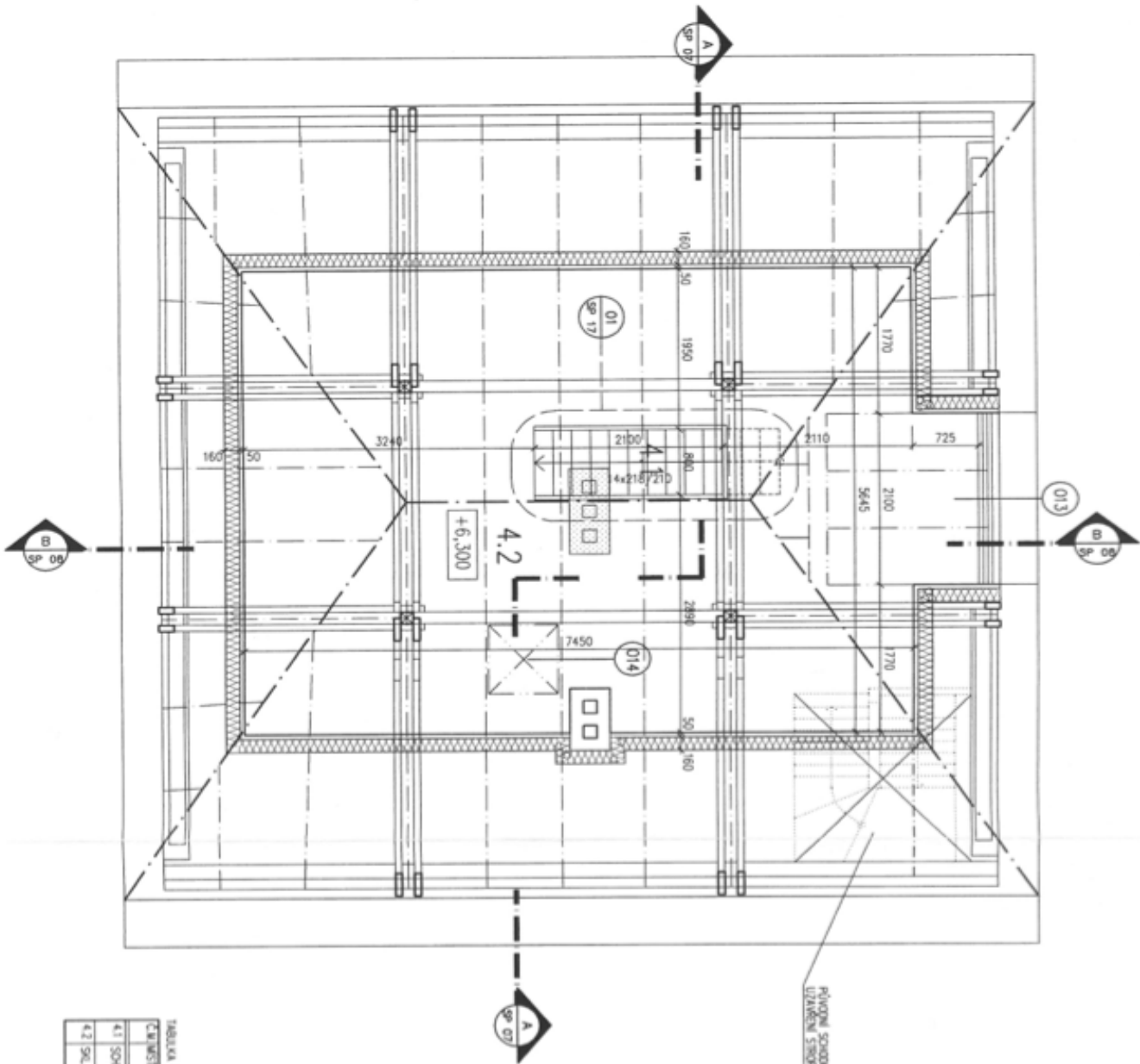




House Six-bedroom (7+1)

503 m², Prague 9, Hloubětín, Hostavická

Sold



Tabulka měřností

Číslo měřnosti	Podlaží	Podlaží	Stěny	Střechy	Poznamky
4.1	SPOKOŠTĚ	2.81	DEKOR. STĚNY	SK	SK
4.2	SKLAD	4.20	PŮVODNÍ PODLAHA	SK	SK

±0,000=2.NP

- LEGENDA MATERIÁLŮ
- STAVBNÍ KONSTRUKCE
 - DEKOR. KONSTRUKCE
 - CIKLA PŮL
 - ŠABONKOVAN
 - TĚPLOTN. IZOLACE
 - PŮVODNÍ KOTĚL/JASOVNĚK
 - AUTOMATICKÁ PRAČKA (+složka)
 - OKNA (V KROVLINĚ)