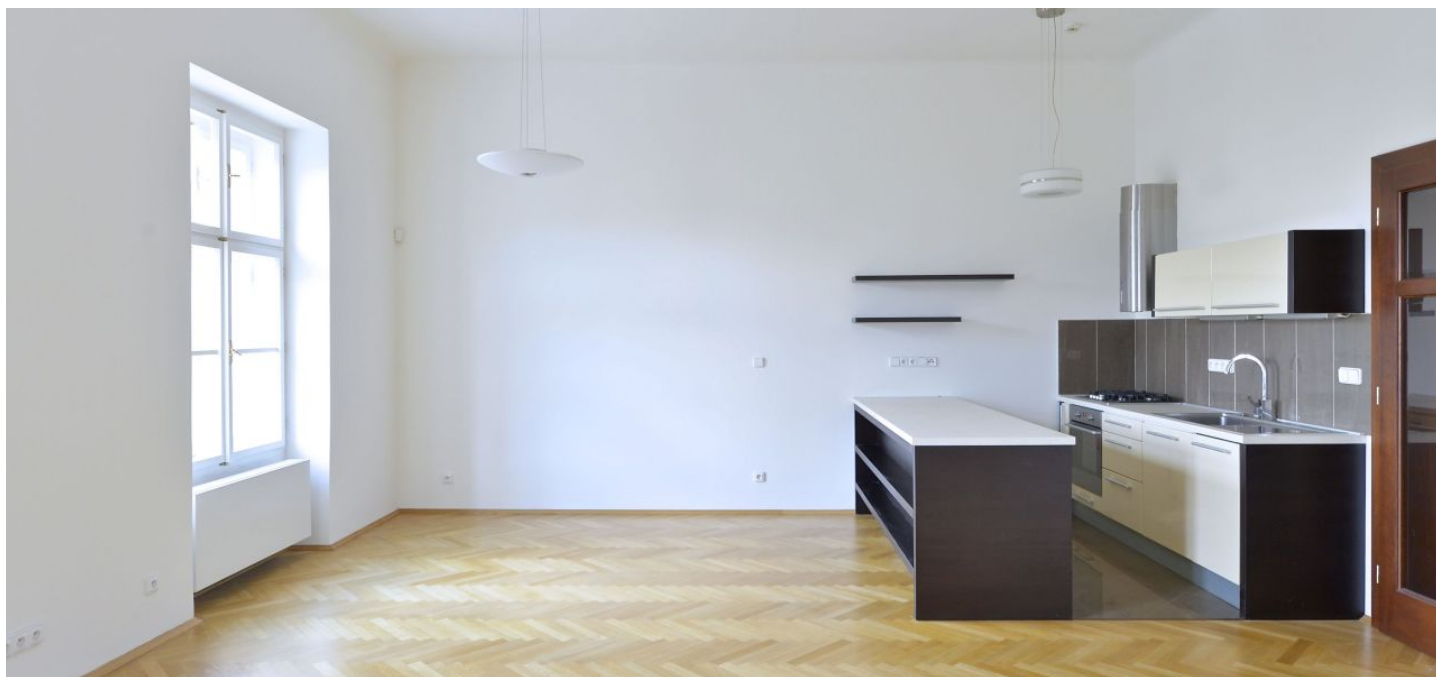




## Apartment One-bedroom (2+kk)

Rented

74 m<sup>2</sup>, Praha 5, Smíchov, Štefánikova





## Apartment One-bedroom (2+kk)

Rented

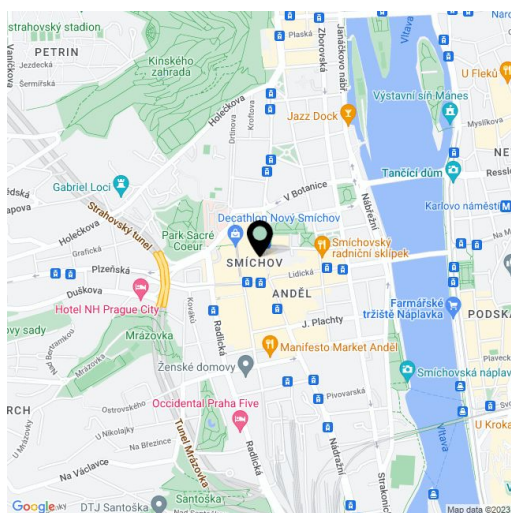
74 m<sup>2</sup>, Praha 5, Smíchov, Štefánikova

Total area	74 m <sup>2</sup>
Parking	Parking space in underground garages available 100 m from the building.
Cellar	-
PENB	G
Reference number	18172
Available from	Immediately

Spacious, renovated 1-bedroom flat on the 2nd floor in a building without lift situated near the Petřín Hill Park, close to the Vltava embankment, and convenient to the Anděl metro station and Nový Smíchov commercial center, with quick connection to the city center.

The apartment includes a living room with dining area and a fully fitted open kitchen, bathroom with bath tub and shower, toilet separately, and an entry hall.

Parquet and tile floors, dishwasher, alarm, Internet connection, wardrobes. Possible to rent as furnished at a higher rent. Common building charges are included. Deposit for water CZK 500/two persons/month. Utilities will be transferred to the tenant's name.



\* Area of the unit according to the Civil Code. The area consists of the sum total area of the entire unit bounded by perimeter walls.