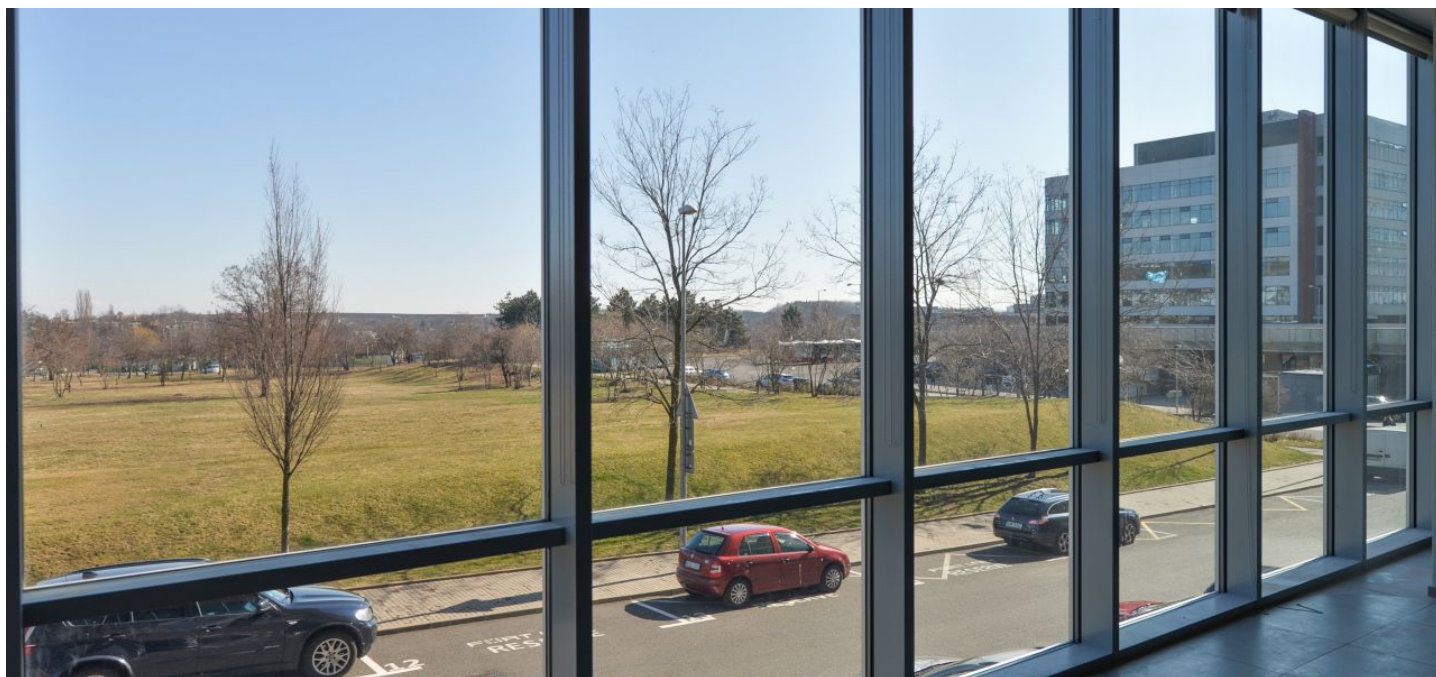




Retail space

Praha 5, Stodůlky, Bucharova

Ask for price





Retail space

Praha 5, Stodůlky, Bucharova

Ask for price

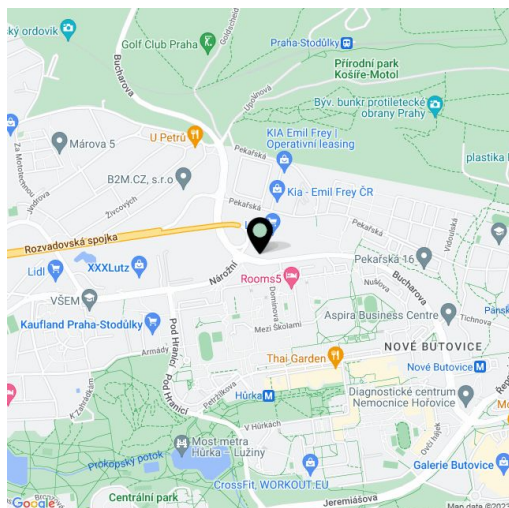
Available area	349 m ²
Parking	Yes
PENB	G
Reference number	18204

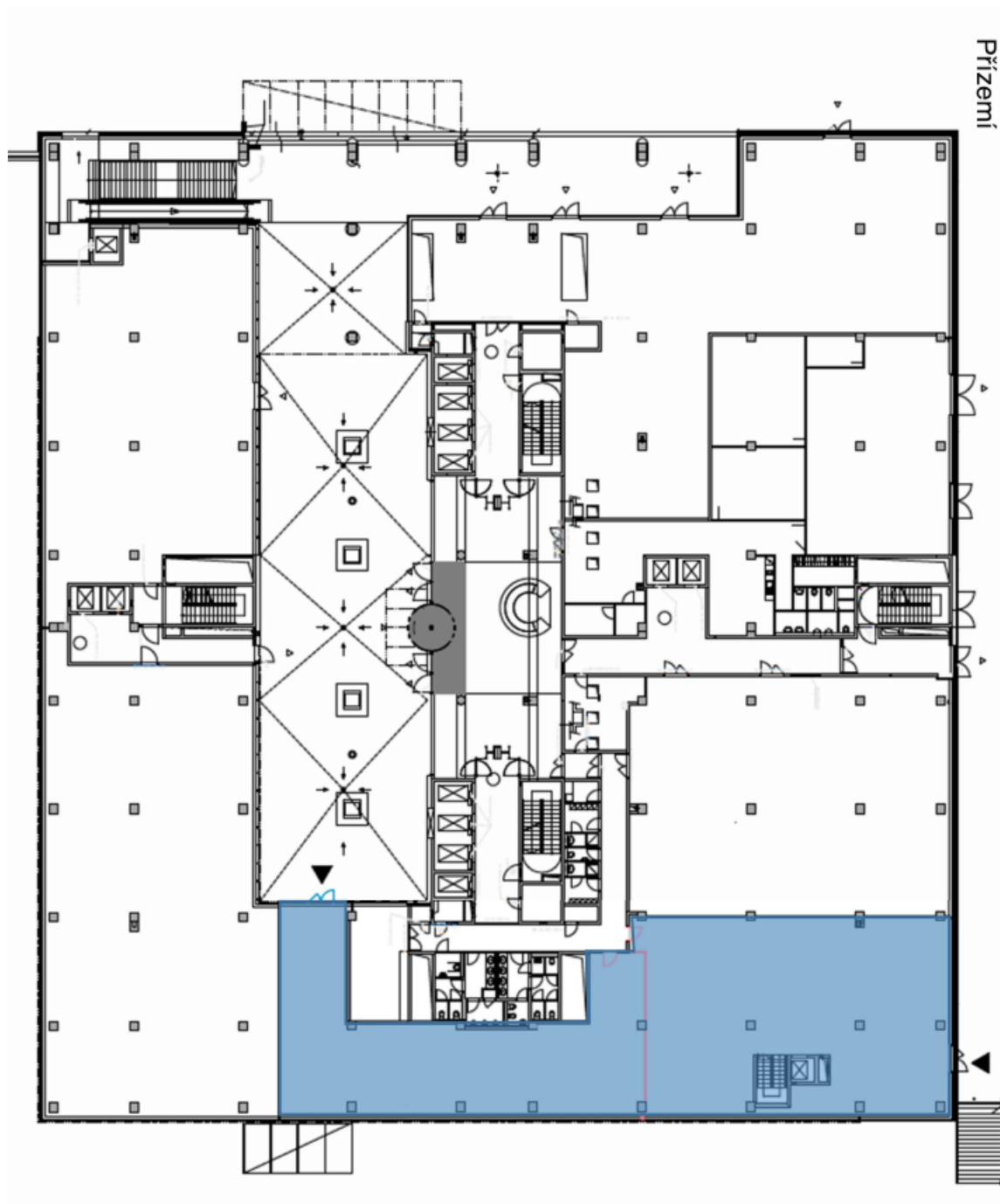
Retail space for lease in an established office and business location in Prague, next to a metro station, with excellent access to the international airport. The building has been awarded BREEAM Excellent certification, which assesses the level of compliance with sustainable building criteria.

Location:

Excellent public transport accessibility - the Nové Butovice metro station (line B) is located directly in front of the building. Václav Havel Airport is only 15 minutes from the building, Nemocnice Motol is 7 minutes away.

Rental and service charges listed without VAT. Lessee pays no commission.







Retail space

Praha 5, Stodůlky, Bucharova

Ask for price

