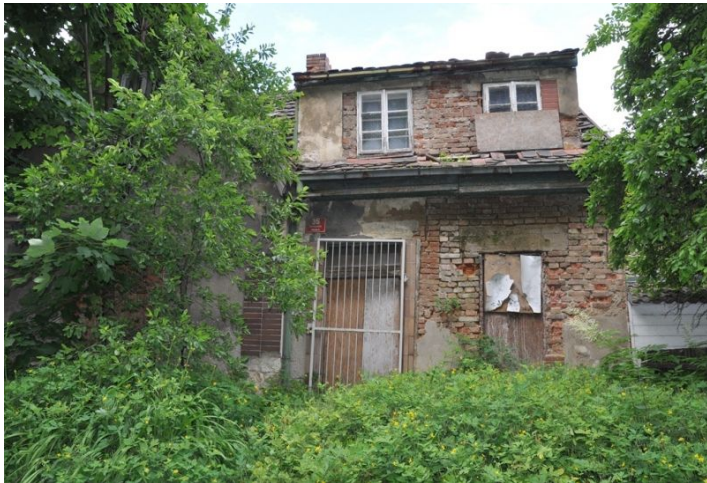




House Four-bedroom (5+kk)

250 m², Praha 6, Veveslavín, Pod novým lesem

Sold





House Four-bedroom (5+kk)

Sold250 m², Praha 6, Veveslavín, Pod novým lesem

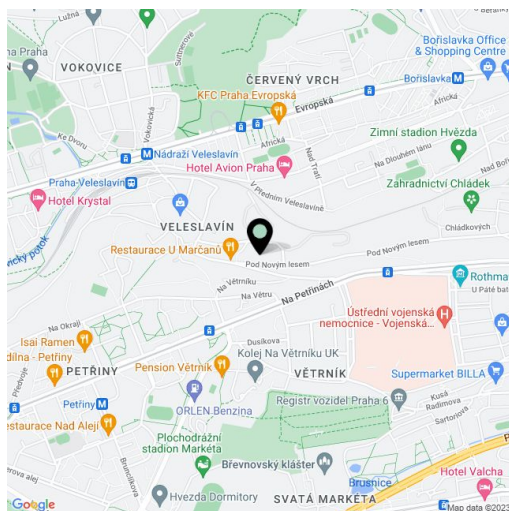
Plot	173 m ²
Parking	Yes
Garage	Yes
Cellar	Yes
PENB	G
Reference number	18240

Unique opportunity to purchase a family house with a front garden suitable for complete reconstruction, situated in Prague 6 in the quiet residential area of Veveslavín, near a future metro station and with very good access to the center as well as the airport.

This three-story house with a small yard is offered for sale with a project for reconstruction and therefore, the future owner has an opportunity to adjust the house fully according to his requests and needs. Future usable area 300 m². The house features a cellar and a garage.

The house is located in a very pleasant part of Prague 6 within reach of all public amenities (schools, shops, a sports center, Military University Hospital). A few minutes walk from a tram stop to Hradčanská or Dejvická metro station. The new Veveslavín metro station to open nearby in September 2014.

Current interior 250 m², plot 173 m². For possible redevelopment of the house see plans above.





House Four-bedroom (5+kk)

Sold

250 m², Praha 6, Veleslavín, Pod novým lesem



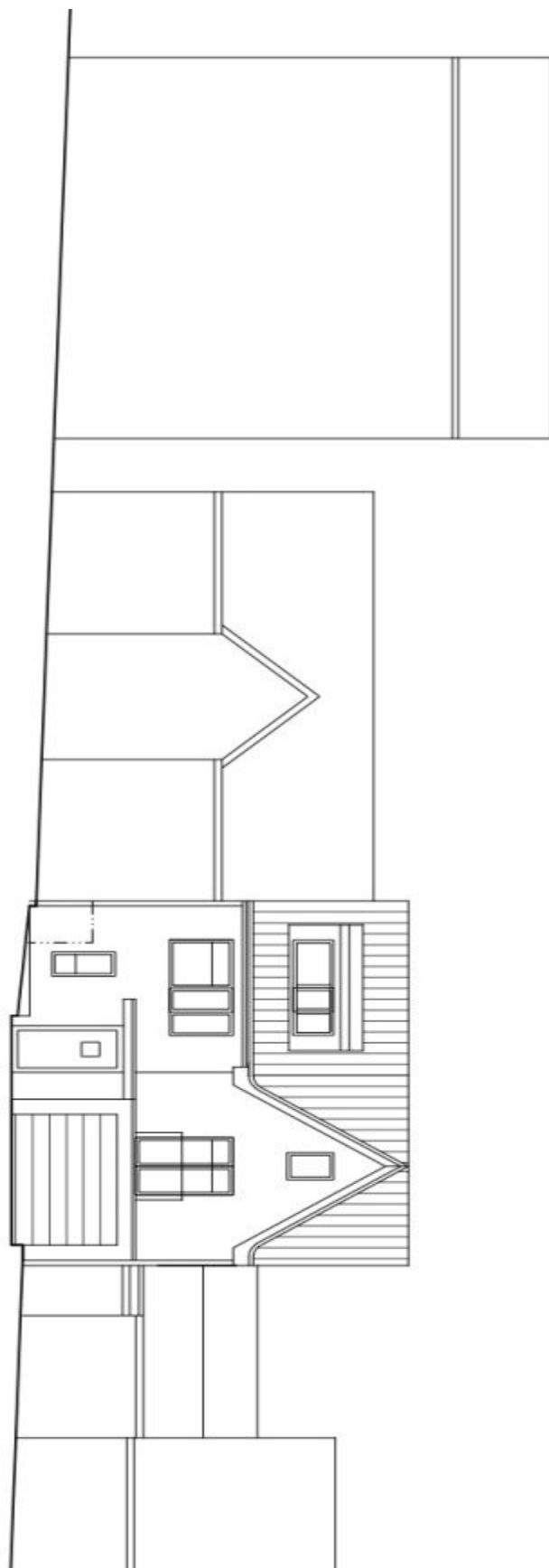


House Four-bedroom (5+kk)

Sold

250 m², Praha 6, Veleslavín, Pod novým lesem

POHLED JIŽNÍ

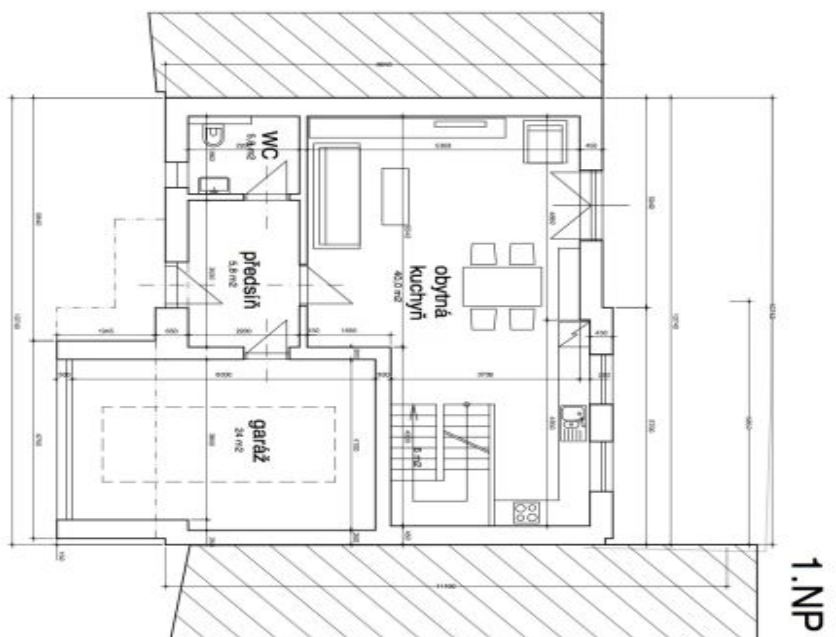
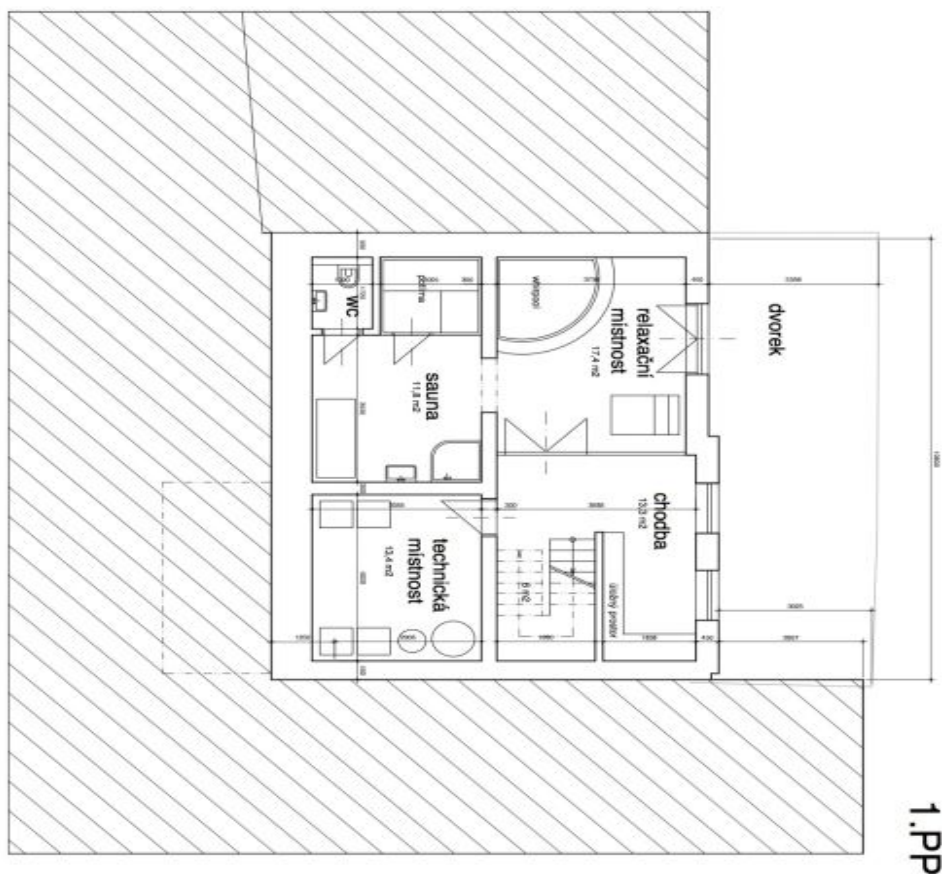




House Four-bedroom (5+kk)

250 m², Praha 6, Veleslavín, Pod novým lesem

Sold

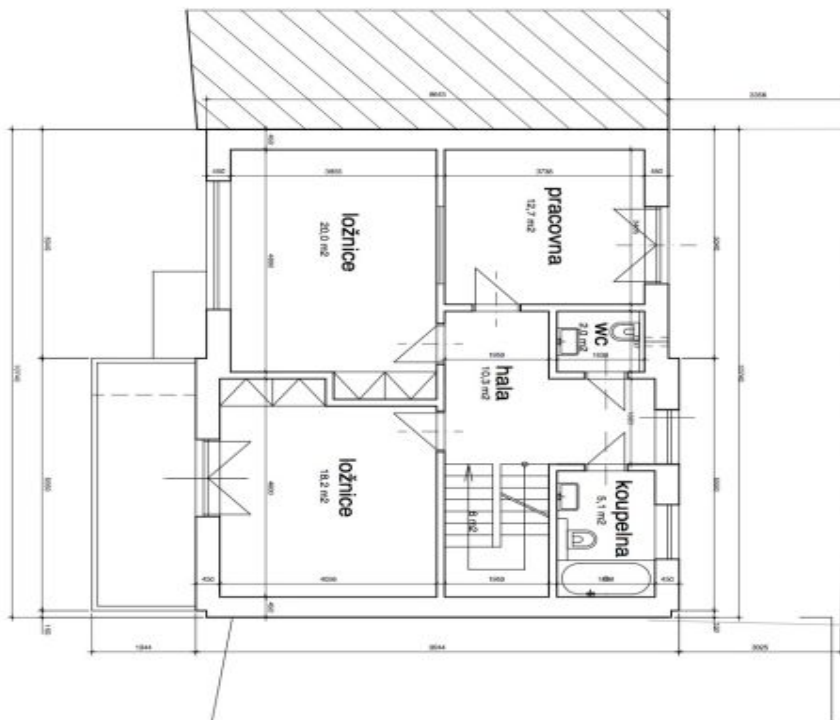




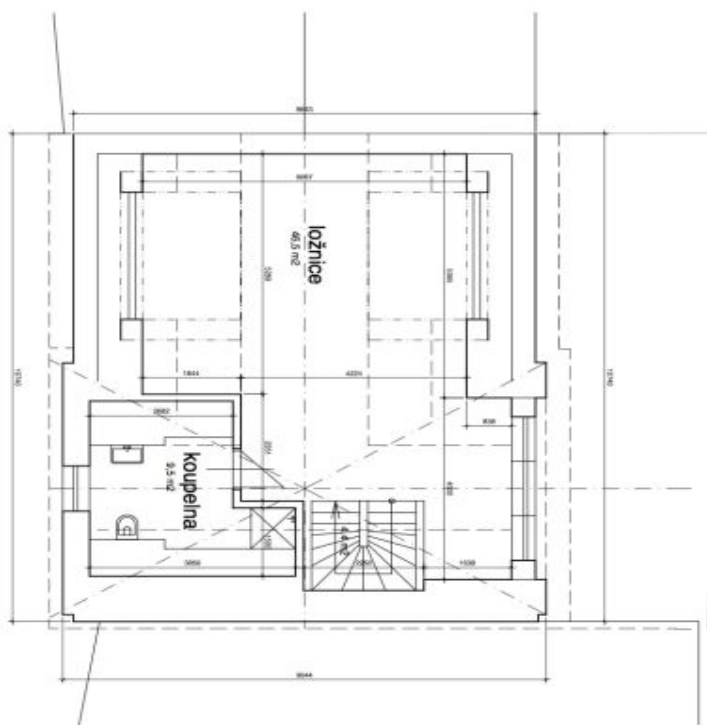
House Four-bedroom (5+kk)

250 m², Praha 6, Veleslavín, Pod novým lesem

Sold



2.NP



3.NP