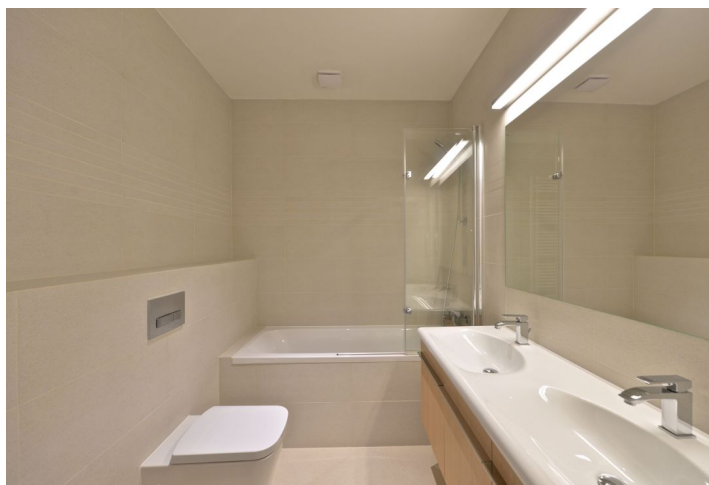
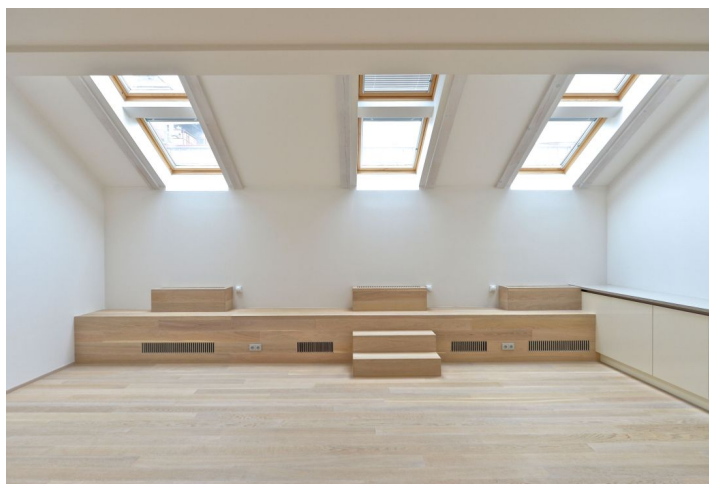




Apartment Two-bedroom (3+kk)

Rented

105 m², Prague 1, Nové Město, Petrská





Apartment Two-bedroom (3+kk)

Rented

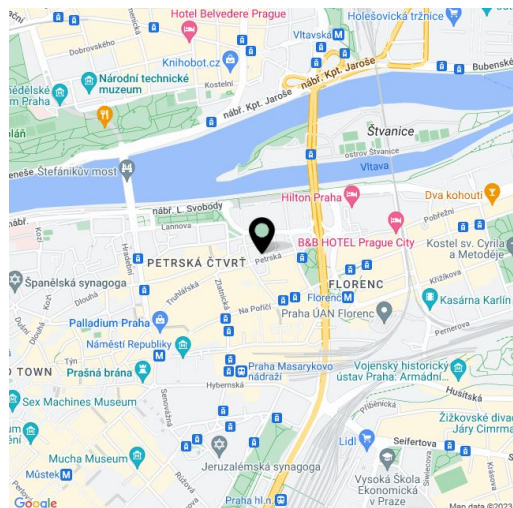
105 m², Prague 1, Nové Město, Petrská

Total area	105 m ²
Parking	Garage parking.
Garage	Yes
Cellar	Yes
Service price	Deposit for common building charges and water CZK 6,500/month. Electricity - transferred to the tenant.
PENB	C
Reference number	18271
Available from	Immediately

Unfurnished apartment on the 4th floor of a renovated traditional building with an elevator located on a quiet street in the city center, within easy reach of quality restaurants, cafes, and shopping. Just a few minute's walk to the Náměstí republiky and Florenc metro stations, the Hilton Hotel, and the largest Czech shopping mall - Palladium. A swimming pool and fitness center is a two-minute walk away, and the Štvanice tennis courts are close-by.

The interior features a good sized living room with a fully fitted open plan kitchen and dining area, two bedrooms, two bathrooms (walk-in shower/bathtub, bidet, toilet), and a spacious entry hall with built-in storage.

Hardwood oak floors, tiles, security entry door, built-in wardrobes, blinds, washing machine, dishwasher, microwave, 5.9 m² cellar. Garage parking available in the building for CZK 4,800/month.



* Size of the unit according to the Housing Act.

The area consists of the sum total of the internal area of every room.