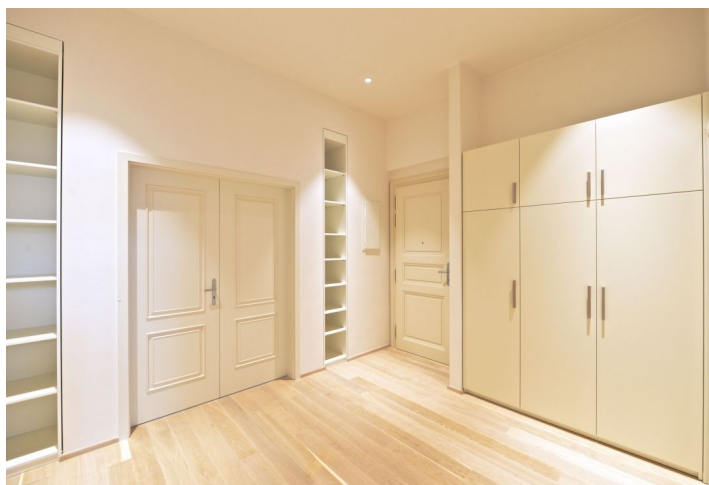




Apartment Two-bedroom (3+kk)

Rented

102 m², Praha 1, Nové Město, Petřská





Apartment Two-bedroom (3+kk)

Rented

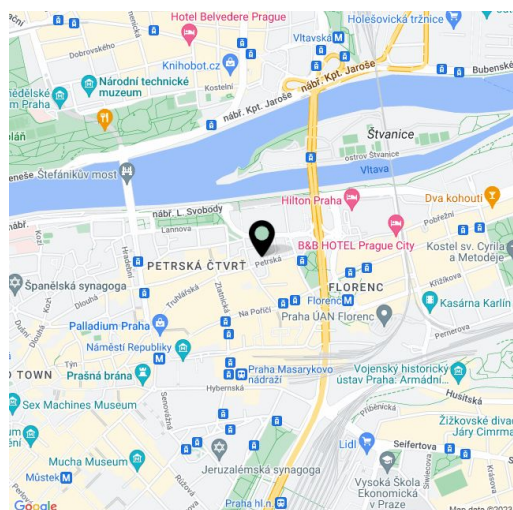
102 m², Praha 1, Nové Město, Petřská

| | |
|------------------|--|
| Total area | 102 m ² |
| Parking | Garage parking available at CZK 4,500/month. |
| Garage | Yes |
| Cellar | Yes |
| PENB | G |
| Reference number | 18273 |
| Available from | Immediately |

Fully refurbished unfinished 2-bedroom 2-bathroom flat on the third floor of a completely newly renovated traditional building with a lift. Located in a quiet street in the city center, within easy reach of quality restaurants, cafes and shopping. Just a few minute walk to the Náměstí republiky and Florenc metro stations, the Hilton Hotel, and the largest Czech shopping mall - Palladium. Swimming pool and fitness center a two minute walk, Štvanice tennis courts close by.

The bright interior features living room with a fully fitted open kitchen and dining area, two bright bedrooms, two bathrooms (walk-in shower / tub, bidet, toilet), and a spacious entry hall.

Solid wood oak floors, tiles, large windows, security entry door, built-in wardrobes, washing machine, dishwasher, microwave oven, 5.9 m² cellar. Garage parking in the building at CZK 4,500/month. Common building charges, heating and water CZK 5,000/month. Energies are billed separately. Available from October 2019.



* Area of the unit according to the Civil Code. The area consists of the sum total area of the entire unit bounded by perimeter walls.