



## Retail space

€ 13.00 - 15.00 / m<sup>2</sup> | CZK 326 - 376 / m<sup>2</sup>

Brno-město, Brno - Bohunice, Palachovo náměstí

Service price	108 CZK monthly per m <sup>2</sup>
Available area	1 087 m <sup>2</sup>
Min. area	200 m <sup>2</sup>
Parking	Yes
PENB	G
Reference number	18505

This complex of a shopping center and administrative buildings with offices for rent meets the highest international standards and offers almost 50,000 square meters of modern and fully flexible office space. The space could be used according to future tenants needs and wishes as offices, showrooms, service work-rooms, technology centers, laboratories, etc.

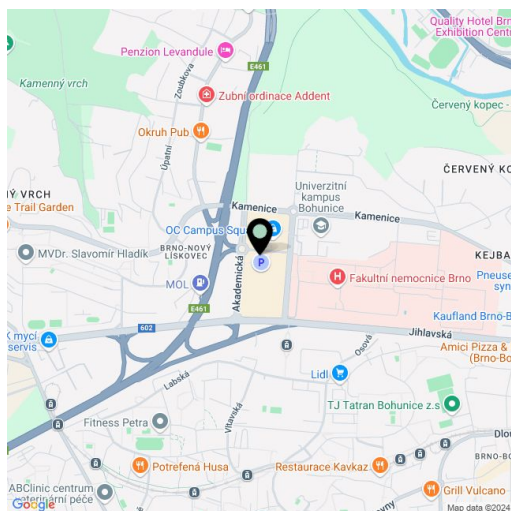
Spaces can be divided from 200 sq. m.

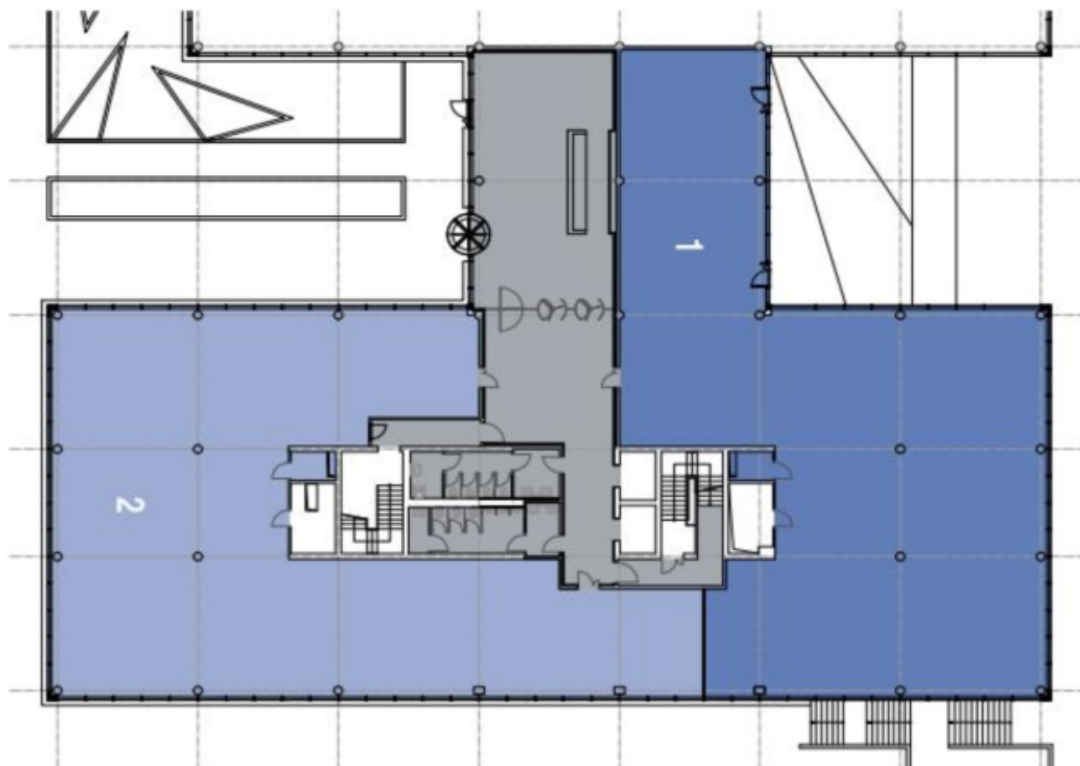
**Location:**

The complex is situated in the western part of Brno, in the vicinity of Masarykova University and University Hospital Brno. Outstanding accessibility by car and public transportation - bus and trolley stops are located directly opposite of the complex. Direct junction to motorway D1 and easy access to the Brno-Tuřany international airport.

Images might not accurately reflect the current state of the premises.

Rental and service charges listed without VAT. Lessee pays no commission.





Building B	
Ground Floor/INP	
Unit	Size
1	552 m <sup>2</sup>
2	535 m <sup>2</sup>