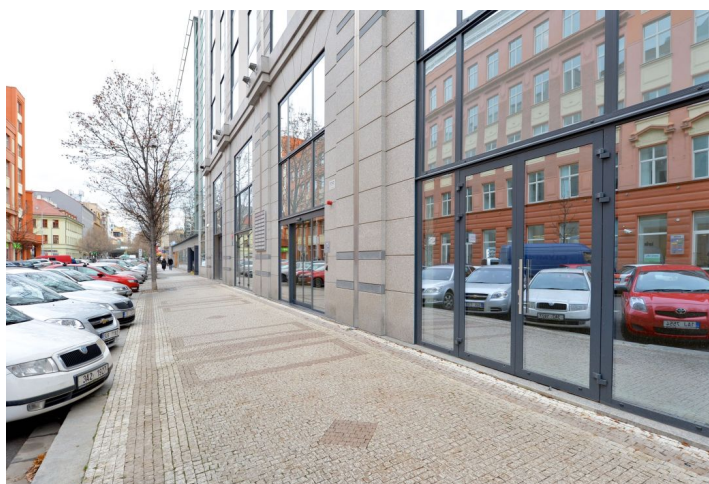




Retail space

Prague 8, Karlín, Thámova

Rented





Retail space

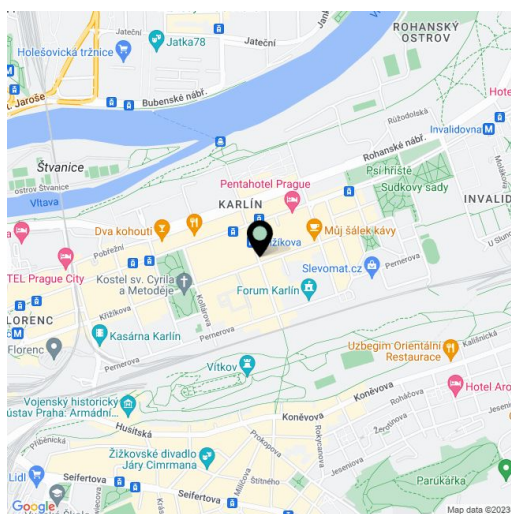
Prague 8, Karlín, Thámova

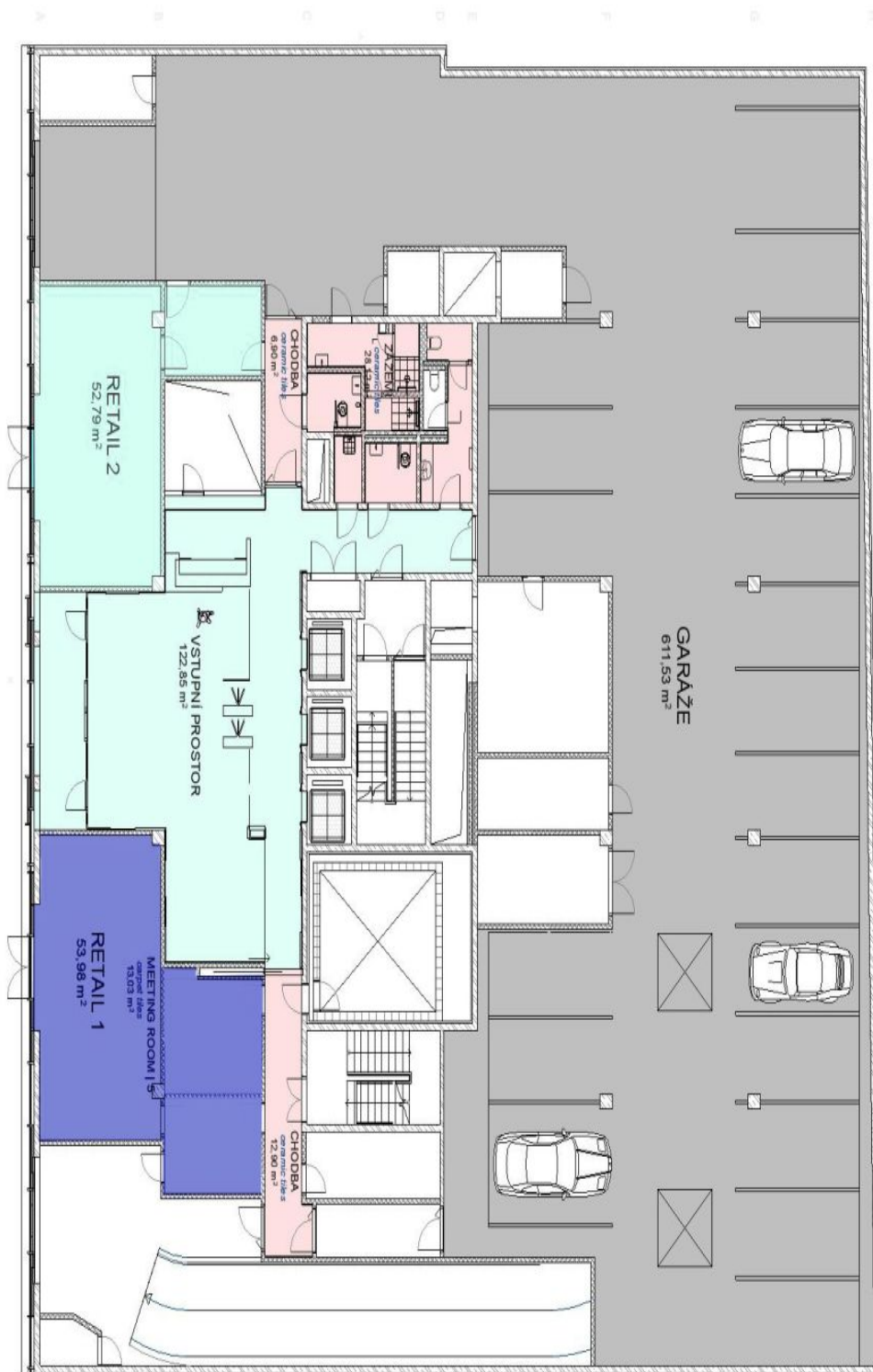
Rented

Service price	175 CZK monthly per m ²
Available area	55 m ²
Parking	EUR 100 / ps / month
PENB	C
Reference number	18525

Retail space on the ground floor of an administrative building located in the popular business, residential and administrative location of Prague 8, Karlín. It is easily accessible by public transport and by car – the Křižíkova metro station (line B) and a tram stop are just a few minutes on foot from the space – and offers easy connection with the D8 highway and with the city center. The surroundings feature a full array of services and amenities, including stores, cafés and restaurants, medical facilities, banks and parks.

Rental and service charges listed without VAT. Lessee pays no commission.





1.nadzemní podlaží