



House Six-bedroom (7+1)

Sold

190 m², Praha-východ, Řež, U Radnice





House Six-bedroom (7+1)

190 m², Praha-východ, Řež, U Radnice

Sold

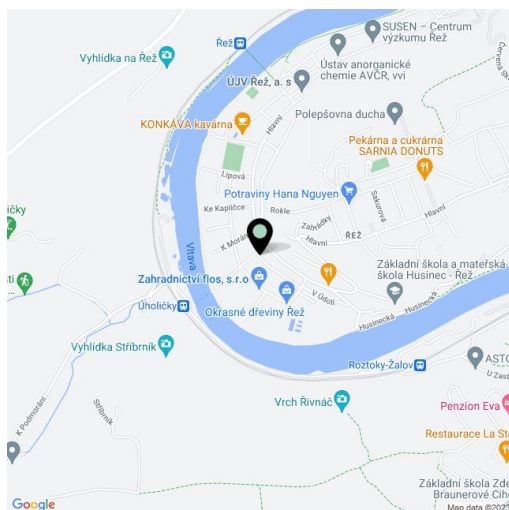
Usable area	190 m ²
Plot	1 139 m ²
Foot print	112 m ²
Garden	1 027 m ²
Floor area	175 m ²
Terrace	15 m ²
Parking	-
Cellar	Yes
PENB	G
Reference number	18539

A classic family villa from 1925 with a large garden with full-grown trees, suitable for a partial or total reconstruction, situated near Prague in the beautiful surroundings of the Dolní Povltaví nature reserve.

The house consists of two floors, a loft and a small basement. Ground floor, approachable through a glass vestibule, consists of a kitchen, dining room, living room, bedroom, bathroom, utility room and hallway with access to a heated garage and basement. In the center of the ground floor there is a staircase leading to the first floor with a large bedroom, a smaller bedroom and two other rooms, a changing room and access to a **terrace overlooking the river**. Above this floor there is a loft that presents the possibility of conversion. The house is surrounded by a large garden with a **garden house** suitable for a reconstruction and other use, beside there is a well with a pump. The villa has a central heating (boiler Junkers) and is connected to a pressure sewer system.

The house is located on a quiet street near the post office, kindergarten and elementary school. Convenient connections to Prague, both by car and public transport (bus and train station nearby).

Interior 175 m², terrace 15 m², garden 1,027 m². Land 1,139 m², building area 12 m².

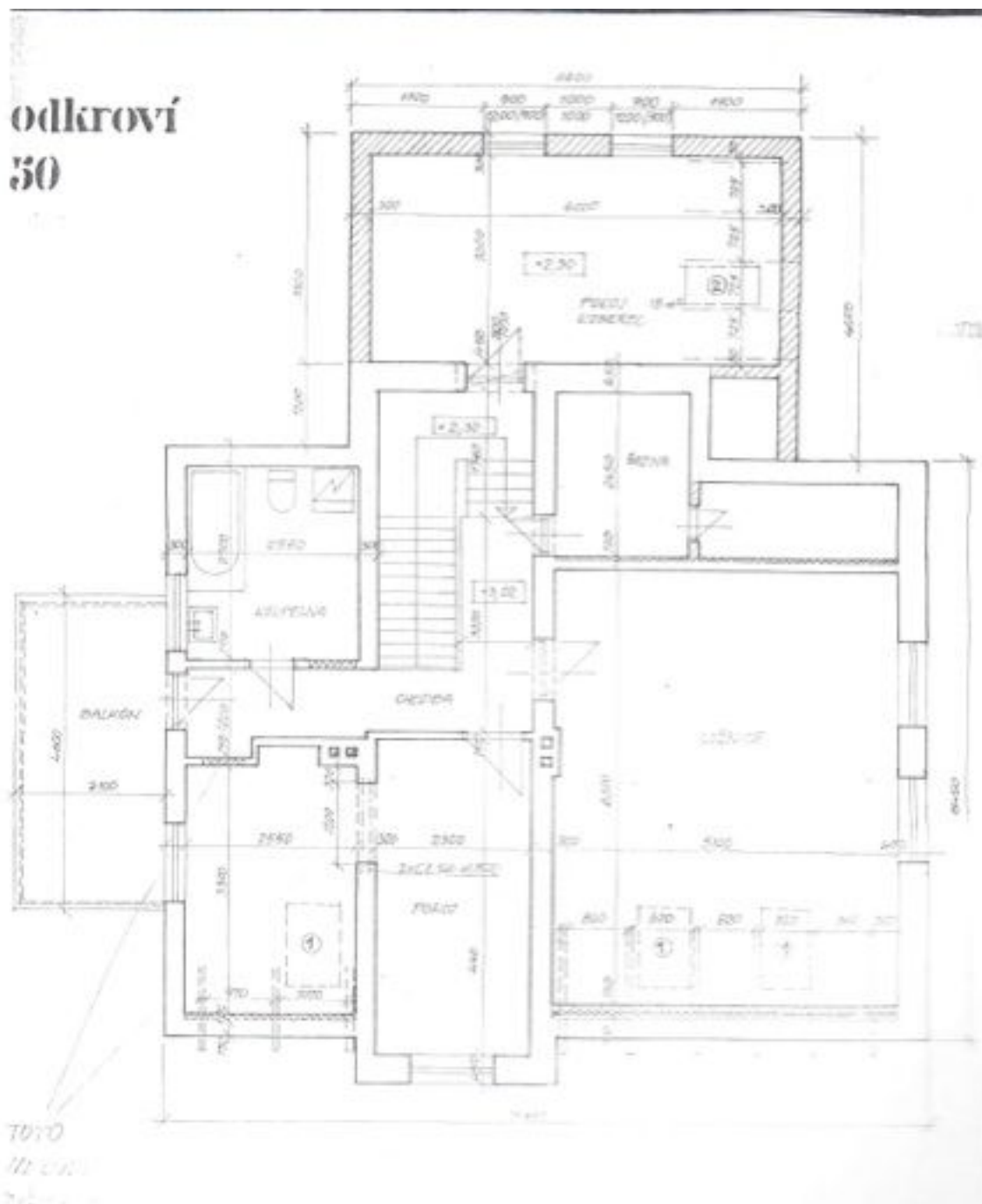




House Six-bedroom (7+1)

Sold

190 m², Praha-východ, Řež, U Radnice





House Six-bedroom (7+1)

190 m², Praha-východ, Řež, U Radnice

Sold

