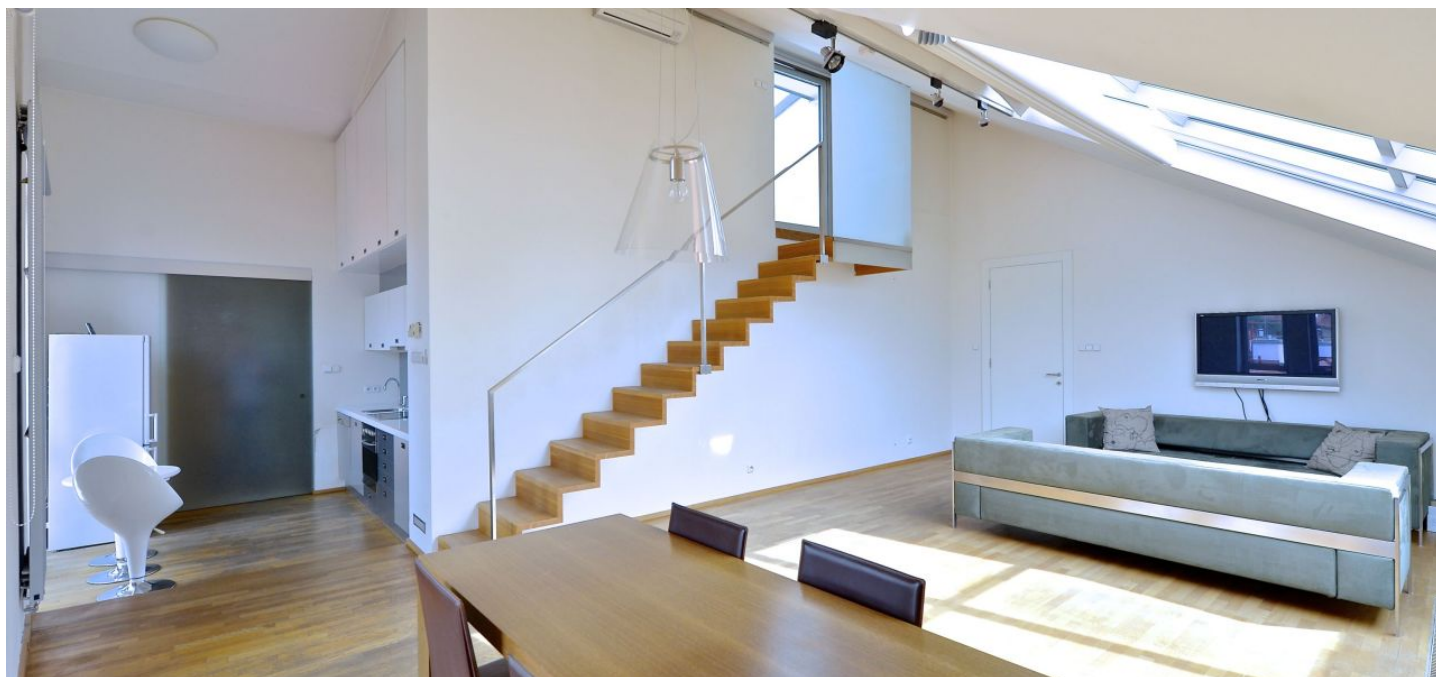




Apartment One-bedroom (2+kk)

Rented

102 m², Prague 1, Staré Město, Haštalská





Apartment One-bedroom (2+kk)

Rented

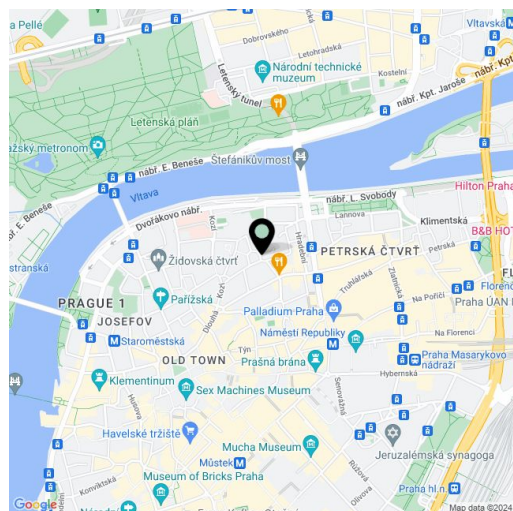
102 m², Prague 1, Staré Město, Haštalská

Total area	110 m ²
Floor area*	102 m ²
Terrace	8 m ²
Parking	Parking in blue zone.
Cellar	Yes
Service price	Common building charges and deposit for utilities CZK 5,800/month.
PENB	G
Reference number	18557
Available from	Immediately

Designer, partly furnished bright attic apartment on the 4th floor of a renovated historic building without an elevator in the very center of Prague, in a prestigious historic location close to the Vltava embankment, Old Town Square, and luxurious Pařížská Street, with full amenities nearby and within walking distance of the Náměstí Republiky and Staroměstská metro stations.

The apartment has a bright spacious living room with a fully fitted kitchen, 1 bedroom, a walk-in closet, a bathroom with a shower, bidet, and sink, a separate toilet, and an entry hall. Access to the terrace from the living room via the staircase.

Built-in wardrobes, air-conditioning, satellite, TV, alarm, washer, dishwasher.



* Size of the unit according to the Housing Act.

The area consists of the sum total of the internal area of every room.