



House Five-bedroom (6+1)

Sold

230 m², Prague 5, Slivenec, Opálová





House Five-bedroom (6+1)

Sold230 m², Prague 5, Slivenec, Opálová

| | |
|------------------|----------------------|
| Plot | 1 205 m ² |
| Foot print | 187 m ² |
| Garden | 1 018 m ² |
| Parking | Yes |
| Garage | Yes |
| Cellar | Yes |
| PENB | C |
| Reference number | 18576 |

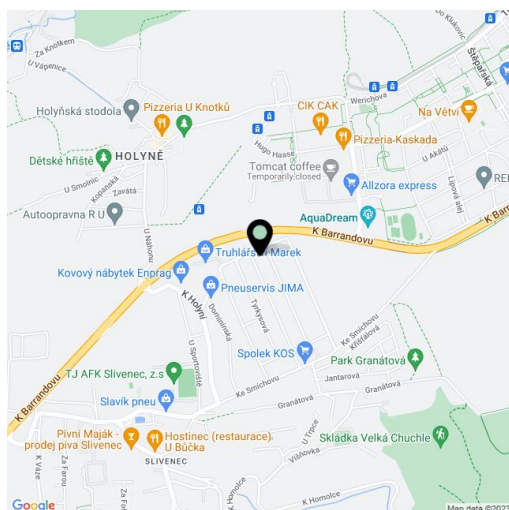
Bright and cozy house after a complete renovation approved in 2004 as a new building, with a balcony and large garden with mature trees, located in an old part of Slivenec, a green residential area with good access to the city center.

The layout of the house offers a living room and dining room with **fireplace** and fully equipped kitchenette from which we can access the garden and paved patio with a **brick barbecue**, 3 spacious bedrooms, 2 bathrooms (both with bathtubs, one also with a shower), 1 separate toilet and entrance hall. A garage completes the space.

Nicely maintained garden with mature pine and fruit trees and hedgerows providing adequate privacy. The house has concrete roof tiles, wooden floors in the living areas, tiles in the kitchen, bathroom, hall and terrace, large plastic Vekra windows, **fireplace in the dining room and in the attic.**

The house is located on a newly renovated one-way street, the location offers good access to the city center (10-15 minutes by car) and plenty of sports activities - Slivenec tennis courts or AquaDream Barrandov right around the corner.

Interior 240 m², built-up area 187 m², garden 1018 m², plot 1205 m².

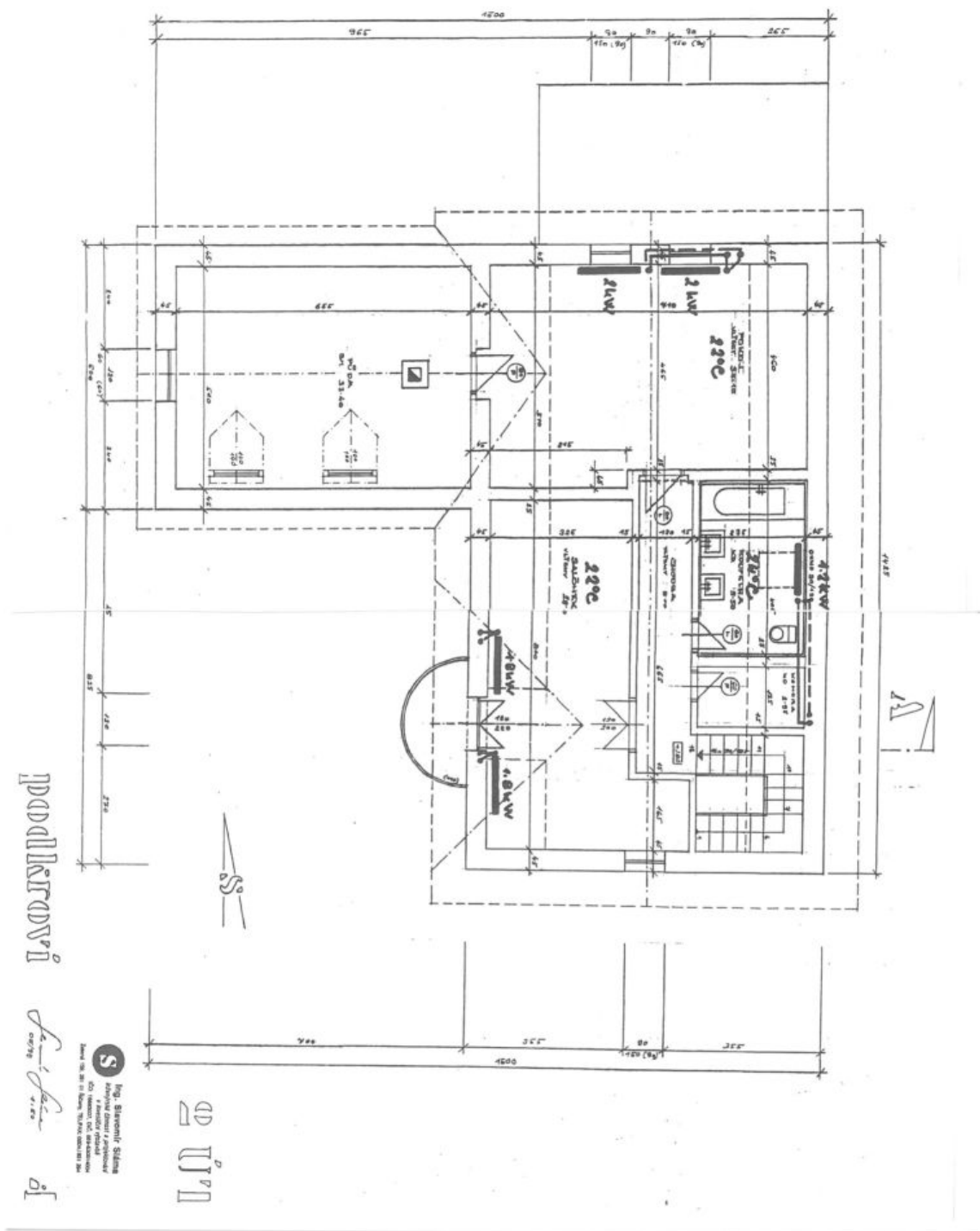




House Five-bedroom (6+1)

230 m², Prague 5, Slivenec, Opálová

Sold





House Five-bedroom (6+1)

230 m², Prague 5, Slivenec, Opálová

Sold

