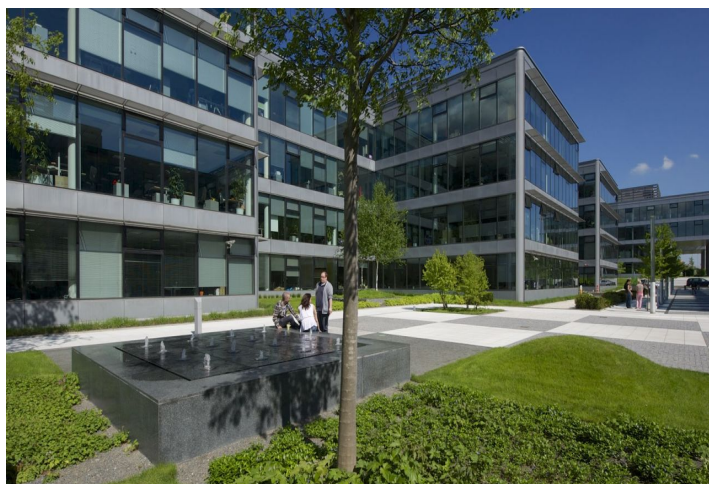




**Office space**

Prague 4, Chodov, V parku

€ 15.20 - 15.75 / m<sup>2</sup> | CZK 384 - 398 / m<sup>2</sup>



**Office space**

Prague 4, Chodov, V parku

**€ 15.20 - 15.75 / m<sup>2</sup> | CZK 384 - 398 / m<sup>2</sup>**

<b>Service price</b>	159 CZK monthly per m <sup>2</sup>
<b>Available area</b>	1 047 m <sup>2</sup>
<b>Cellar</b>	-
<b>Parking</b>	EUR 110 / ps / month
<b>PENB</b>	G
<b>Reference number</b>	18611

Campus-style office community business park. The site includes 12 state-of-the-art superior-standard buildings. The buildings are situated in a landscaped garden that consists of carefully selected trees, plants, and grasses and a network of streams, fountains, and pools. Atrium gardens and vestibules connect each building with the outside garden and create a unique office environment.

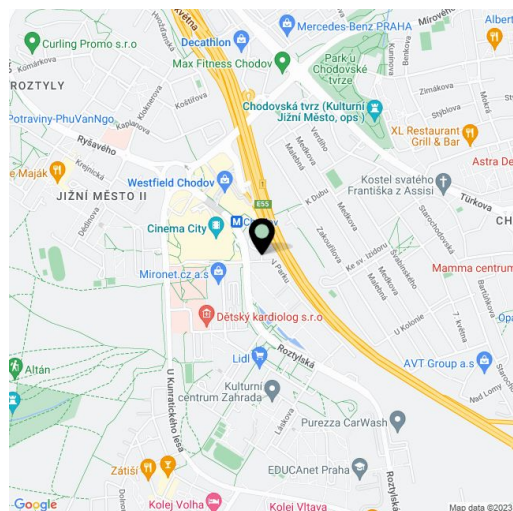
**Location:**

The project is situated in Prague 4—the Czech capital's fastest growing big business and retail destination—adjacent to the Prague-Budapest-Vienna highway and 50 m from the Chodov metro station (line C) and transportation hub. The site is also located next to one of Prague's most ambitious retail-entertainment projects: the Chodov shopping center that forms an integral part of this vibrant new city quarter.

**Features and Services:**

- High-speed broadband fiber optic connections
- Shared lobby with a reception
- 24/7 access
- High-speed and service
- Elevators
- Secured networks
- Air conditioning
- Raised floors
- Lighting

Rental and service charges listed without VAT. Lessee pays no commission.

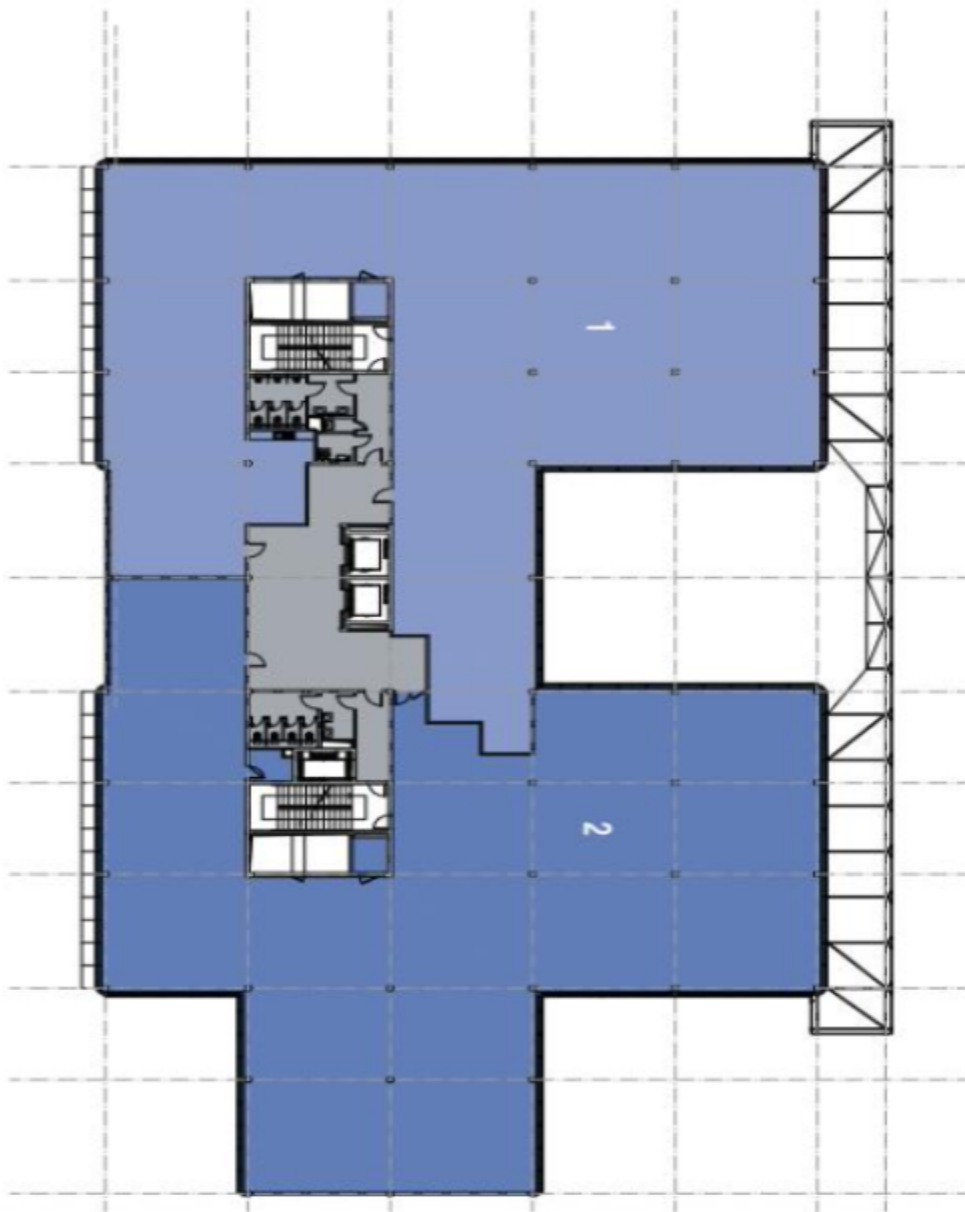




# Office space

Prague 4, Chodov, V parku

€ 15.20 - 15.75 / m<sup>2</sup> | CZK 384 - 398 / m<sup>2</sup>



<b>Building 08</b>	
2nd Floor (3NP)	
Unit	Size
2	1 047 m <sup>2</sup>