



Apartment One-bedroom (2+1)

116 m², Prague 2, Vinohrady, Slezská

Sold





Apartment One-bedroom (2+1)

Sold116 m², Prague 2, Vinohrady, Slezská

Total area	142 m ²
Floor area*	116 m ²
Terrace	26 m ²
Parking	-
Cellar	-
PENB	G
Reference number	18638

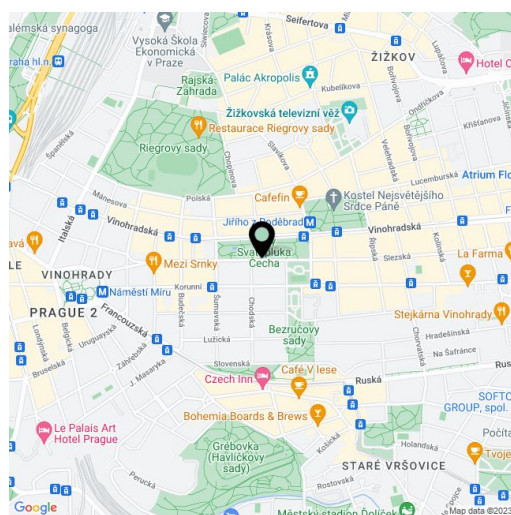
Spacious and bright split-level apartment with terrace, on the 6th and 7th floors of a newly reconstructed building overlooking a park in Vinohrady, close to Rieger and Bezručovy gardens.

The first level of the maisonette consists of an entrance hall with a closet, living room, large bedroom with balcony, bathroom with shower (Hansgrohe taps) and a separate toilet. From the living room with a large skylight and a wooden staircase we can access the open space of the gallery, kitchen and dining room on the second floor which leads to the **21,6 m² terrace** with views of the city. There are also 2 chambers and a bathroom with a toilet and wash basin.

The apartment was renovated using high quality and above-standard materials - flooring and stairs bleached oak, ash on the terrace, walnut facing on the second floor, tiles in the bathroom.

Attractive and desired location with excellent access to public transport (Jiřího z Poděbrad tram/metro line A station around the corner) and full amenities. Kindergarten, elementary and secondary schools, shops, restaurants and a swimming pool nearby.

Interior 116 m², terrace 26,1 m².



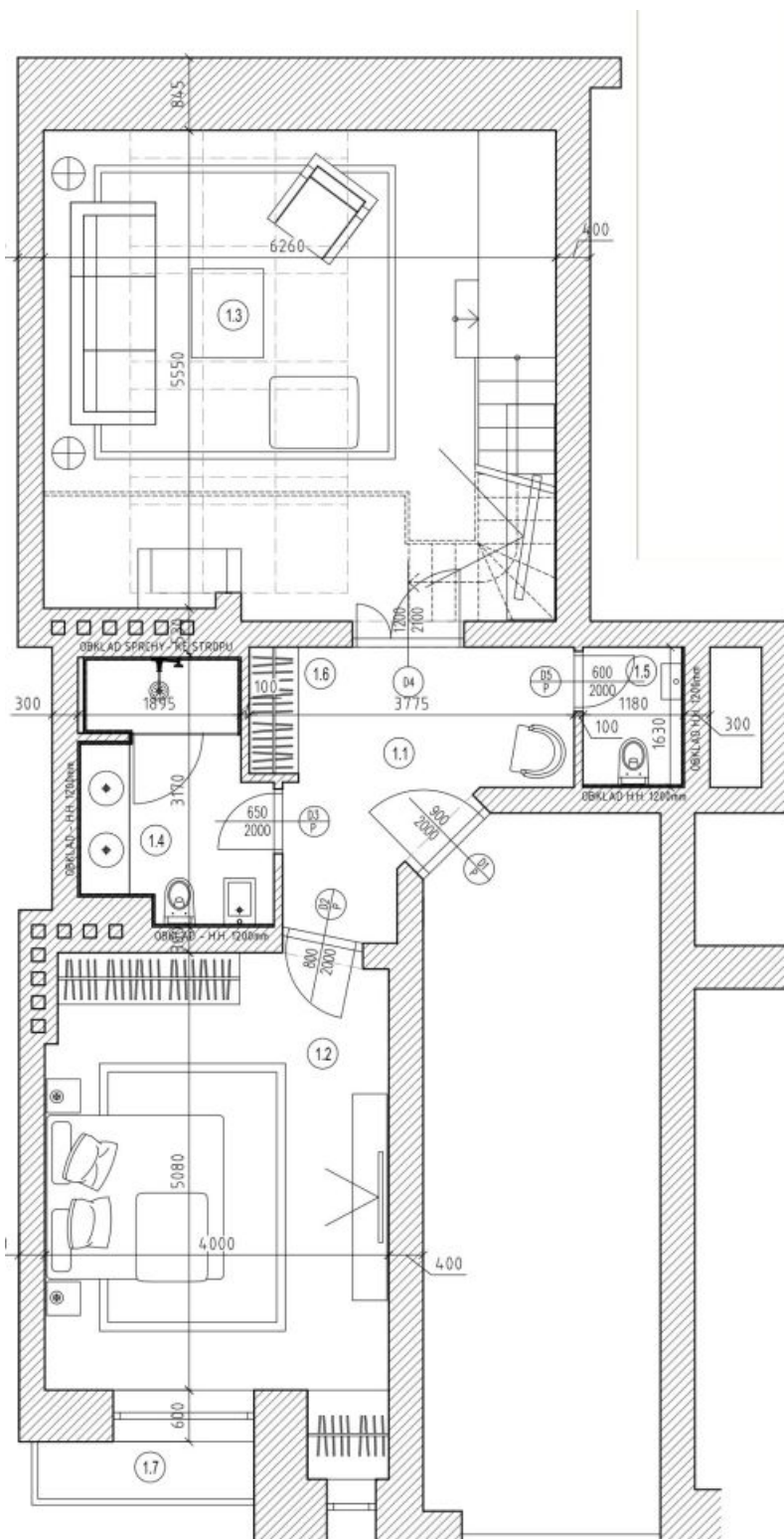
* Area of the unit according to the Civil Code. The area consists of the sum total area of the entire unit bounded by perimeter walls.



Apartment One-bedroom (2+1)

Sold

116 m², Prague 2, Vinohrady, Slezská





Apartment One-bedroom (2+1)

Sold

116 m², Prague 2, Vinohrady, Slezská

